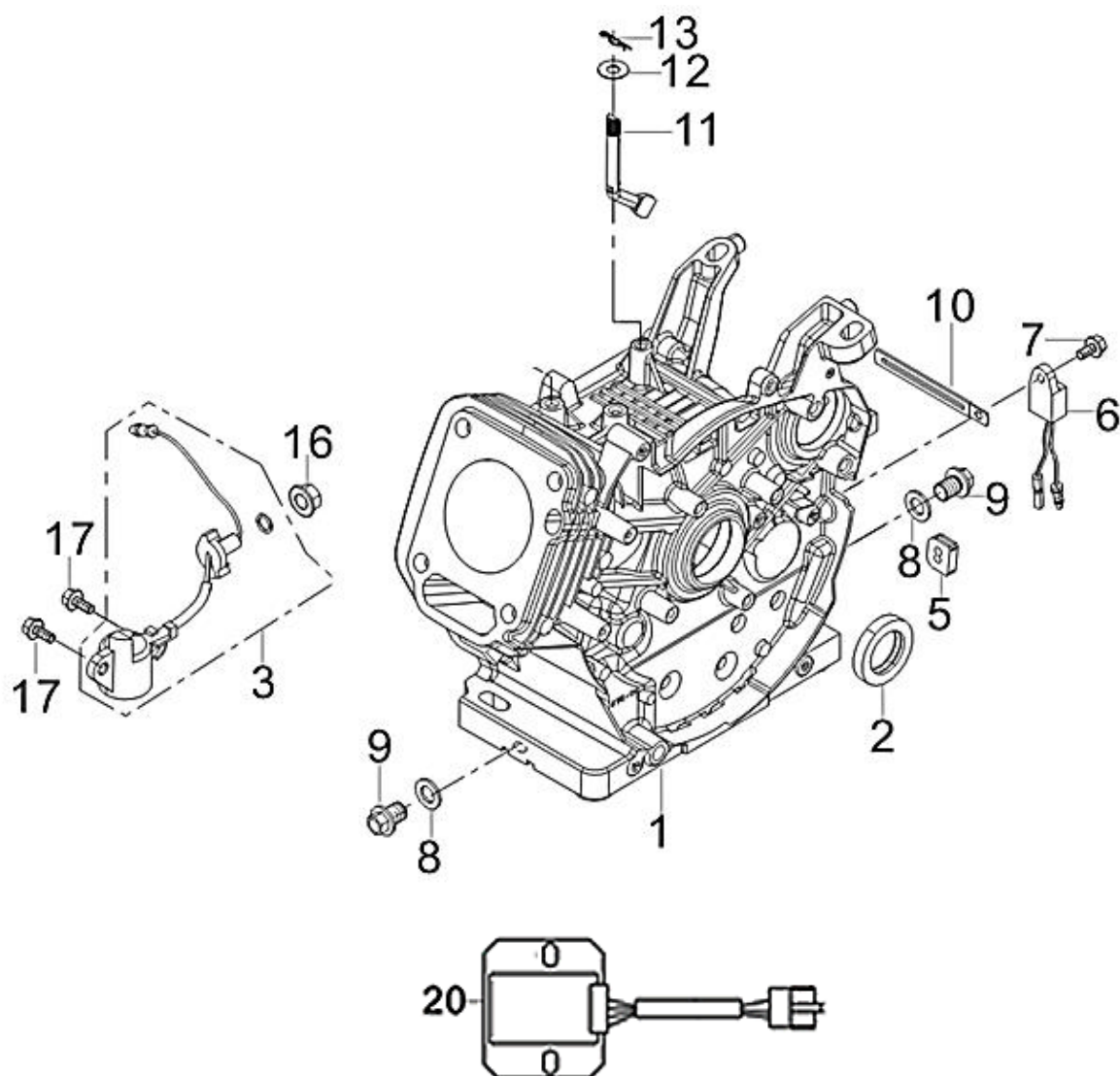


# SCHEMA EXPLODATA ROTAKT RO13R

FIG.1 CRANKCASE / GEAR ASSY, GOVERNOR. (E01)



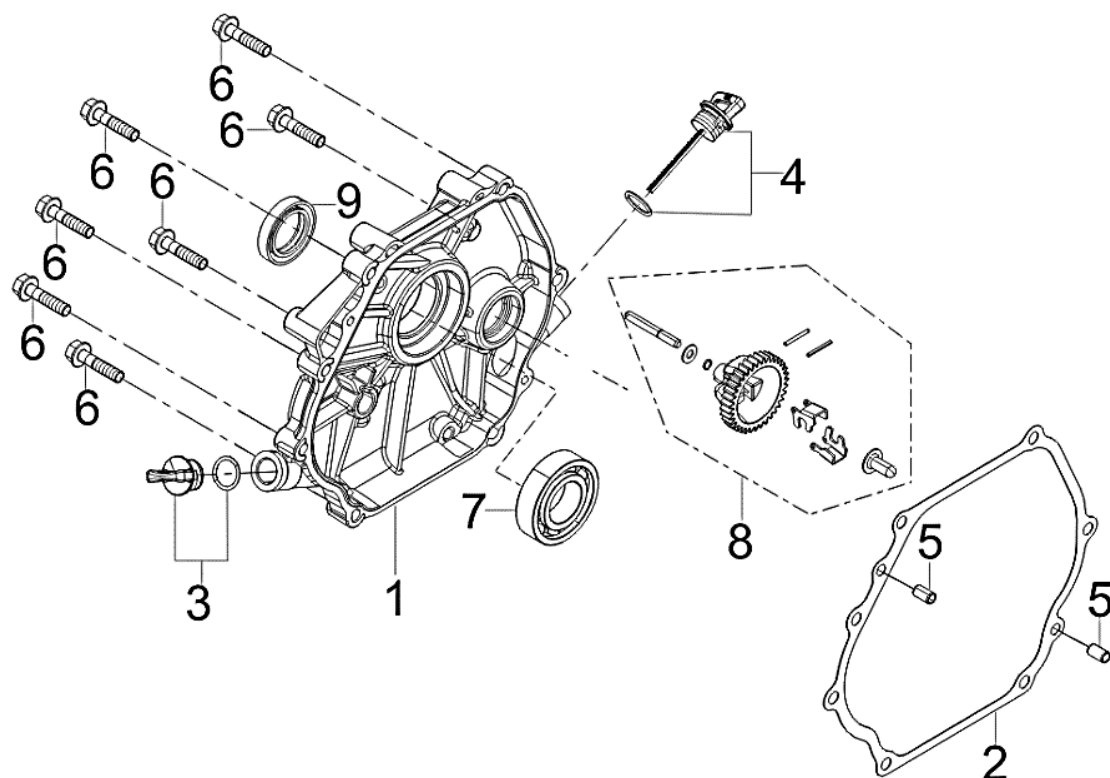
Cod ROTAKT	REF. NO.	PART NO	DESCRIPTION
033933	E01-1	11310-Z730110-0BA0	CRANKCASE SUBASSEMBLY.
033934	E01-2	90682-Z080110-00A0	SEAL, OIL
	E01-3	37060-Z080120-00A0	SENSOR, ENGINE OIL
	E01-5	28101-Z080110-00A0	PLUG, RUBBER
	E01-6	37050-Z010210-00A0	PROTECTOR, OIL
	E01-7	90001-0612-01A0	BOLT
	E01-8	90412-Z080110-00A0	WASHER, FLAT
	E01-9	11007-Z080110-00A0	BOLT, DRAIN PLUG
	E01-10	90684-Z010310-00A0	CLIP
	E01-11	16061-Z080110-00A0	ARM, GOVERNOR
	E01-12	90412-Z080210-00A0	WASHER, FLAT
	E01-13	90501-Z010110-00A0	PIN
	E01-16	90305-Z010210-01A0	NUT
	E01-17	90001-0616-01A0	BOLT

SCHEMA EXPLODATA ROTAKT RO13R

Cod ROTAKT	REF. NO.	PART NO	DESCRIPTION
033935	E01-20	30060-Z190310-00A0	REGULATOR, VOLTAGE

# SCHEMA EXPLODATA ROTAKT RO13R

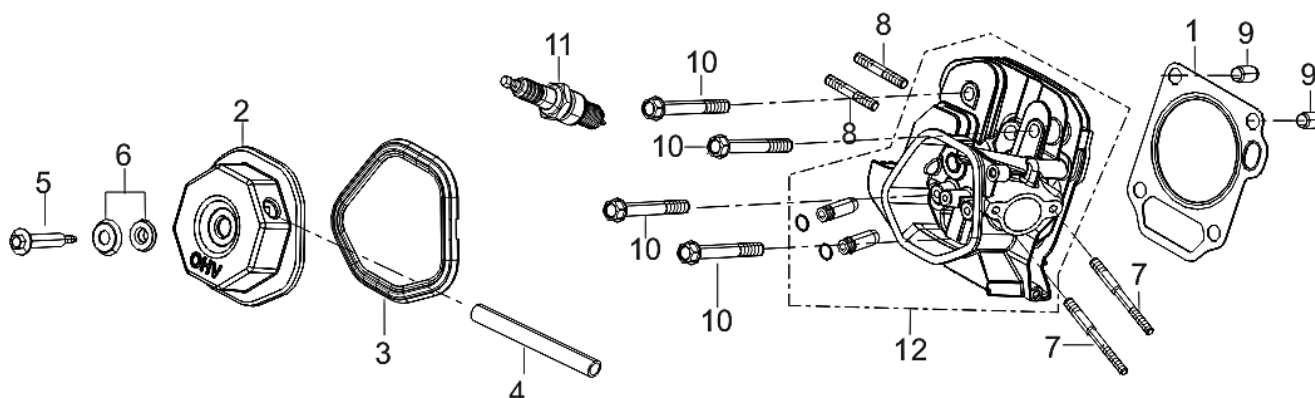
FIG.2 COVER SUBASSEMBLY, CRANKCASE (E02)



Cod ROTAKT	REF.NO.	PART NO	DESCRIPTION
<b>033936</b>	E02-1	11411-Z580410-0BA0	COVER, CRANKCASE
<b>033937</b>	E02-2	11001-Z580120-00A0	GASKET, CRANKCASE
	E02-3	15030-Z080130-Q5A0	PLUG SUBASSEMBLY, ENGINE OIL
	E02-4	15010-Z080130-Q5A0	DIPSTICK SUBASSEMBLY, OIL
	E02-5	90502-0912-00A0	PIN
	E02-6	90001-0835-01A0	BOLT
	E02-7	90547-0206-00A0	BEARING, DEEP GROOVE BALL
<b>033938</b>	E02-8	16400-Z080110-00A0	GEAR ASSY, GOVERNOR
	E02-9	90682-Z080110-00A0	SEAL, OIL

# SCHEMA EXPLODATA ROTAKT RO13R

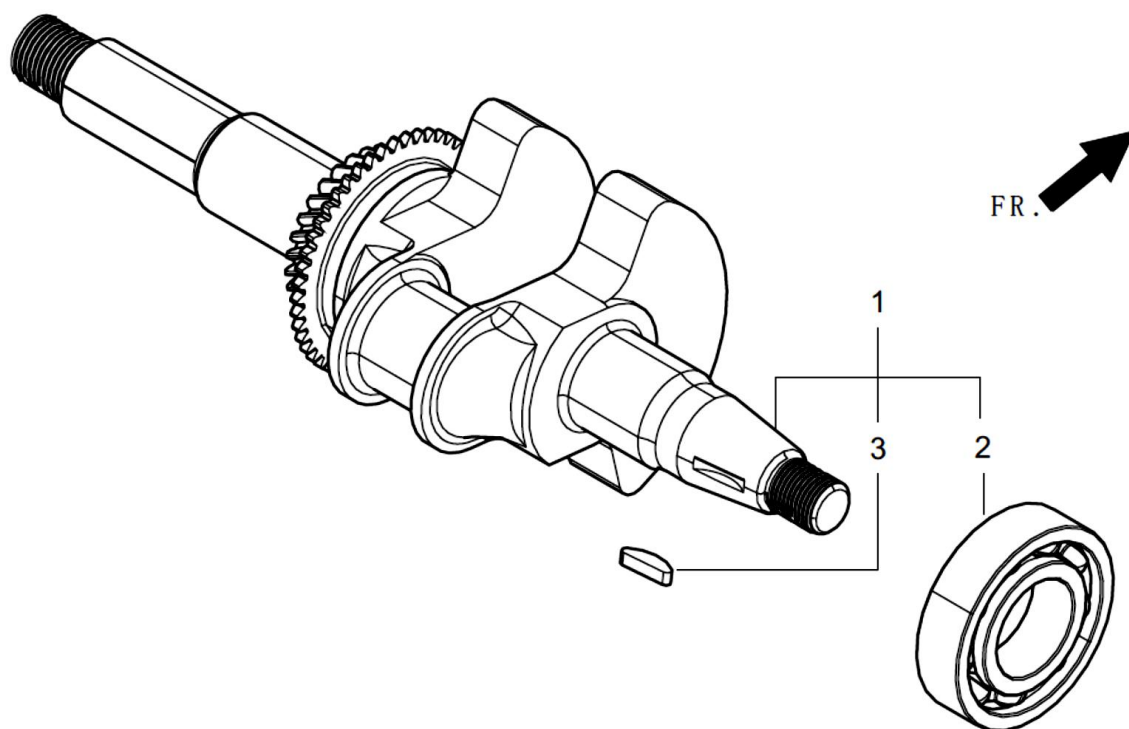
FIG.3 HEAD SUBASSEMBLY, CYLINDER / PLUG, SPARK (E03)



Cod ROTAKT	REF.NO.	PART NO	DESCRIPTION
<b>033939</b>	E03-1	12131-Z730210-00A0	GASKET, CYLINDER HEAD
<b>033940</b>	E03-2	12410-Z580110-01A9	COVER SUBASSEMBLY, CYLINDER HEAD
<b>033941</b>	E03-3	12004-Z580110-00A9	GASKET, CYLINDER HEAD COVER
<b>033942</b>	E03-4	17004-Z730110-00A0	TUBE, BREATHER
	E03-5	12032-Z080110-01A0	BOLT, CYLINDER HEAD
	E03-6	12034-Z080110-00A9	Cylinder epicranium bolt seal&gasket unit
	E03-7	90204-Z080320-00A0	STUD
	E03-8	90204-Z100320-00A0	STUD
	E03-9	90502-1220-00A0	PIN
	E03-10	12003-Z080110-00A0	BOLT, CYLINDER HEAD
	E03-11	30010-Z010110-00A0	PLUG, SPARK
<b>033943</b>	E03-12	12140-Z730210-0BA9	HEAD SUBASSEMBLY, CYLINDER

# SCHEMA EXPLODATA ROTAKT RO13R

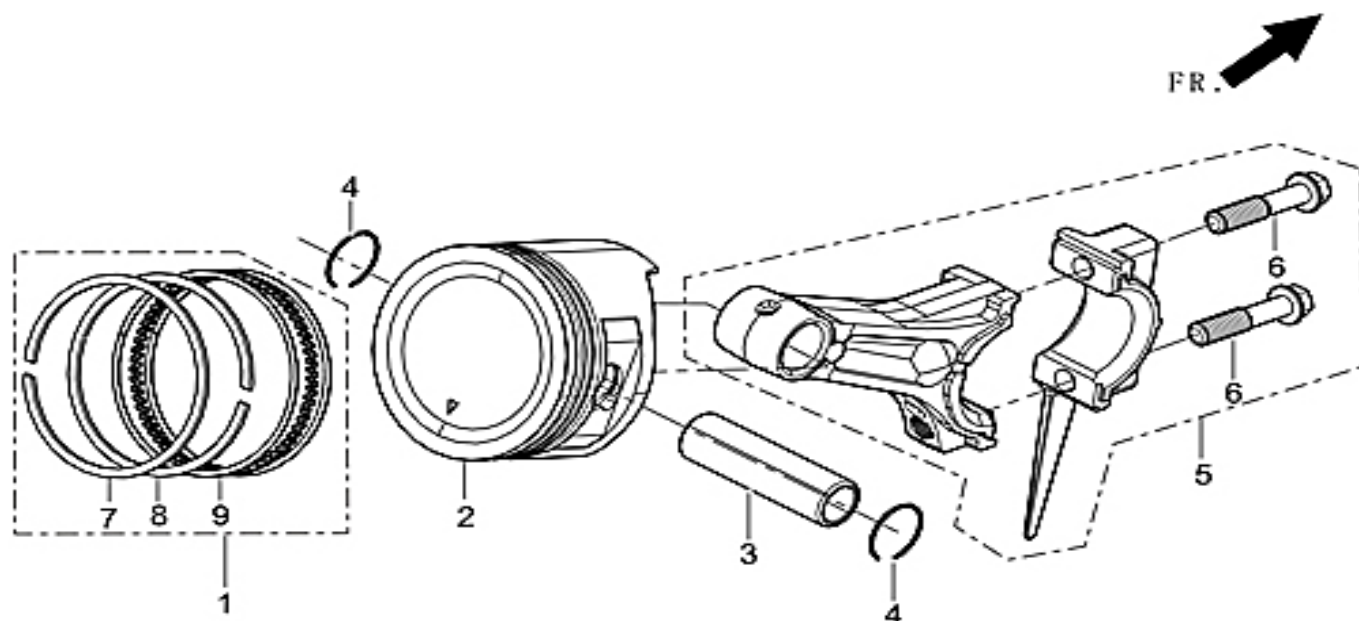
FIG.4 ROD, CRANKSHAFT CONNETING (E04)



Cod ROTAKT	REF.NO.	PART NO	DESCRIPTION
033944	E04-1	13300-Z732510-00A0	CRANKSHAFT ASSY.

# SCHEMA EXPLODATA ROTAKT RO13R

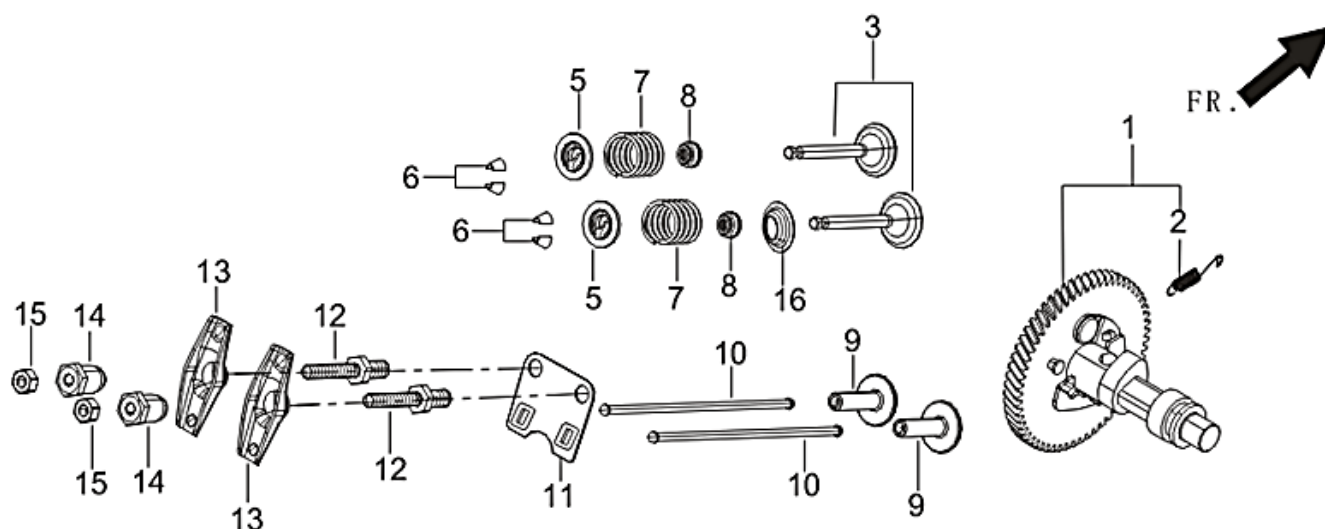
FIG.5 RING SET, OIL / ROD, CRANKSHAFT CONNETING (E05)



Cod ROTAKT	REF.NO.	PART NO	DESCRIPTION
033945	E05-1	13200-Z730110-00A9	RING ASSY, PISTON
033946	E05-2	13111-Z730120-00A9	PISTON
033947	E05-3	13121-Z730110-00A0	PIN, PISTON
033948	E05-4	13122-Z730110-00A9	CLIP, PISTON PIN
033949	E05-5	13010-Z730120-00A9	ROD, CONNECTING

# SCHEMA EXPLODATA ROTAKT RO13R

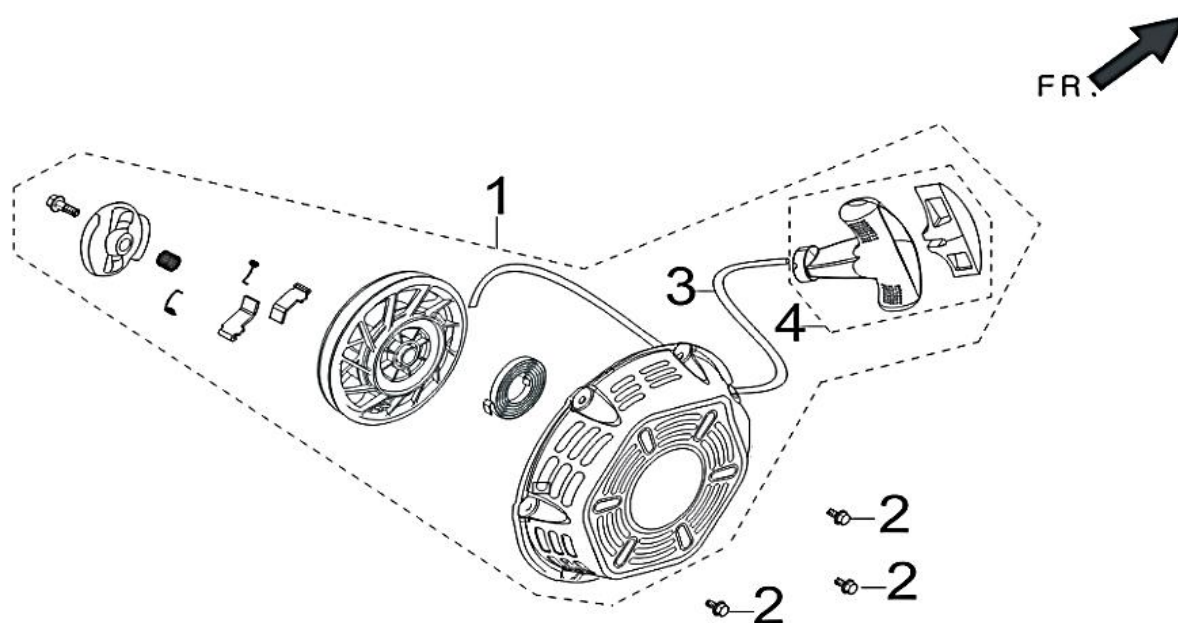
FIG.6 TRAIN, VALVE / CAMSHAFT SUBASSEMBLY (E06)



Cod ROTAKT	REF.NO.	PART NO	DESCRIPTION
<b>033950</b>	E06-1	14200-Z730120-00A9	CAMSHAFT ASSY.
	E06-3	12110-Z730110-00A9	VALVES SET
<b>033951</b>	E06-5	12112-Z730110-00A0	SEAT, VALVE SPRING
<b>033952</b>	E06-6	12109-Z730110-00A0	CLAMP, VALVE LOCK
<b>033953</b>	E06-7	12103-Z730110-00A9	SPRING, VALVE
<b>033954</b>	E06-8	12101-Z020110-00A0	GUIDE, SEAL
<b>033955</b>	E06-9	14081-Z580110-00A0	TAPPET, VALVE
<b>033956</b>	E06-10	14070-Z730110-00A0	LIFTER, VALVE
<b>033957</b>	E06-11	14090-Z080110-00A0	PLATE SUBASSEMBLY, LIFTER STOPPER
<b>033958</b>	E06-12	14313-Z010110-00A0	BOLT, ROCKER SHAFT
<b>029976</b>	E06-13	14311-Z080110-00A0	ROCKER, VALVE
<b>033850</b>	E06-14	14314-Z010110-00A0	NUT, VALVE ADJUSTING
<b>033851</b>	E06-15	14312-Z010110-00A0	NUT, VALVE LOCK
<b>033959</b>	E06-16	12105-Z080110-00A0	RETAINER, VALVE SPRING

# SCHEMA EXPLODATA ROTAKT RO13R

FIG.7 STARTER, RECOIL (E07)

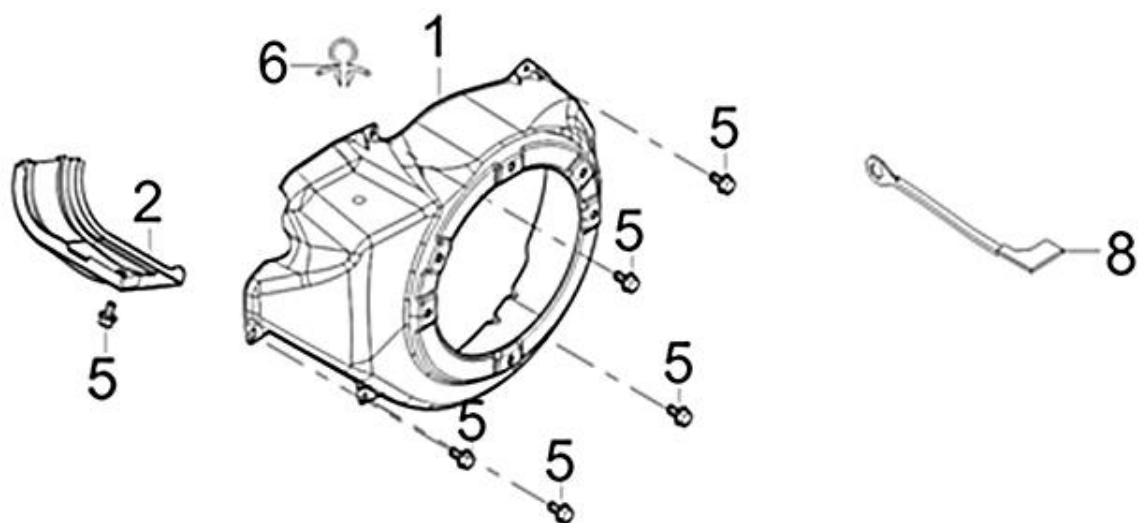


Cod ROTAKT	REF.NO.	PART NO	DESCRIPTION
033960	E07-1	28200-Z081210-RT00	STARTER ASSY, RECOIL
	E07-2	90001-0608-01	BOLT



# SCHEMA EXPLODATA ROTAKT RO13R

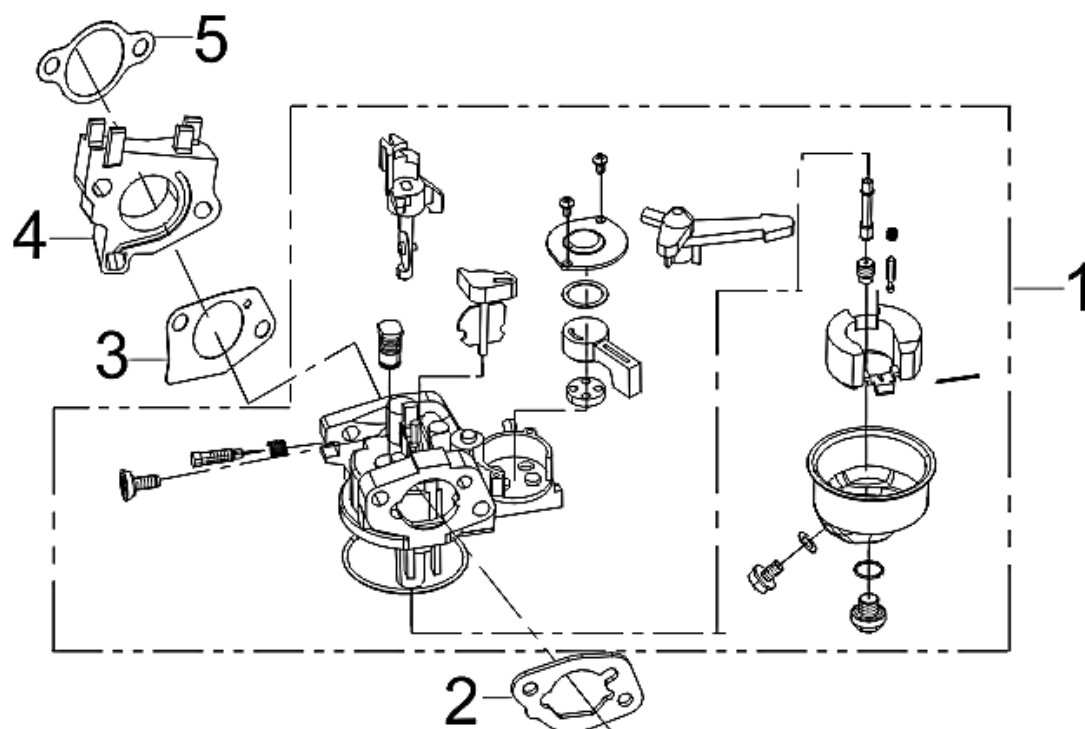
FIG.8 SHROUD / SHIELD, LOWER (E08)



Cod ROTAKT	REF.NO.	PART NO	DESCRIPTION
<b>033961</b>	E08-1	28110-Z080410-RT00	SHROUD
	E08-2	19304-Z080110-00A0	SHROUD, CYLINDER BODY
	E08-5	90001-0612-01A0	BOLT
	E08-6	90684-Z080110-00A0	CLIP
	E08-8	35555-Z010410-00A0	WIRE, STOP ENGINE SWITCH GROUNDING

# SCHEMA EXPLODATA ROTAKT RO13R

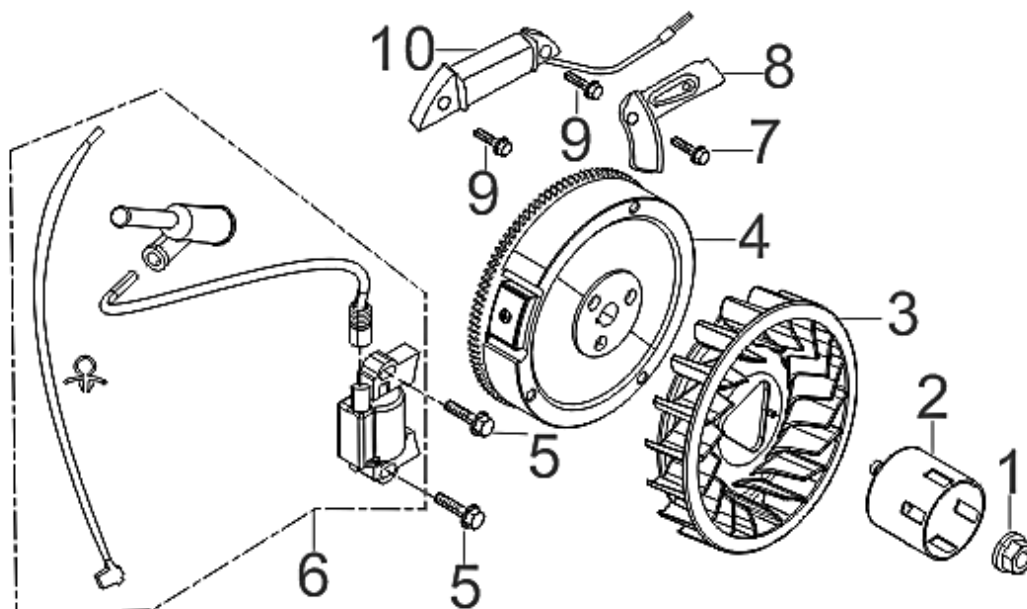
FIG.9 CARBURETOR ASSY. (E09)



Cod ROTAKT	REF.NO.	PART NO	DESCRIPTION
<b>033962</b>	E09-1	16100-Z730310-00A9	CARBURETOR ASSY.
<b>033963</b>	E09-2	17001-Z080210-00A0	GASKET, AIR CLEANER
<b>033964</b>	E09-3	16001-Z080110-00A0	GASKET, CARBURETOR
<b>033965</b>	E09-4	16003-Z730110-00A0	PLATE, CARBURETOR INSULATOR
<b>033966</b>	E09-5	17002-Z080110-00A0	GASKET, INLET

# SCHEMA EXPLODATA ROTAKT RO13R

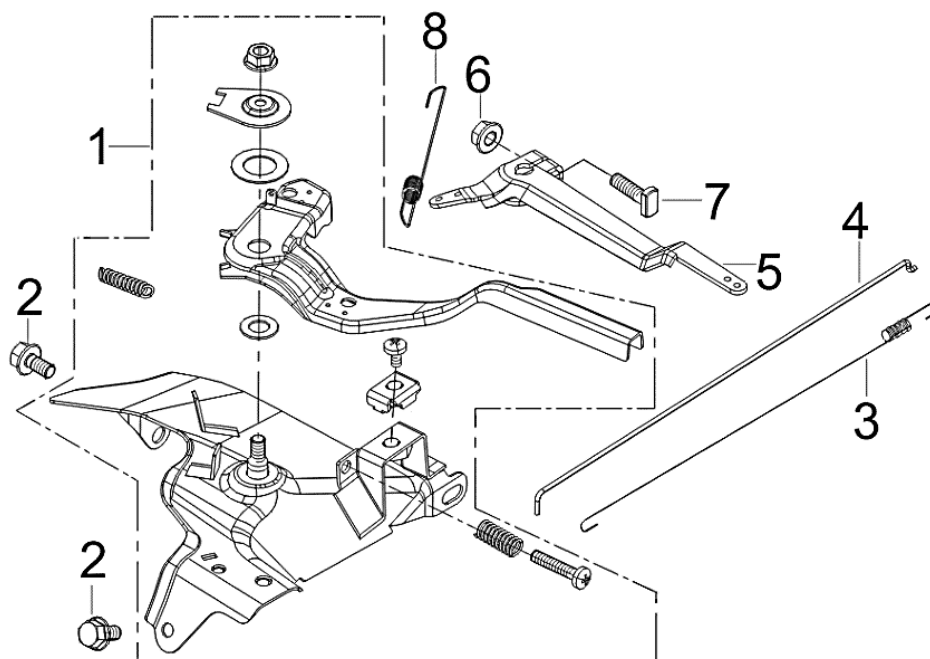
FIG.10 FLYWHEEL / IMPELLER / STARTER PULLEY / IGNITION COIL (E10)



Cod ROTAKT	REF.NO.	PART NO	DESCRIPTION
	E10-1	13501-Z080110-00A0	NUT, FLYWHEEL
<b>033979</b>	E10-2	28002-Z080310-00A0	PULLEY,STARTER
<b>033980</b>	E10-3	19352-Z080110-00A0	IMPELLER
<b>033981</b>	E10-4	13510-Z080410-00A0	FLYWHEEL SUBASSEMBLY
	E10-5	90001-0628-01A0	BOLT
	E10-6	30400-Z080910-00A0	COIL, IGNITION
	E10-7	90001-0610-01A0	BOLT
	E10-8	30001-Z160110-00A0	CLAMP, CHARGE COIL
	E10-9	90001-0628-01A0	BOLT
<b>033982</b>	E10-10	30140-Z160510-00A0	COIL SUBASSEMBLY, CHARGE

# SCHEMA EXPLODATA ROTAKT RO13R

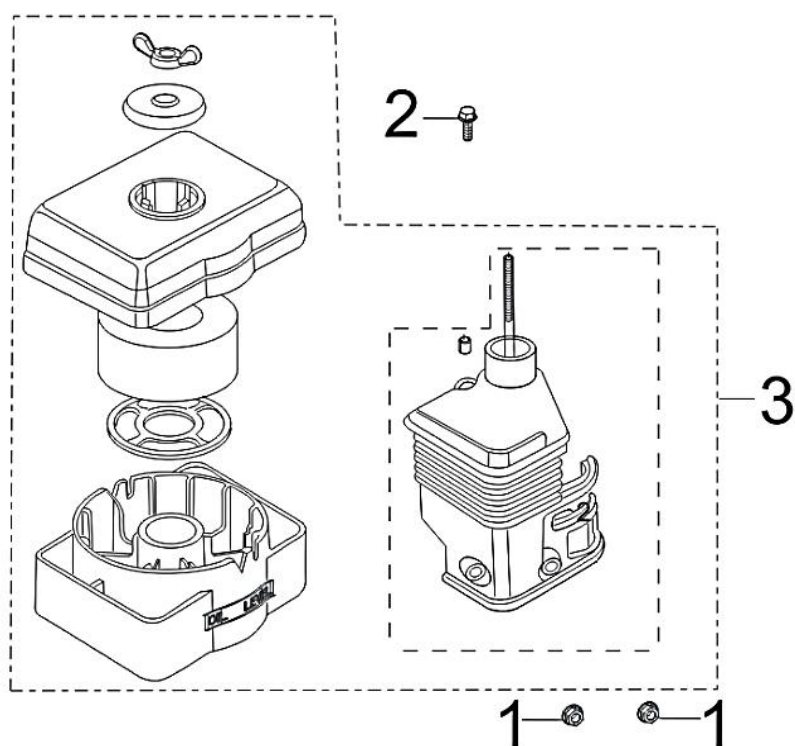
FIG.11 CONTROL ASSY, THROTTLE (E11)



Cod ROTAKT	REF.NO.	PART NO	DESCRIPTION
<b>033983</b>	E11-1	16520-Z080430-00A0	CONTROL ASSY, THROTTLE
<b>033984</b>	E11-2	90001-0612-01A0	BOLT
<b>029995</b>	E11-3	16012-Z080110-00A0	SPRING, THROTTLE VALVE RETURNING
	E11-4	16062-Z080110-00A0	ROD, GOVERNEOR
	E11-5	16070-Z080110-00A0	SUPPORT SUBASSEMBLY, GOVERNOR
	E11-6	90305-0600-31A0	NUT
	E11-7	16072-Z010110-00A0	BOLT, GOVERNOR SUPPORT
<b>033985</b>	E11-8	16063-Z080310-00A0	SPRING, GOVERNOR

# SCHEMA EXPLODATA ROTAKT RO13R

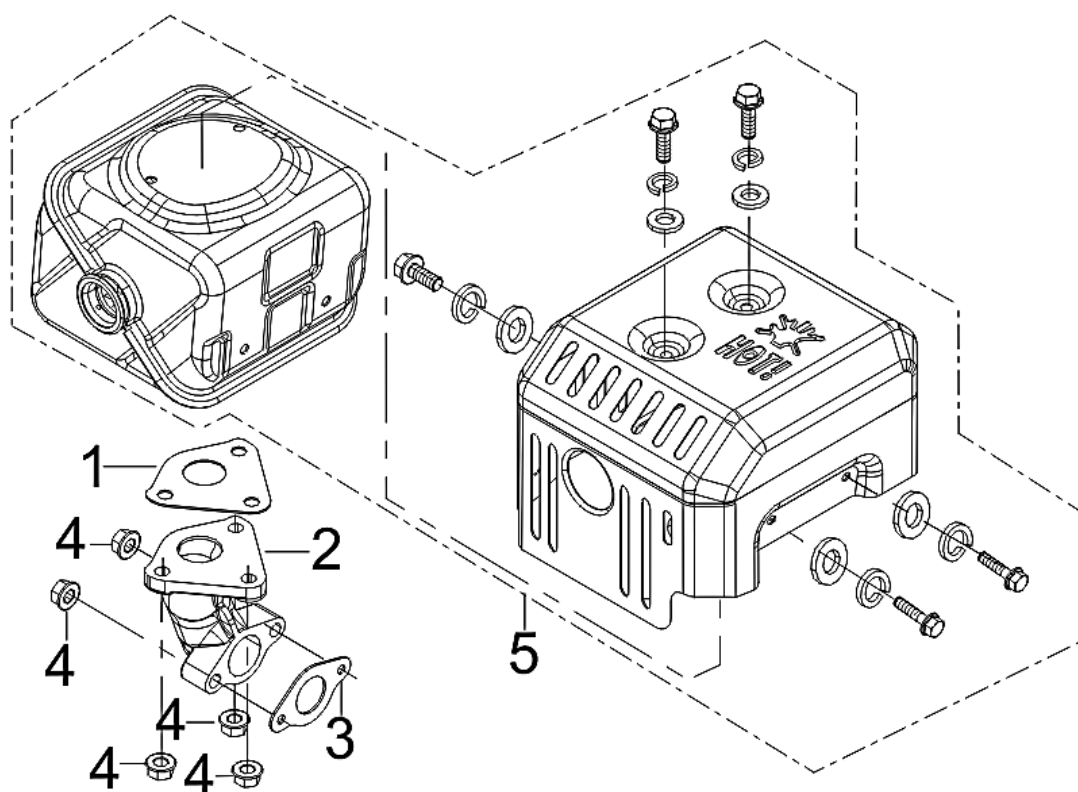
FIG.12 CLEANER, AIR (F01)



Cod ROTAKT	REF.NO.	PART NO	DESCRIPTION
	F02-1	90305-0600-31A0	NUT
	F02-2	90007-0620-A1A0	BOLT
<b>033986</b>	F02-3	17100-Z580310-00A0	CLEANER, AIR

# SCHEMA EXPLODATA ROTAKT RO13R

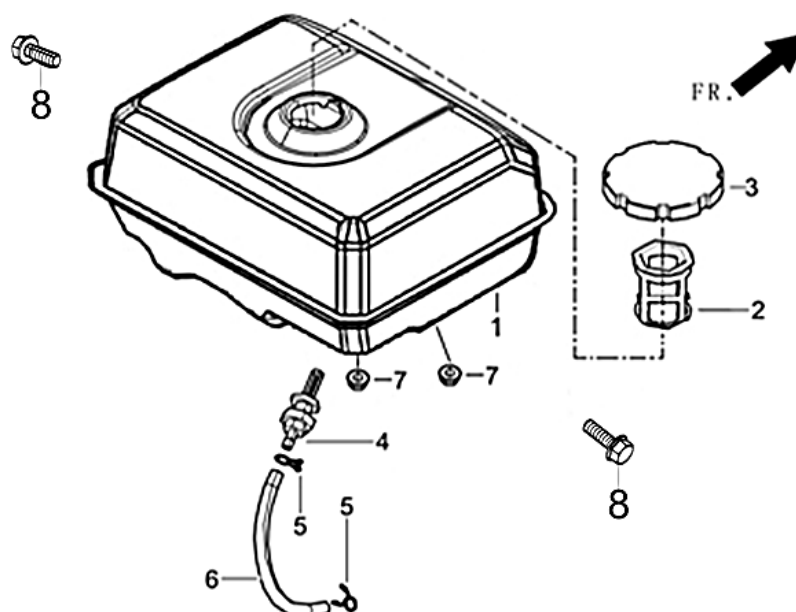
FIG.13 MUFFLER ASSY. (F02)



Cod ROTAKT	REF.NO.	PART NO	DESCRIPTION
033987	F02-1	18101-Z080110-00A0	GASKET, MUFFLER
033988	F02-2	18150-Z080210-00A0	PIPE, EXHAUST
030000	F02-3	18001-Z080110-00A0	GASKET, EXHAUST OUTLET
	F02-4	90305-0800-31A0	NUT
033989	F02-5	18100-Z080710-00A0	MUFFLER ASSY.

# SCHEMA EXPLODATA ROTAKT RO13R

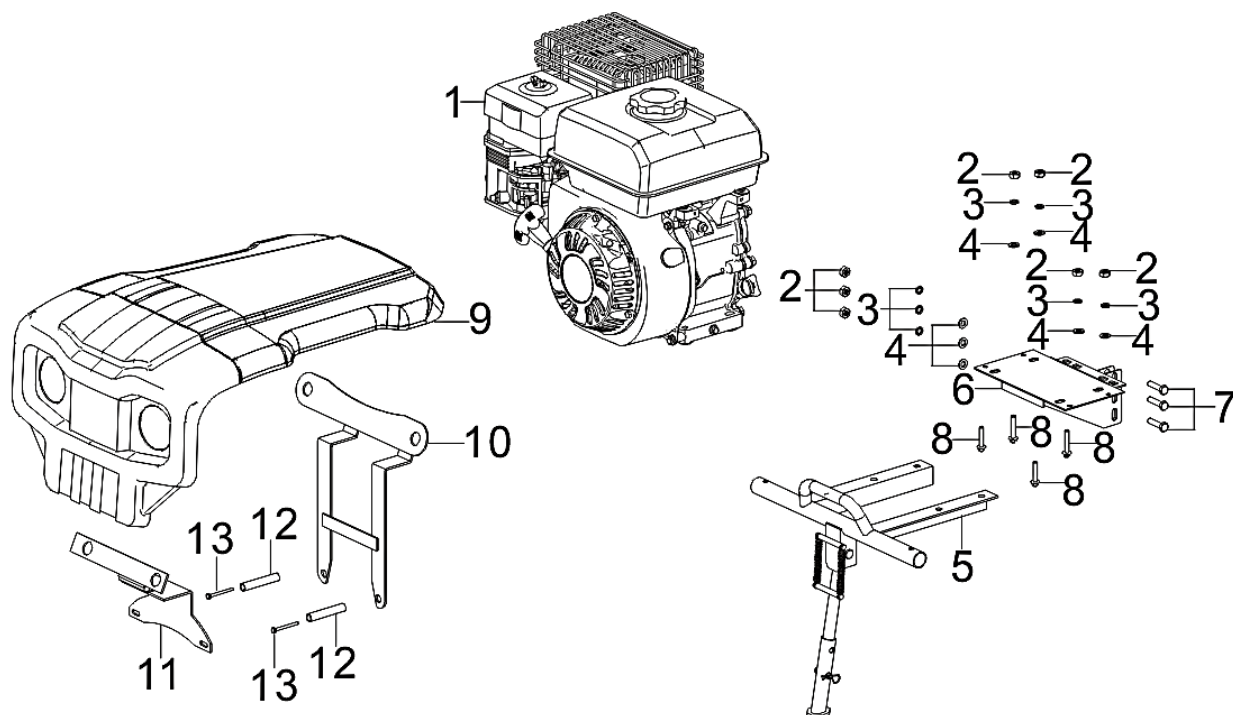
FIG.14 TANK ASSY, FUEL (F03)



Cod ROTAKT	REF.NO.	PART NO	DESCRIPTION
<b>033990</b>	F03-1	16620-Z080410-H3AP	TANK, FUEL
<b>033868</b>	F03-2	16652-Z010610-00A0	STRAINER, FUEL
<b>033869</b>	F03-3	16730-Z010820-QBA0	COVER, FUEL TANK
	F03-4	16680-Z010110-00A0	OUTLET SUBASSEMBLY, FUEL TANK OIL
	F03-5	90740-Z010210-00A0	COLLAR
<b>033992</b>	F03-6	90686-Z080310-00A0	TUBE, FUEL
	F03-7	90305-0800-31A0	NUT
	F03-8	90001-0820-01A0	BOLT

# SCHEMA EXPLODATA ROTAKT RO13R

FIG.15 Engine fixed part (W01)

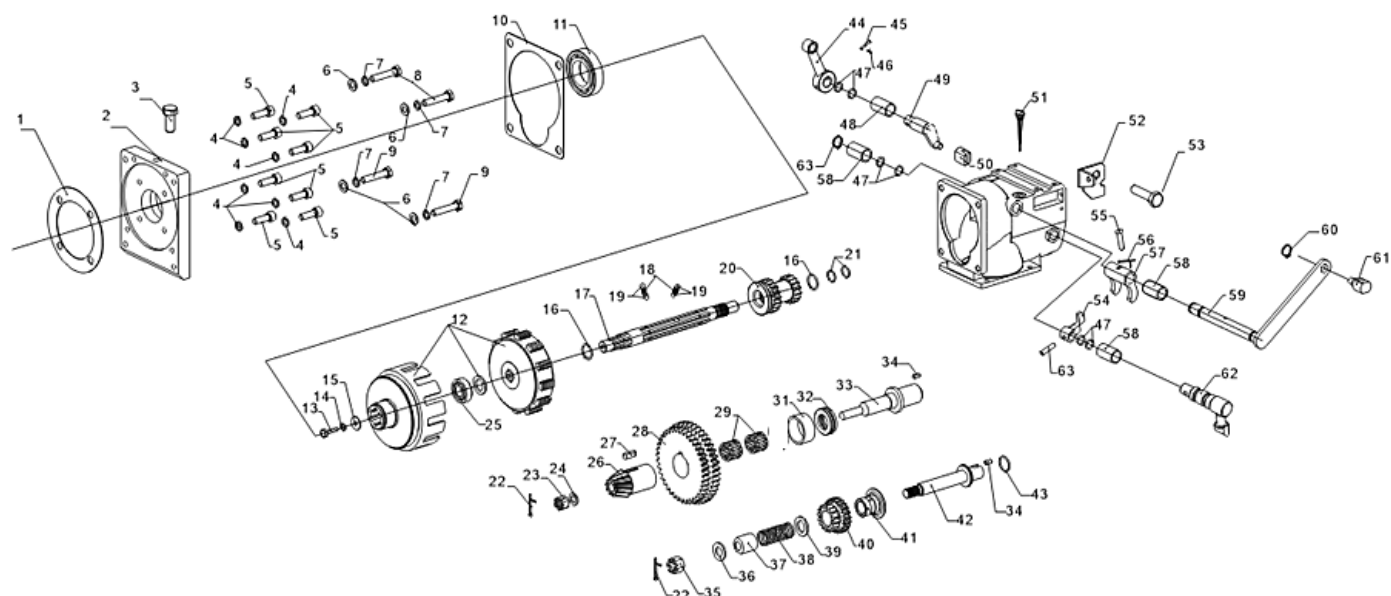


Cod ROTAKT	REF.NO.	PART NO	DESCRIPTION
	W01-1	R300MR000W6-RKT302	ENGINE
	W01-2	90303-1000-3108	NUT
	W01-3	90403-1000-0108	WASHER, FLAT
	W01-4	90408-1000-E108	WASHER, FLAT
	W01-5	58410-U180310-H300	GUARD
	W01-6	76006-U550110-H300	SEAT, ENGINE CONNETING
	W01-7	90005-1040-0108	
	W01-8	90005-1045-0108	
<b>033993</b>	W01-9	80001-U180110-RT01	HOUSING, ENGINE
<b>033994</b>	W01-10	33351-U180410-H300	
<b>033995</b>	W01-11	33351-U180310-H300	
<b>033996</b>	W01-12	90683-U180110-0000	BUSH
	W01-13	90004-0675-0108	



# SCHEMA EXPLODATA ROTAKT RO13R

**FIG.16 In the gearbox (W02)**



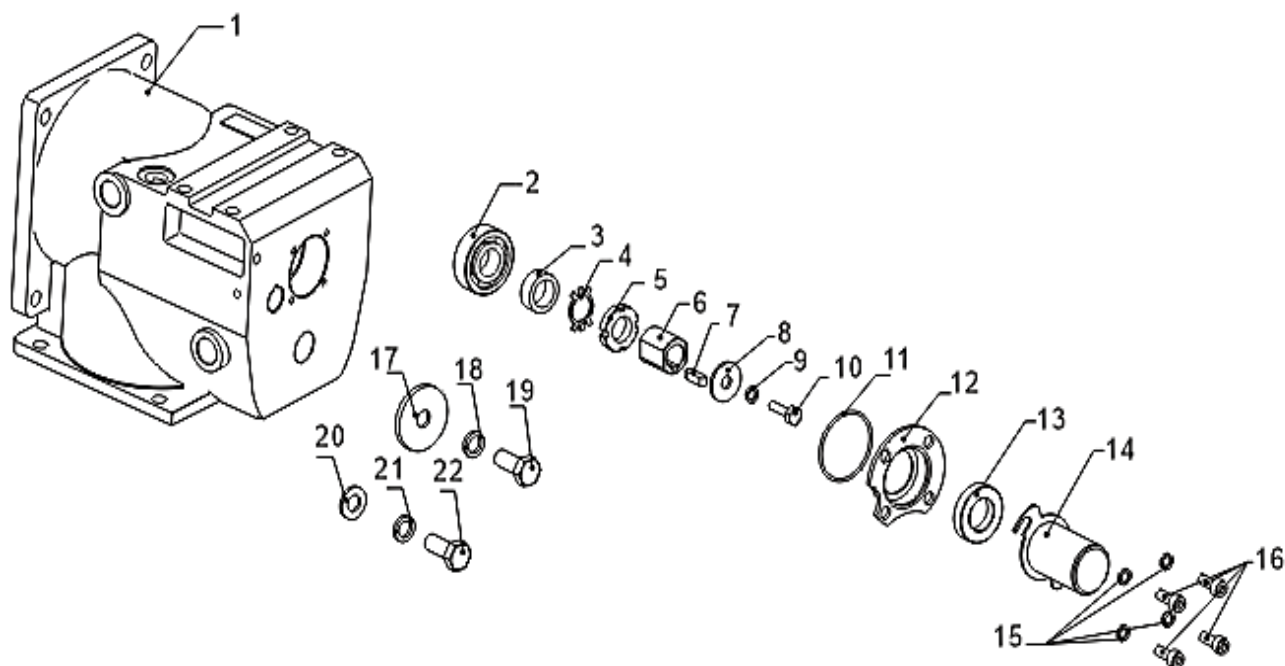
Cod ROTAKT	REF.NO.	PART NO	DESCRIPTION
<b>033997</b>	W02-1	24307-U090210-0000	
<b>033998</b>	W02-2	24305-U180110-RT00	
<b>033999</b>	W02-3	24308-U080110-0000	
	W02-4	90403-0800-Z108	WASHER, FLAT
	W02-5	90102-0825-0108	
	W02-6	90408-1000-E108	WASHER, FLAT
	W02-7	90403-1000-0108	WASHER, FLAT
	W02-8	90005-1040-0108	
	W02-9	90005-1035-0108	
<b>034000</b>	W02-10	24306-U090210-0000	
<b>034001</b>	W02-11	90548-6007-CL	BEARING, DEEP GROOVE BALL
<b>034002</b>	W02-12	22000-U090111-0000	CLUTCH
<b>034003</b>	W02-13	90005-0816-0108	
	W02-14	90403-0800-Z108	WASHER, FLAT
	W02-15	90406-0800-E108	WASHER, FLAT
	W02-16	90578-2503-0608	
<b>034004</b>	W02-17	23501-U090110-0000	AXLE, MAIN
<b>034005</b>	W02-18	24524-U090110-0000	
<b>034006</b>	W02-19	90543-6300-0008	BALL, STEEL
<b>034007</b>	W02-20	28301-U090410-0000	GEAR, DUPLICATE
<b>034008</b>	W02-21	90692-U090510-0000	O-RING RUBBER SEAL
	W02-22	90501-2525-0108	PIN
	W02-23	90307-1000-0108	
	W02-24	90412-U090110-0000	WASHER, FLAT

# SCHEMA EXPLODATA ROTAKT RO13R

Cod ROTAKT	REF.NO.	PART NO	DESCRIPTION
	W02-25	90548-0202-CL	BEARING, DEEP GROOVE BALL
<b>034009</b>	W02-26	23609-U090110-0000	
<b>034010</b>	W02-27	90521-U080110-0000	
<b>034011</b>	W02-28	28301-U090410-0000	GEAR, DUPLICATE
<b>034012</b>	W02-29	90565-3301-00	
	W02-31	90683-U090410-0000	
<b>034013</b>	W02-32	90555-1104-00	
<b>034014</b>	W02-33	23601-U090210-0000	COUNTERSHAFT
	W02-34	90505-0510-0008	
	W02-35	90307-1200-0108	HEXAGON SLOTTED NUT
	W02-36	90408-1200-E108	WASHER, FLAT
	W02-37	23809-U080110-0000	
	W02-38	23808-U080110-0000	
	W02-39	90412-U090610-0000	WASHER, FLAT
<b>034015</b>	W02-40	28301-U090310-0000	GEAR, DUPLICATE
<b>034016</b>	W02-41	23807-U090110-0000	
<b>034017</b>	W02-42	23806-U090110-0000	
<b>034018</b>	W02-43	90692-U080610-0000	O-RING RUBBER SEAL
<b>034019</b>	W02-44	23401-U090110-0000	
	W02-45	90504-0640-0108	
	W02-46	90501-0220-0108	PIN
<b>034020</b>	W02-47	90692-U090410-0000	O-RING RUBBER SEAL
<b>034021</b>	W02-48	90683-U090110-0000	
<b>034022</b>	W02-49	24420-U090210-0000	FORK SUBASSEMBLY, SHIFTS
<b>034023</b>	W02-50	24421-U090310-0000	FORK, SHIFTS
	W02-51	15010-U090110-G400	DIPSTICK SUBASSEMBLY, OIL
	W02-52	54037-U090410-0000	
	W02-53	90001-0812-0108	BOLT
<b>034024</b>	W02-54	24421-U090110-0000	FORK, SHIFTS
	W02-55	90504-0630-0108	
	W02-56	90501-0220-0108	PIN
<b>034025</b>	W02-57	24421-U090210-0000	FORK, SHIFTS
	W02-58	90683-U090210-0000	
	W02-59	24420-U090310-0000	FORK SUBASSEMBLY, SHIFTS
	W02-60	90573-1600-0608	
	W02-61	54037-U090510-0000	
<b>034026</b>	W02-62	24420-U090110-0000	FORK SUBASSEMBLY, SHIFTS
	W02-63	90125-U090110-0000	

# SCHEMA EXPLODATA ROTAKT RO13R

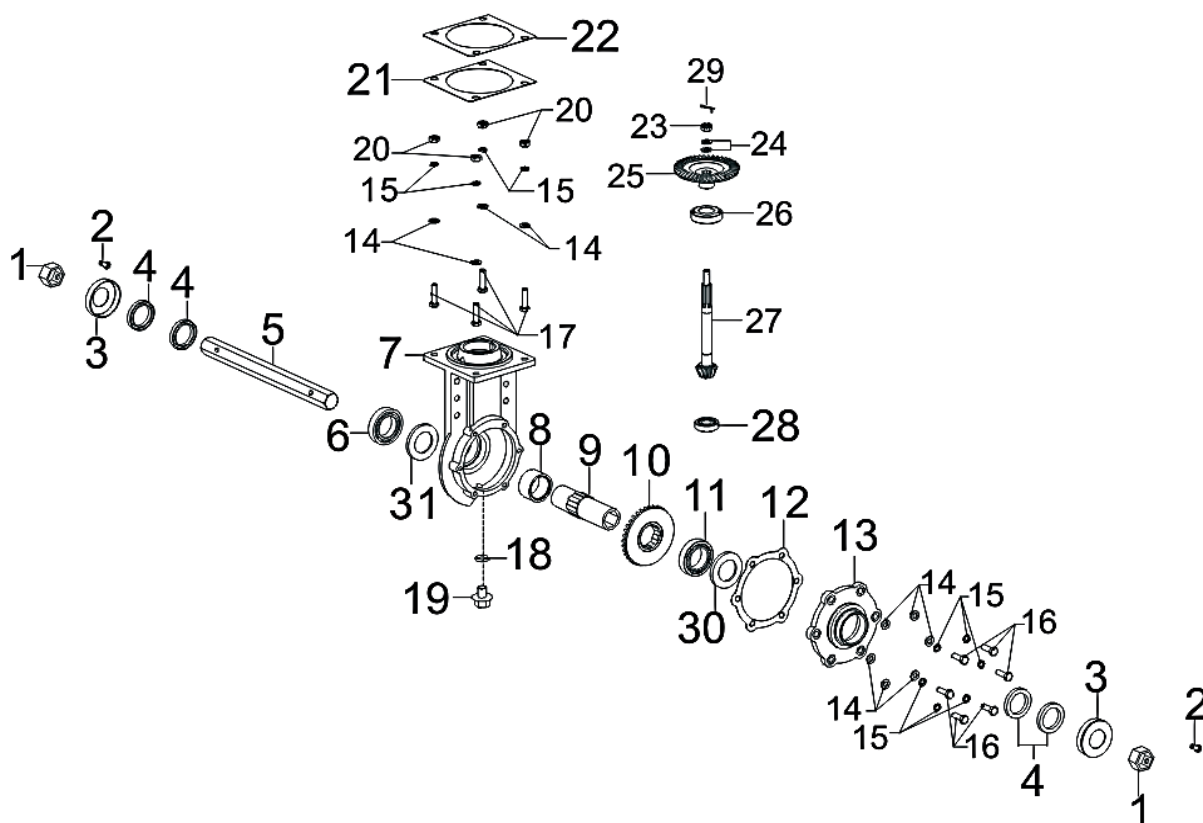
FIG.17 After the box (W03)



Cod ROTAKT	REF.NO.	PART NO	DESCRIPTION
<b>034028</b>	W03-1	76351-U090110-RT00	BOX BODY, TRANSMISSION
	W03-2	90548-0204-CL	BEARING, DEEP GROOVE BALL
	W03-3	90683-U090310-0000	BUSH
<b>034029</b>	W03-4	90422-2000-0608	
<b>034030</b>	W03-5	90317-2000-0608	
	W03-6	23515-U090110-0000	
	W03-7	90521-U080110-0000	Flat key
	W03-8	90401-0800-D108	
	W03-9	90403-0800-Z108	WASHER, FLAT
	W03-10	90005-0816-0108	
<b>034031</b>	W03-11	90692-U090110-0000	O-RING RUBBER SEAL
<b>034032</b>	W03-12	23514-U090110-0000	
	W03-13	90682-U090110-0000	SEAL, OIL
	W03-14	23513-U090110-0000	
	W03-15	90403-0600-0108	WASHER, FLAT
	W03-16	90005-0616-0108	
	W03-17	90412-U090810-0000	WASHER, FLAT
	W03-18	90403-1200-0108	WASHER, FLAT
	W03-19	90005-1225-0108	
	W03-20	90408-1000-E108	WASHER, FLAT
	W03-21	90403-1000-0108	WASHER, FLAT
	W03-22	90005-1025-0108	

# SCHEMA EXPLODATA ROTAKT RO13R

FIG.18 Walking box (W04)



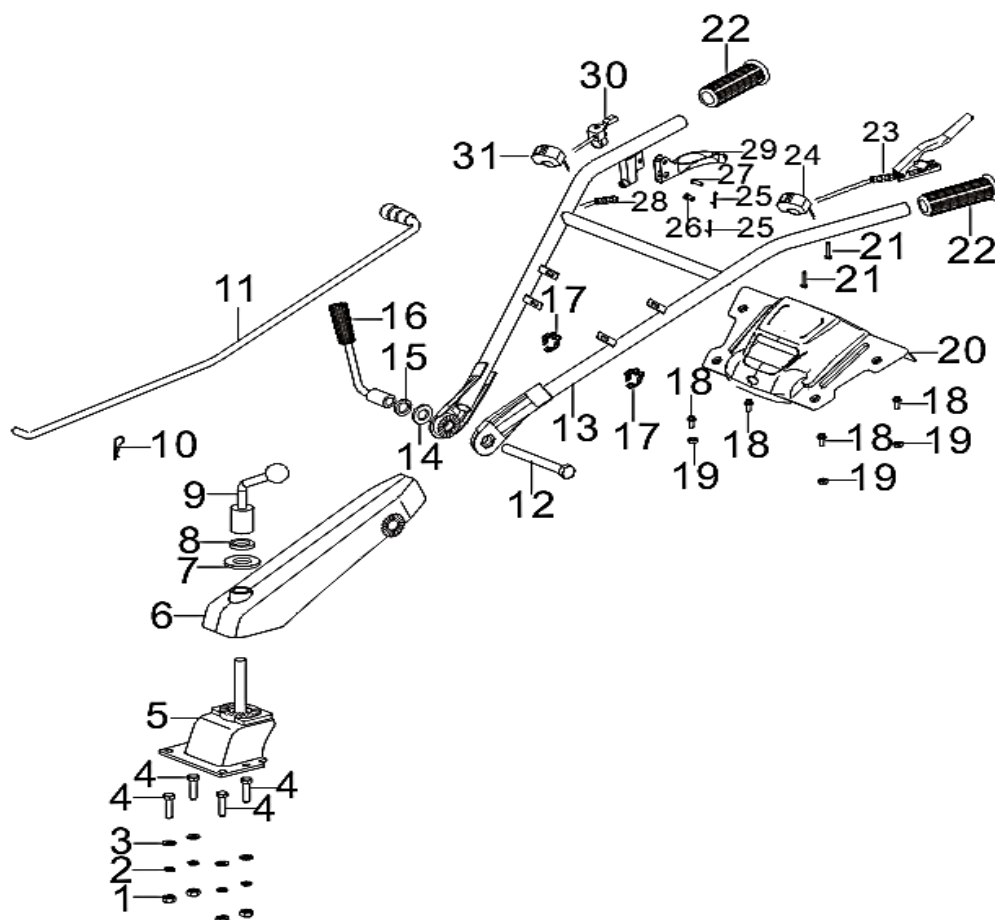
Cod ROTAKT	REF.NO.	PART NO	DESCRIPTION
<b>034033</b>	W04-1	76611-U090110-0000	
	W04-2	90005-0816-0108	
<b>034034</b>	W04-3	76322-U090110-0000	OUTPUT SHAFT DUSTPROOF COVER
<b>034035</b>	W04-4	90682-U090210-0000	SEAL, OIL
	W04-5	76315-U090110-0000	OUTPUT SHAFT
<b>034036</b>	W04-6	90548-0009-CL	BEARING, DEEP GROOVE BALL
<b>034037</b>	W04-7	76351-U090310-RT00	BOX BODY, TRANSMISSION
<b>034038</b>	W04-8	76609-U090110-0000	
<b>034039</b>	W04-9	76608-U090110-0000	
<b>034040</b>	W04-10	76605-U090110-0000	RUNNING GEAR
<b>034041</b>	W04-11	90552-2009-CL	TAPERED ROLLER BEARING
<b>034042</b>	W04-12	76602-U090110-0000	GASKET FOR RUNNING GEAR COVER
<b>034043</b>	W04-13	76301-U090110-RT00	COVER, TRANSMISSION BOX
	W04-14	90408-1000-E1	WASHER, FLAT
	W04-15	90403-1000-01	WASHER, FLAT
	W04-16	90005-1030-0608	
	W04-17	90005-1040-01	
	W04-18	90692-U080710-0000	O-RING RUBBER SEAL
	W04-19	11007-U080110-0000	BOLT, DRAIN PLUG
	W04-20	90303-1000-31	NUT
<b>034044</b>	W04-21	76606-U090110-0000	GASKET FOR WALKING ENCLOSURE

## SCHEMA EXPLODATA ROTAKT RO13R

Cod ROTAKT	REF.NO.	PART NO	DESCRIPTION
	W04-22	76606-U090210-0000	GASKET FOR WALKING ENCLOSURE
<b>034045</b>	W04-23	90334-U090110-0000	
	W04-24	90408-1200-E1	WASHER, FLAT
<b>034046</b>	W04-25	76604-U090110-0000	FOLLOWER GEAR
<b>034047</b>	W04-26	90552-0206-CL	TAPERED ROLLER BEARING
<b>034048</b>	W04-27	76603-U090110-0000	GEAR SHAFT
	W04-28	90552-0204-CL	TAPERED ROLLER BEARING
	W04-29	90501-2525-01	PIN
<b>034049</b>	W04-30	90412-U090410-0000	WASHER, FLAT
	W04-31	90412-U090510-0000	WASHER, FLAT

# SCHEMA EXPLODATA ROTAKT RO13R

FIG.19 Armrest frame part (W05)



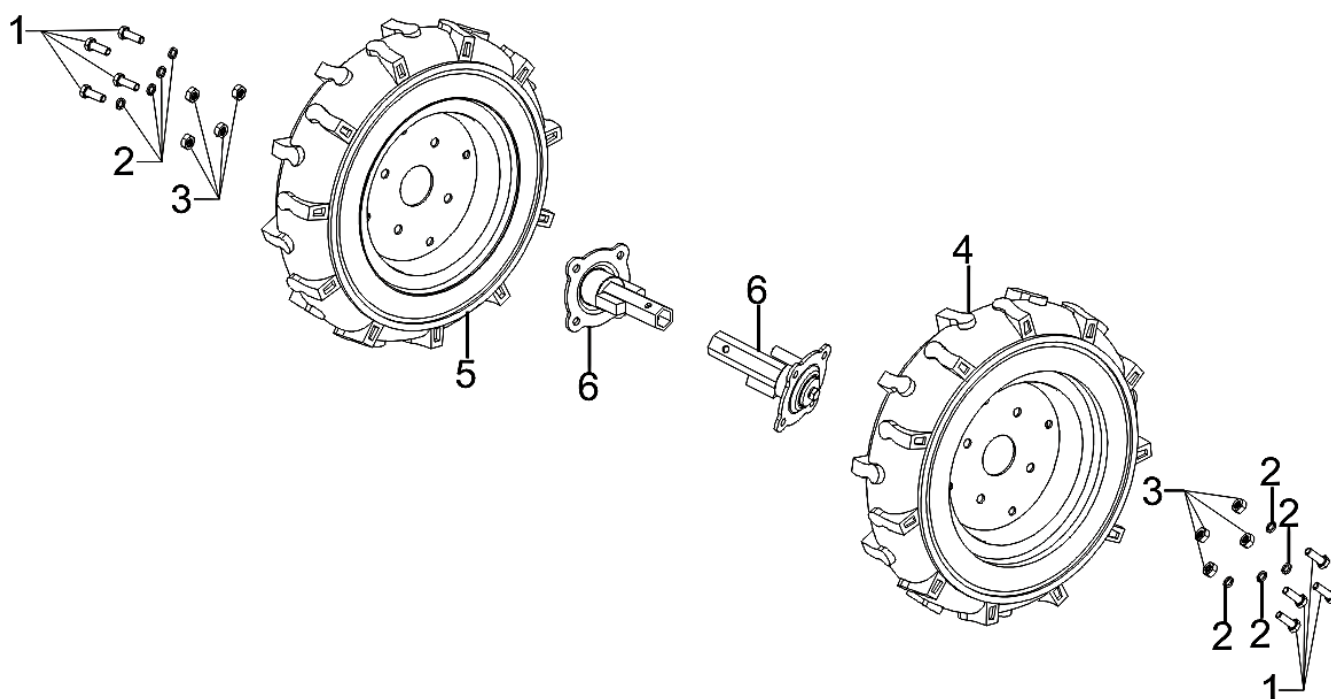
Cod ROTAKT	REF.NO.	PART NO	DESCRIPTION
	W05-1	90303-1000-3108	NUT
	W05-2	90403-1000-0108	WASHER, FLAT
	W05-3	90408-1000-E108	WASHER, FLAT
	W05-4	90005-1040-0108	
<b>034050</b>	W05-5	54200-U090410-RT00	HANDLE BASE ASSY.
<b>034051</b>	W05-6	54200-U090310-RT00	HANDLE BASE ASSY.
	W05-7	90408-2000-E108	WASHER, FLAT
	W05-8	90403-2000-0108	WASHER, FLAT
<b>034052</b>	W05-9	54203-U090110-0000	LOCKING HANDLE
	W05-10	90583-0238-01	R PIN
	W05-11	54205-U090111-QC00	GEAR LEVER
<b>034053</b>	W05-12	90004-U070110-01	
	W05-13	54110-U190110-GS00	HANDLE TUBE ASSY
	W05-14	90408-1600-E108	WASHER, FLAT
	W05-15	90403-1600-0108	WASHER, FLAT
<b>033924</b>	W05-16	54203-U080111-0000	LOCKING HANDLE
	W05-17	90684-U110111-0000	CLIP

# SCHEMA EXPLODATA ROTAKT RO13R

Cod ROTAKT	REF.NO.	PART NO	DESCRIPTION
	W05-18	90007-0616-A108	BOLT
	W05-19	90305-0600-3108	NUT
<b>033927</b>	W05-20	54125-U500210-Q200	PANEL
	W05-21	90007-0630-A108	BOLT
	W05-22	54101-U060110-0000	SLEEVE, HANDLE RUBBER
<b>034054</b>	W05-23	24510-U190210-0000	
<b>034055</b>	W05-24	35540-U180110-0000	SWITCH SUBASSEMBLY, STOP ENGINE
	W05-25	90501-0220-0108	
	W05-26	90504-U080110-0008	PIN ROLL
	W05-27	90504-0625-0108	
<b>034056</b>	W05-28	24006-U190210-0000	REVERSE GEAR CABLE
<b>034057</b>	W05-29	54035-U070410-H300	HANDLE,IDLE CONTROL
<b>034058</b>	W05-30	16550-U190210-0000	THROTTLE SWITCH ASSEMBLE
<b>034059</b>	W05-31	35540-U190310-0000	SWITCH SUBASSEMBLY, STOP ENGINE

# SCHEMA EXPLODATA ROTAKT RO13R

FIG.20 Wheel part (W06)

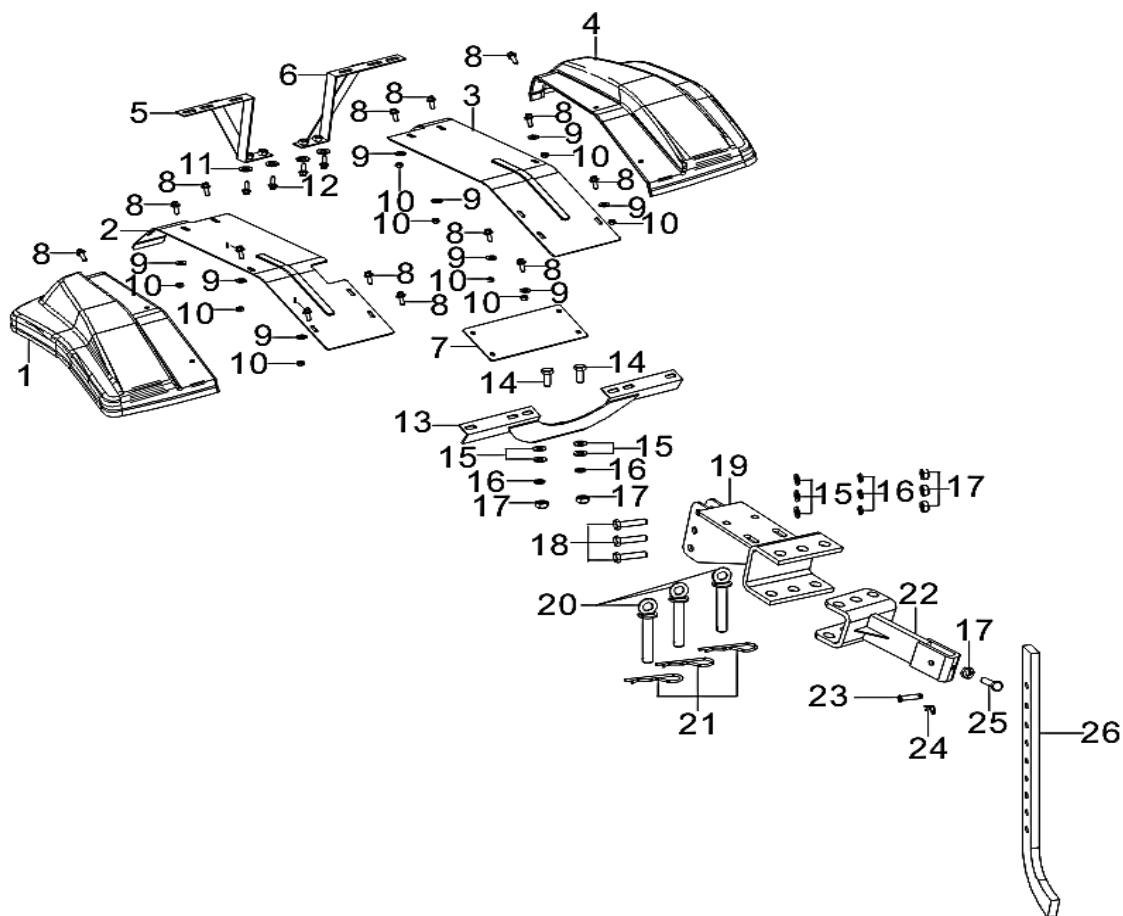


Cod ROTAKT	REF.NO.	PART NO	DESCRIPTION
	W06-1	90005-1025-0108	
	W06-2	90403-1000-0108	WASHER, FLAT
	W06-3	90303-1000-3108	NUT
	W06-4	76008-U090110-GS00	WHEEL, TRANSPORTION
	W06-5	76008-U090210-GS00	WHEEL, TRANSPORTION
	W06-6	42002-U090310-H300	SHAFT, REAR WHEEL



# SCHEMA EXPLODATA ROTAKT RO13R

FIG.21 Mudguard part (W07)



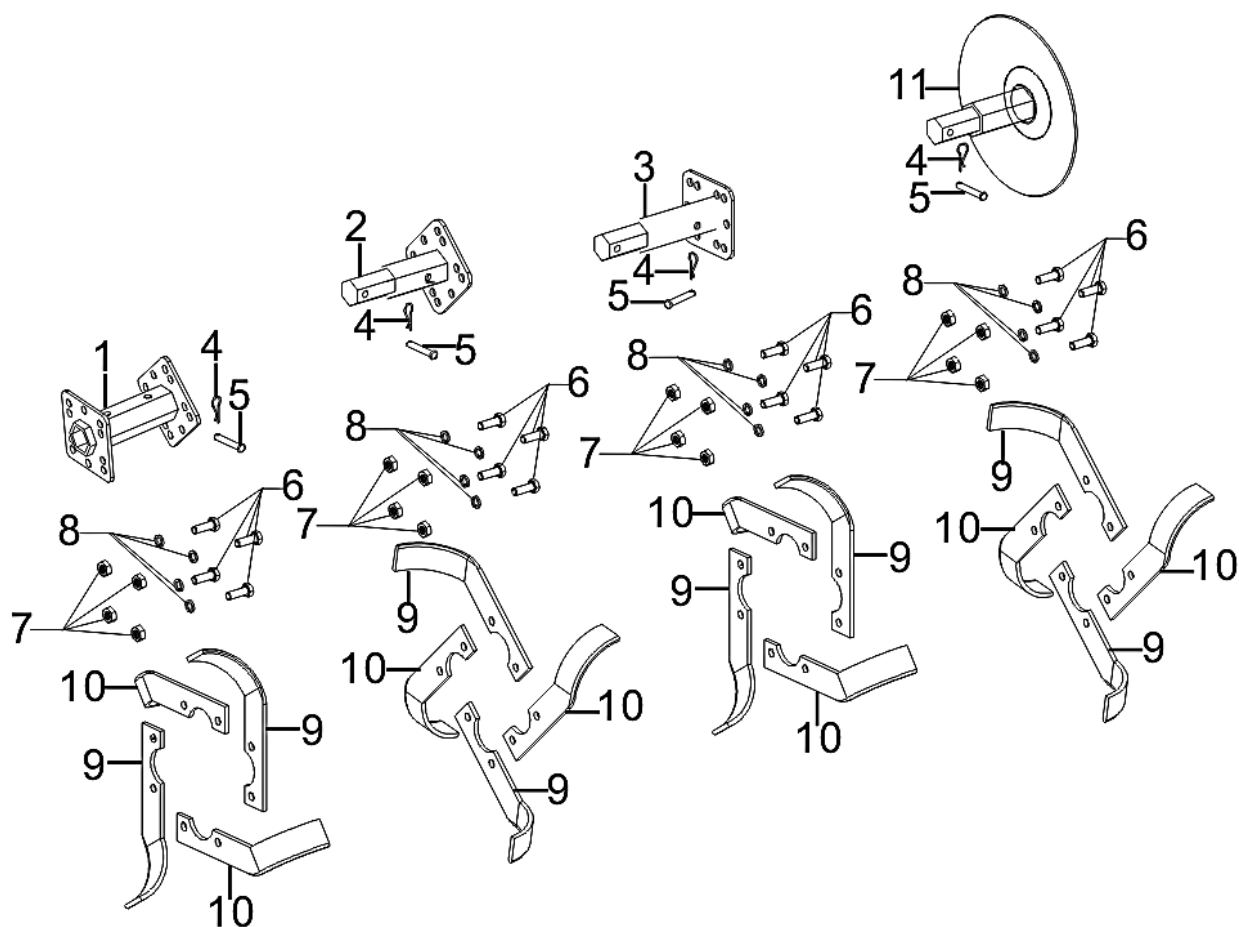
Cod ROTAKT	REF.NO.	PART NO	DESCRIPTION
	W07-1	76007-U060410-RT00	FENDER, MINI-TILLER
	W07-2	76007-U190110-RT00	FENDER, MINI-TILLER
	W07-3	76007-U550110-RT00	FENDER, MINI-TILLER
	W07-4	76007-U060510-RT00	FENDER, MINI-TILLER
	W07-5	80009-U190110-H300	SUPPORT, FRONT FENDER
	W07-6	80009-U190210-H300	SUPPORT, FRONT FENDER
	W07-7	76007-U190310-RT00	FENDER, MINI-TILLER
	W07-8	90007-0616-A108	BOLT
	W07-9	90406-0600-E108	
	W07-10	90325-0600-3108	
	W07-11	90406-0800-E108	WASHER, FLAT
	W07-12	90001-0816-0108	BOLT
	W07-13	82002-U190110-H300	SUPPORT, REAR FENDER
	W07-14	90005-1025-0108	
	W07-15	90408-1000-E108	WASHER, FLAT
	W07-16	90403-1000-0108	WASHER, FLAT
	W07-17	90303-1000-3108	NUT

## SCHEMA EXPLODATA ROTAKT RO13R

Cod ROTAKT	REF.NO.	PART NO	DESCRIPTION
	W07-18	90005-1050-0108	
	W07-19	76025-U240210-H300	
	W07-20	90504-U090210-0000	PIN ROLL
	W07-21	90583-3581-01	R PIN
	W07-22	76024-U240110-H300	
	W07-23	90504-0840-0108	
	W07-24	90583-0238-01	R PIN
	W07-25	90005-1035-0108	
	W07-26	76016-U080110-H300	FRONT AND REAR BRACKET

# SCHEMA EXPLODATA ROTAKT RO13R

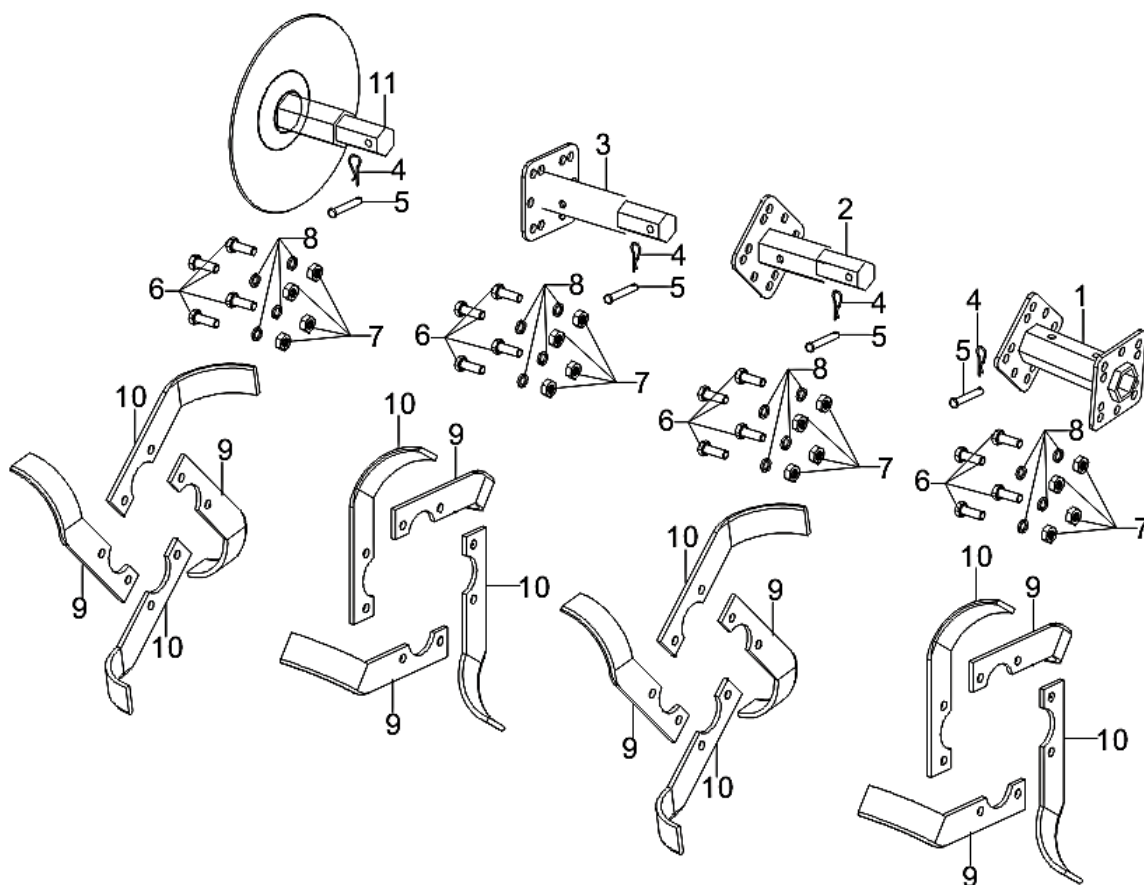
FIG.22 Plow left (W08)



Cod ROTAKT	REF.NO.	PART NO	DESCRIPTION
	W08-1	76725-U500510-H300	
	W08-2	76725-U500210-H300	
	W08-3	76725-U500410-H300	
	W08-4	90504-0850-0108	PIN ROLL
	W08-5	90583-0238-01	R PIN
	W08-6	90005-1030-0608	
	W08-7	90303-1000-3608	NUT
	W08-8	90403-1000-0608	WASHER, FLAT
	W08-9	76721-U070310-H300	
	W08-10	76721-U070410-H300	
	W08-11	76723-U090110-H300	

# SCHEMA EXPLODATA ROTAKT RO13R

FIG.23 Plow right (W09)



Cod ROTAKT	REF.NO.	PART NO	DESCRIPTION
	W09-1	76725-U500510-H300	
	W09-2	76725-U500210-H300	
	W09-3	76725-U500410-H300	
	W09-4	90504-0850-0108	PIN ROLL
	W09-5	90583-0238-01	R PIN
	W09-6	90005-1030-0608	
	W09-7	90303-1000-3608	NUT
	W09-8	90403-1000-0608	WASHER, FLAT
	W09-9	76721-U070310-H300	
	W09-10	76721-U070410-H300	
	W09-11	76723-U090110-H300	