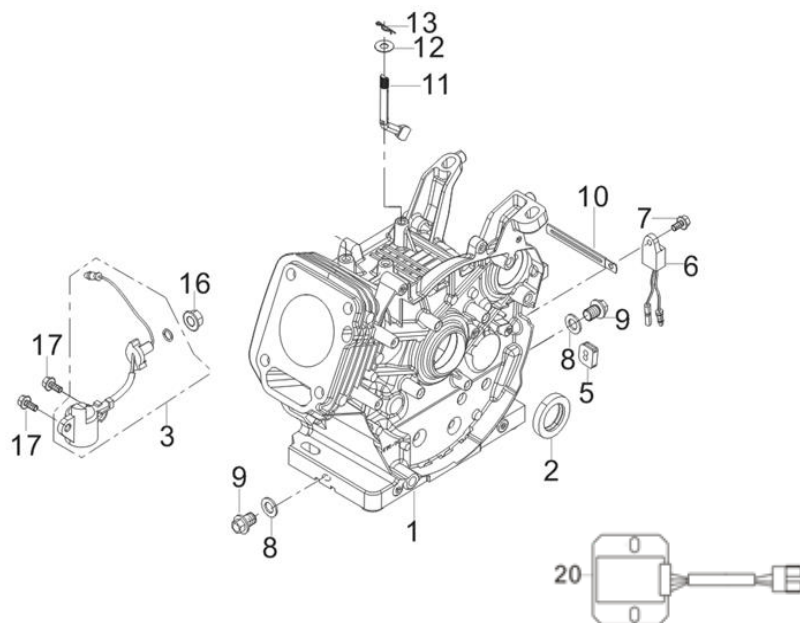


# RG5.0-130Q-Z-2

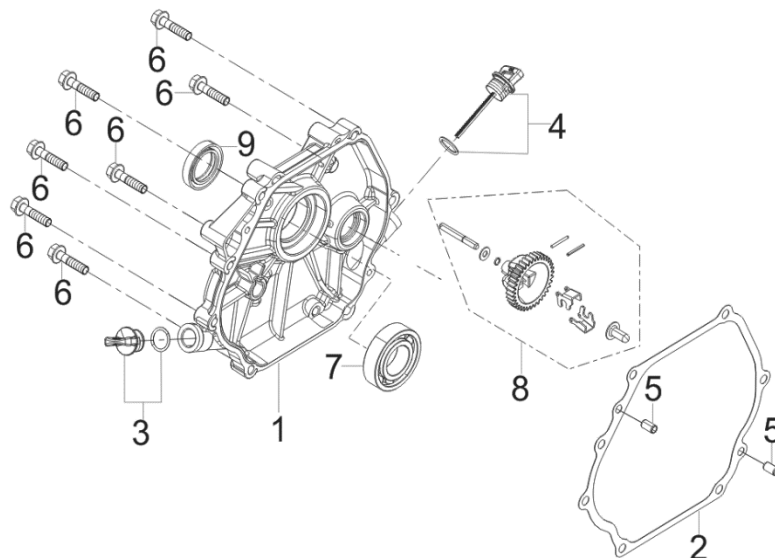
FIG.1 CRANKCASE. / GEAR ASSY, GOVERNOR. 曲轴箱体部件 + 调速齿轮部件(E01)



	REF.NO. 序号	PART NO 物料代码	DESCRIPTION 英文名	Q'TY 数量	包装数
033933	E01-1	11310-Z730110-0BA0	CRANKCASE SUBASSEMBLY.	1	1
033934	E01-2	90682-Z080110-00A0	SEAL, OIL	1	1
	E01-3	37060-Z080120-00A0	SENSOR, ENGINE OIL	1	1
	E01-5	28101-Z080110-00A0	PLUG, RUBBER	1	1
	E01-6	37050-Z010210-00A0	PROTECTOR, OIL	1	1
	E01-7	90001-0612-01A0	BOLT	1	1
	E01-8	90412-Z080110-00A0	WASHER, FLAT	2	1
	E01-9	11007-Z080110-00A0	BOLT, DRAIN PLUG	2	1
	E01-10	90684-Z010310-00A0	CLIP	1	1
	E01-11	16061-Z080110-00A0	ARM, GOVERNOR	1	1

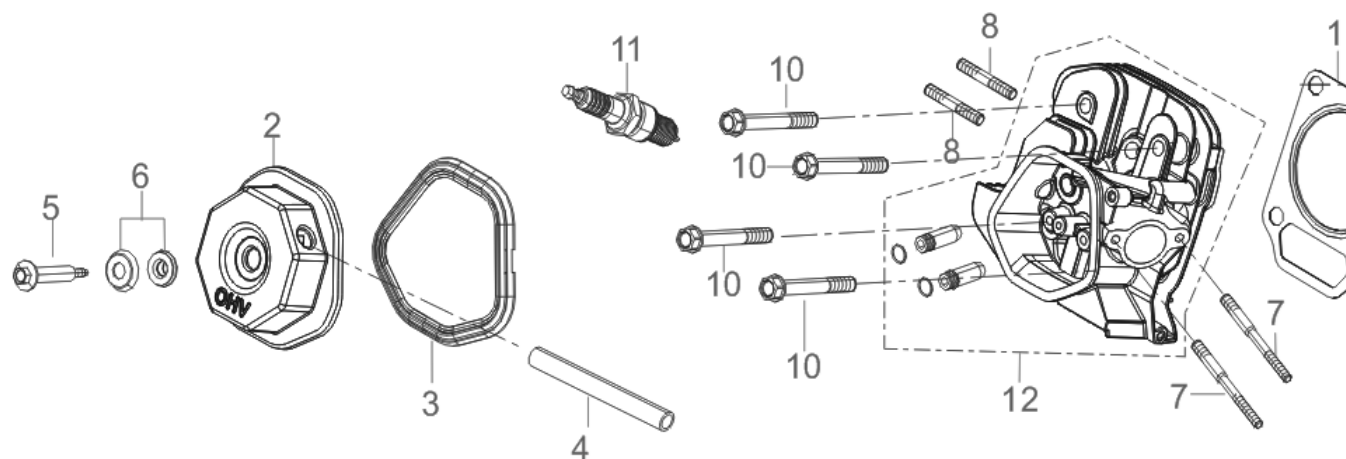
	E01-12	90412-Z080210-00A0	WASHER, FLAT	1	1
	E01-13	90501-Z010110-00A0	PIN	1	1
	E01-16	90305-Z010210-01A0	NUT	1	1
	E01-17	90001-0616-01A0	BOLT	2	1
<b>033935</b>	E01-20	30060-Z190310-00A0	REGULATOR, VOLTAGE	1	1

**FIG.2 COVER SUBASSEMBLY, CRANKCASE 曲轴箱盖部件(E02)**



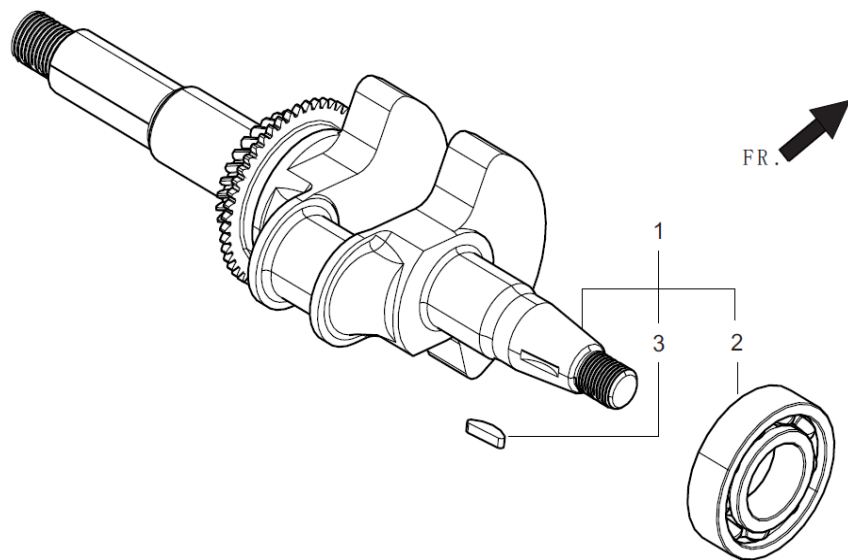
	REF.NO. 序号	PART NO 物料代码	DESCRIPTION 英文名	Q'TY 数量	包装数
<b>033936</b>	E02-1	11411-Z580410-0BA0	COVER, CRANKCASE	1	1
<b>033937</b>	E02-2	11001-Z580120-00A0	GASKET, CRANKCASE	1	1
	E02-3	15030-Z080130-Q5A0	PLUG SUBASSEMBLY, ENGINE OIL	1	1
	E02-4	15010-Z080130-Q5A0	DIPSTICK SUBASSEMBLY, OIL	1	1
	E02-5	90502-0912-00A0	PIN	2	1
	E02-6	90001-0835-01A0	BOLT	7	1
	E02-7	90547-0206-00A0	BEARING, DEEP GROOVE BALL	1	1
<b>033938</b>	E02-8	16400-Z080110-00A0	GEAR ASSY, GOVERNOR	1	1
	E02-9	90682-Z080110-00A0	SEAL, OIL	1	1

**FIG.3 HEAD SUBASSEMBLY, CYLINDER / PLUG, SPARK 气缸头部件/火花塞 (E03)**



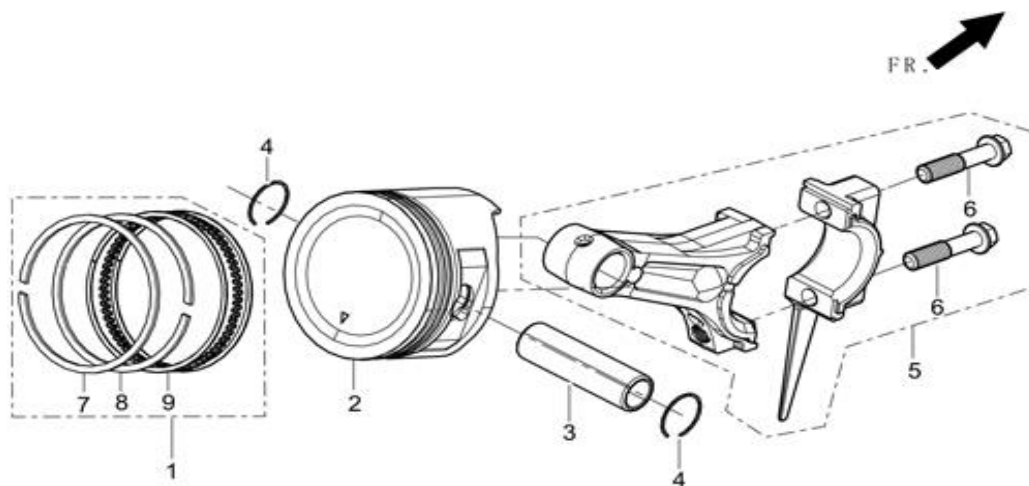
	REF.NO. 序号	PART NO 物料代码	DESCRIPTION 英文名	Q'TY 数量	包装数
033939	E03-1	12131-Z730210-00A0	GASKET, CYLINDER HEAD	1	1
033940	E03-2	12410-Z580110-01A9	COVER SUBASSEMBLY, CYLINDER HEAD	1	1
033941	E03-3	12004-Z580110-00A9	GASKET, CYLINDER HEAD COVER	1	1
033942	E03-4	17004-Z730110-00A0	TUBE, BREATHER	1	1
	E03-5	12032-Z080110-01A0	BOLT, CYLINDER HEAD	1	1
	E03-6	12034-Z080110-00A9	Cylinder epicranium bolt seal&gasket unit	1	1
	E03-7	90204-Z080320-00A0	STUD	2	1
	E03-8	90204-Z100320-00A0	STUD	2	1
	E03-9	90502-1220-00A0	PIN	2	1
	E03-10	12003-Z080110-00A0	BOLT, CYLINDER HEAD	4	1
	E03-11	30010-Z010110-00A0	PLUG, SPARK	1	1
033943	E03-12	12140-Z730210-0BA9	HEAD SUBASSEMBLY, CYLINDER	1	1

**FIG.4 ROD,CRANKSHAFT CONNETING 曲柄连杆组件(E04)**



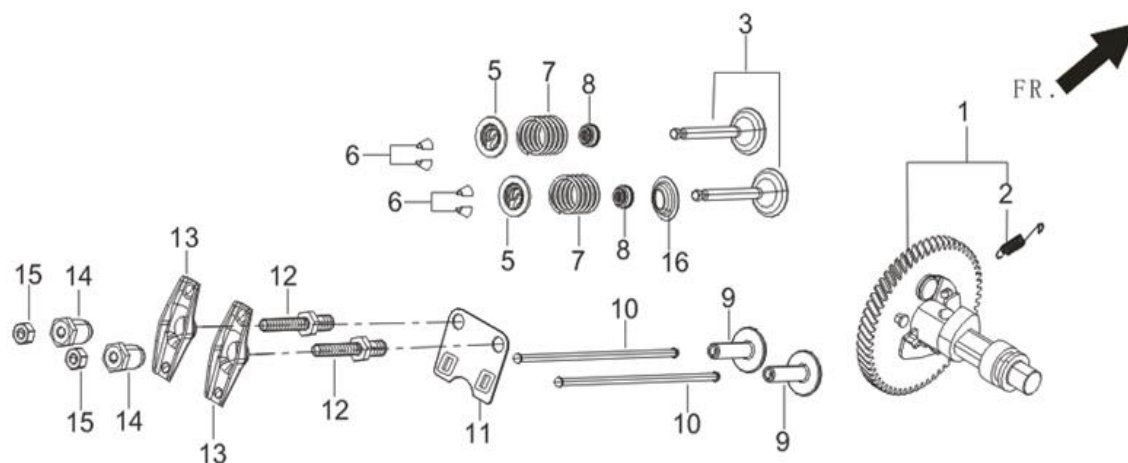
	REF.NO. 序号	PART NO 物料代码	DESCRIPTION 英文名	Q'TY 数量	包装数
033944	E04-1	13300-Z732510-00A0	CRANKSHAFT ASSY.	1	1

**FIG.5 RING SET,OIL / ROD,CRANKSHAFT CONNETING 油环组合/曲柄连杆组件 (E05)**



	REF.NO. 序号	PART NO 物料代码	DESCRIPTION 英文名	Q'TY 数量	包装数
033945	E05-1	13200-Z730110-00A9	RING ASSY, PISTON	1	1
033946	E05-2	13111-Z730120-00A9	PISTON	1	1
033947	E05-3	13121-Z730110-00A0	PIN, PISTON	1	1
033948	E05-4	13122-Z730110-00A9	CLIP, PISTON PIN	2	1
033949	E05-5	13010-Z730120-00A9	ROD, CONNECTING	1	1

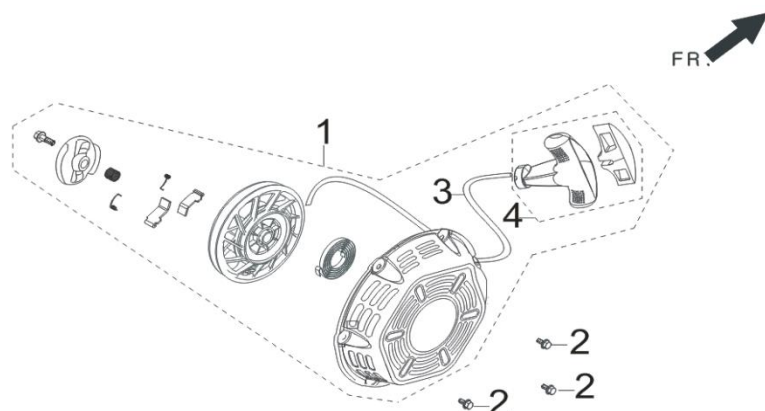
**FIG.6 TRAIN,VALVE / CAMSHAFT SUBASSEMBLY 配气机构组件/凸轮轴 (E06)**



	REF.NO. 序号	PART NO 物料代码	DESCRIPTION 英文名	Q'TY 数量	包装数
033950	E06-1	14200-Z730120-00A9	CAMSHAFT ASSY.	1	1
	E06-3	12110-Z730110-00A9	VALVES SET	1	1
033951	E06-5	12112-Z730110-00A0	SEAT, VALVE SPRING	2	1
033952	E06-6	12109-Z730110-00A0	CLAMP, VALVE LOCK	4	1
033953	E06-7	12103-Z730110-00A9	SPRING, VALVE	2	1
033954	E06-8	12101-Z020110-00A0	GUIDE, SEAL	2	1
033955	E06-9	14081-Z580110-00A0	TAPPET, VALVE	2	1
033956	E06-10	14070-Z730110-00A0	LIFTER, VALVE	2	1

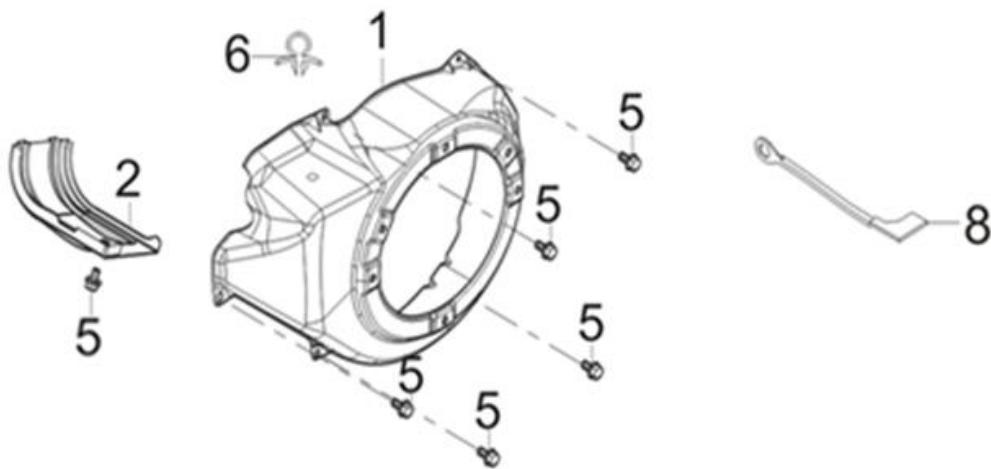
033957	E06-11	14090-Z080110-00A0	PLATE SUBASSEMBLY, LIFTER STOPPER	1	1
033958	E06-12	14313-Z010110-00A0	BOLT, ROCKER SHAFT	2	1
029976	E06-13	14311-Z080110-00A0	ROCKER, VALVE	2	1
033850	E06-14	14314-Z010110-00A0	NUT, VALVE ADJUSTING	2	1
033851	E06-15	14312-Z010110-00A0	NUT, VALVE LOCK	2	1
033959	E06-16	12105-Z080110-00A0	RETAINER, VALVE SPRING	1	1

**FIG.7 STARTER,RECOIL 手起动组件 (E07)**



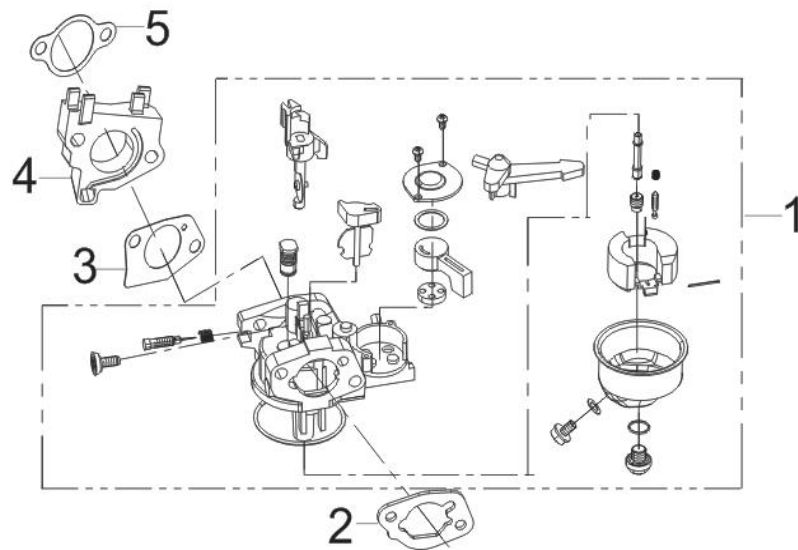
	REF.NO. 序号	PART NO 物料代码	DESCRIPTION 英文名	Q'TY 数量	包装数
033960	E07-1	28200-Z081210-RT00	STARTER ASSY, RECOIL	1	1
	E07-2	90001-0608-01	BOLT	3	1

**FIG.8 SHROUD / SHIELD,LOWER 缸体导风罩/下护罩 (E08)**



	REF.NO. 序号	PART NO 物料代码	DESCRIPTION 英文名	Q'TY 数量	包装数
<b>033961</b>	E08-1	28110-Z080410-RT00	SHROUD	1	1
	E08-2	19304-Z080110-00A0	SHROUD, CYLINDER BODY	1	1
	E08-5	90001-0612-01A0	BOLT	6	1
	E08-6	90684-Z080110-00A0	CLIP	1	1
	E08-8	35555-Z010410-00A0	WIRE, STOP ENGINE SWITCH GROUNDING	1	1

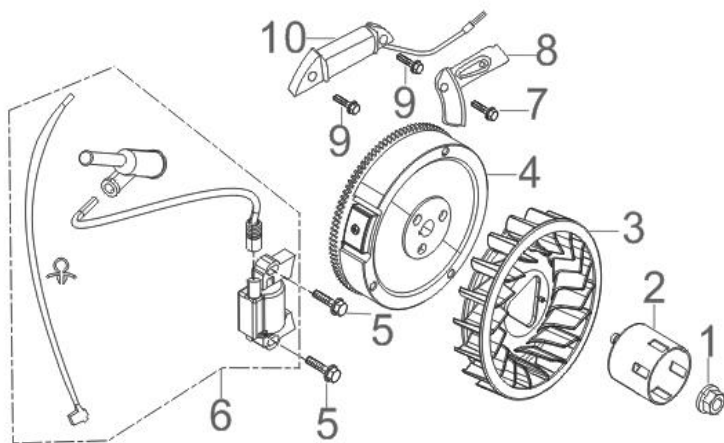
**FIG.9 CARBURETOR ASSY. 化油器部件 (E09)**



	REF.NO. 序号	PART NO 物料代码	DESCRIPTION 英文名	Q'TY 数量	包装数
033962	E09-1	16100-Z730310-00A9	CARBURETOR ASSY.	1	1
033963	E09-2	17001-Z080210-00A0	GASKET, AIR CLEANER	1	1
033964	E09-3	16001-Z080110-00A0	GASKET, CARBURETOR	1	1
033965	E09-4	16003-Z730110-00A0	PLATE, CARBURETOR INSULATOR	1	1
033966	E09-5	17002-Z080110-00A0	GASKET, INLET	1	1

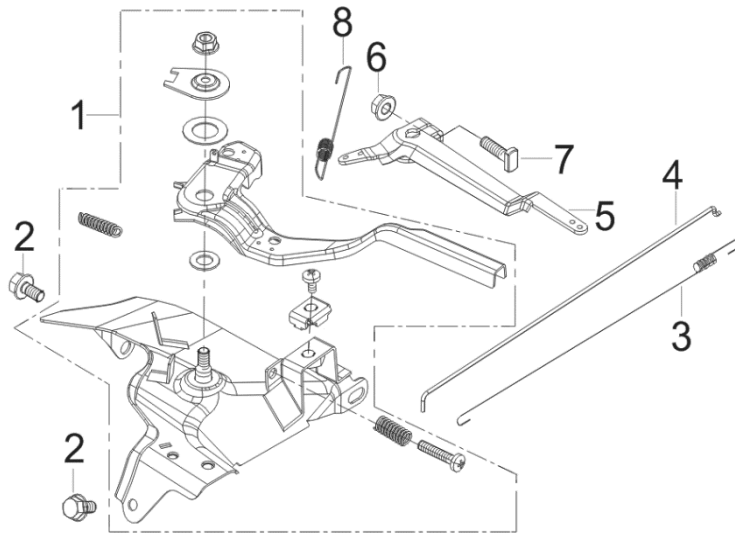
**FIG.10 FLYWHEEL / IMPELLER / STARTER PULLEY / IGNITION COIL 飞轮/叶轮/启动杯/点火线圈 (E10)**





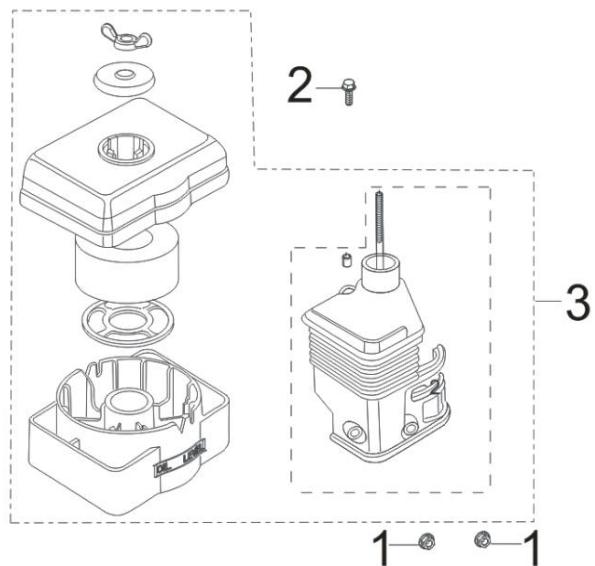
	REF.NO. 序号	PART NO 物料代码	DESCRIPTION 英文名	Q'TY 数量	包装数
	E10-1	13501-Z080110-00A0	NUT, FLYWHEEL	1	1
<b>033979</b>	E10-2	28002-Z080310-00A0	PULLEY, STARTER	1	1
<b>033980</b>	E10-3	19352-Z080110-00A0	IMPELLER	1	1
<b>033981</b>	E10-4	13510-Z080410-00A0	FLYWHEEL SUBASSEMBLY	1	1
	E10-5	90001-0628-01A0	BOLT	2	1
	E10-6	30400-Z080910-00A0	COIL, IGNITION	1	1
	E10-7	90001-0610-01A0	BOLT	1	1
	E10-8	30001-Z160110-00A0	CLAMP, CHARGE COIL	1	1
	E10-9	90001-0628-01A0	BOLT	2	1
<b>033982</b>	E10-10	30140-Z160510-00A0	COIL SUBASSEMBLY, CHARGE	1	1

**FIG.11 CONTROL ASSY, THROTTLE 油门操纵部件 (E11)**



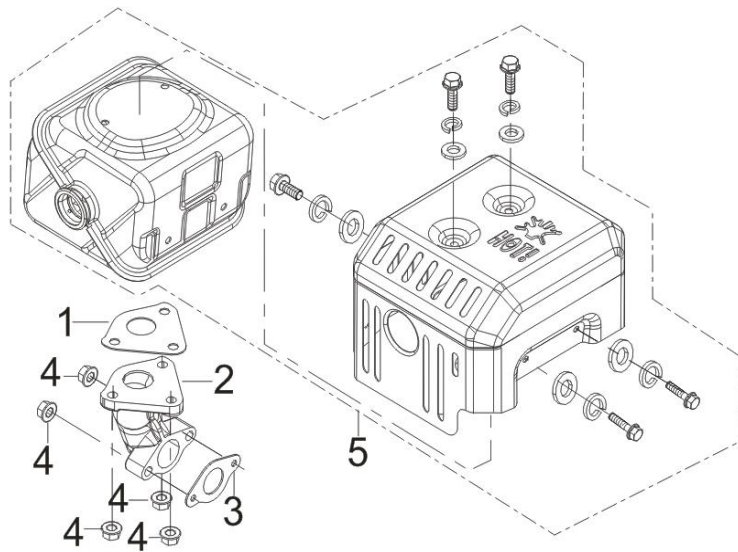
	REF.NO. 序号	PART NO 物料代码	DESCRIPTION 英文名	Q'TY 数量	包装数
<b>033983</b>	E11-1	16520-Z080430-00A0	CONTROL ASSY, THROTTLE	1	1
<b>033984</b>	E11-2	90001-0612-01A0	BOLT	2	1
<b>029995</b>	E11-3	16012-Z080110-00A0	SPRING, THROTTLE VALVE RETURNING	1	1
	E11-4	16062-Z080110-00A0	ROD, GOVERNEOR	1	1
	E11-5	16070-Z080110-00A0	SUPPORT SUBASSEMBLY, GOVERNOR	1	1
	E11-6	90305-0600-31A0	NUT	1	1
	E11-7	16072-Z010110-00A0	BOLT, GOVERNOR SUPPORT	1	1
<b>033985</b>	E11-8	16063-Z080310-00A0	SPRING, GOVERNOR	1	1

**FIG.12 CLEANER, AIR 空滤器 (F01)**



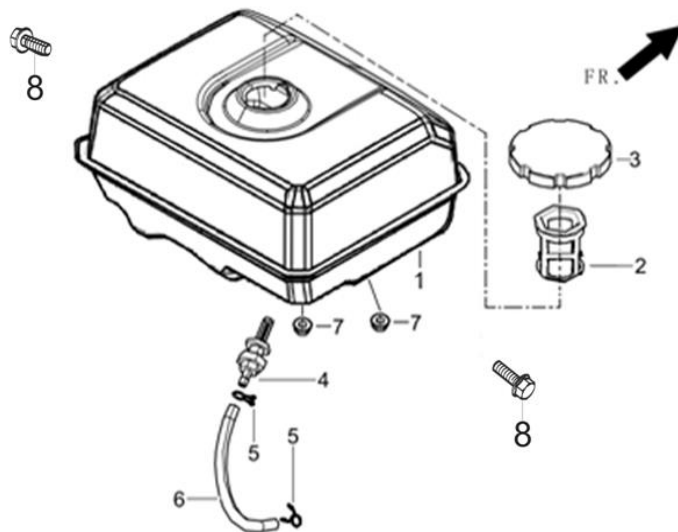
	REF.NO. 序号	PART NO 物料代码	DESCRIPTION 英文名	Q'TY 数量	包装数
	F02-1	90305-0600-31A0	NUT	2	1
	F02-2	90007-0620-A1A0	BOLT	1	1
033986	F02-3	17100-Z580310-00A0	CLEANER, AIR	1	1

**FIG.13 MUFFLER ASSY. 消声器部件 (F02)**



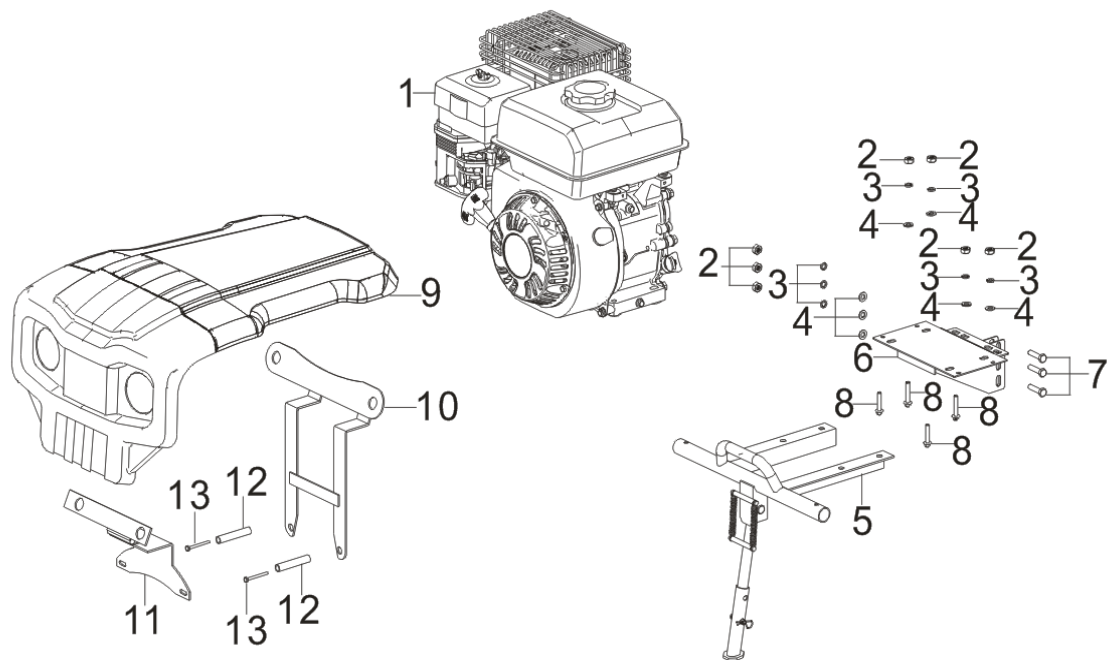
	REF.NO. 序号	PART NO 物料代码	DESCRIPTION 英文名	Q'TY 数量	包装数
033987	F02-1	18101-Z080110-00A0	GASKET, MUFFLER	1	1
033988	F02-2	18150-Z080210-00A0	PIPE, EXHAUST	1	1
030000	F02-3	18001-Z080110-00A0	GASKET, EXHAUST OUTLET	1	1
	F02-4	90305-0800-31A0	NUT	5	1
033989	F02-5	18100-Z080710-00A0	MUFFLER ASSY.	1	1

**FIG.14 TANK ASSY, FUEL 油箱部件 (F03)**



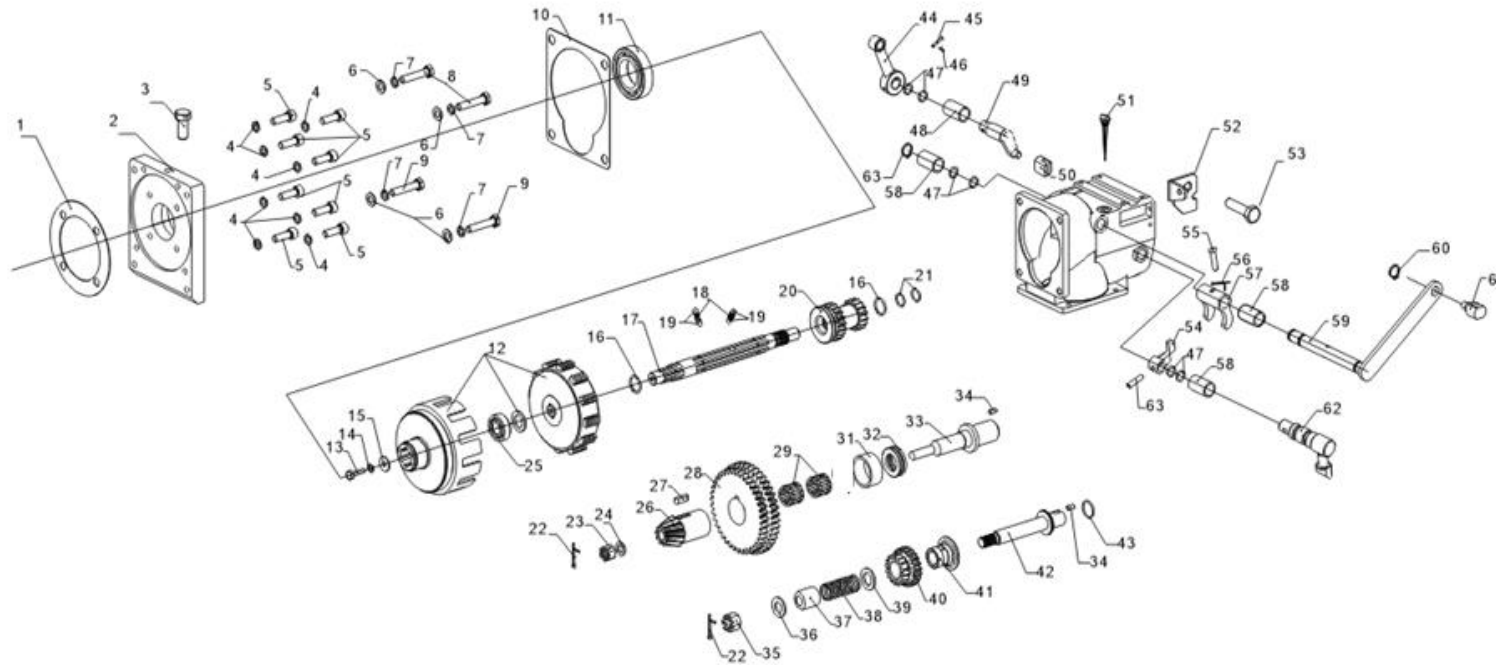
	REF.NO. 序号	PART NO 物料代码	DESCRIPTION 英文名	Q'TY 数量	包装数
033990	F03-1	16620-Z080410-H3AP	TANK, FUEL	1	1
033868	F03-2	16652-Z010610-00A0	STRAINER, FUEL	1	1
033869	F03-3	16730-Z010820-QBA0	COVER, FUEL TANK	1	1
	F03-4	16680-Z010110-00A0	OUTLET SUBASSEMBLY, FUEL TANK OIL	1	1
	F03-5	90740-Z010210-00A0	COLLAR	2	1
033992	F03-6	90686-Z080310-00A0	TUBE, FUEL	1	1
	F03-7	90305-0800-31A0	NUT	2	1
	F03-8	90001-0820-01A0	BOLT	2	1

**FIG.15 发动机固定部分 (W01)**



	REF.NO. 序号	PART NO 物料代码	DESCRIPTION 英文名	Q'TY 数量	包装数
	W01-1	R300MR000W6-RKT302	ENGINE		1
	W01-2	90303-1000-3108	NUT		7
	W01-3	90403-1000-0108	WASHER, FLAT		7
	W01-4	90408-1000-E108	WASHER, FLAT		7
	W01-5	58410-U180310-H300	GUARD		1
	W01-6	76006-U550110-H300	SEAT, ENGINE CONNETING		1
	W01-7	90005-1040-0108			3
	W01-8	90005-1045-0108			4
033993	W01-9	80001-U180110-RT01	HOUSING, ENGINE		1
033994	W01-10	33351-U180410-H300			1
033995	W01-11	33351-U180310-H300			1
033996	W01-12	90683-U180110-0000	BUSH		2
	W01-13	90004-0675-0108			2

# FIG.16 变速箱内 (W02)



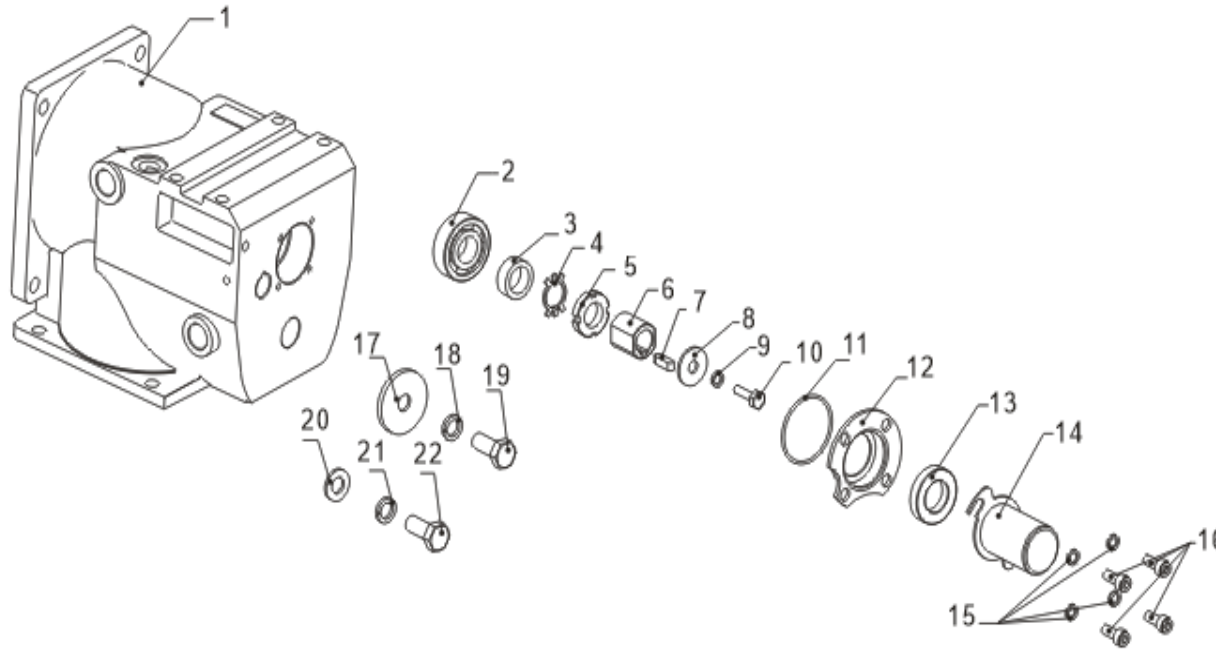
	REF.NO. 序号	PART NO 物料代码	DESCRIPTION 英文名	Q'TY 数量	包装数
033997	W02-1	24307-U090210-0000		1	1
033998	W02-2	24305-U180110-RT00		1	1
033999	W02-3	24308-U080110-0000		1	1
	W02-4	90403-0800-Z108	WASHER, FLAT	8	1
	W02-5	90102-0825-0108		8	1
	W02-6	90408-1000-E108	WASHER, FLAT	4	1
	W02-7	90403-1000-0108	WASHER, FLAT	4	1
	W02-8	90005-1040-0108		2	1
	W02-9	90005-1035-0108		2	1
034000	W02-10	24306-U090210-0000		1	1

<b>034001</b>	W02-11	90548-6007-CL	BEARING, DEEP GROOVE BALL	1	1
<b>034002</b>	W02-12	22000-U090111-0000	CLUTCH	1	1
<b>034003</b>	W02-13	90005-0816-0108		1	1
	W02-14	90403-0800-Z108	WASHER, FLAT	1	1
	W02-15	90406-0800-E108	WASHER, FLAT	1	1
	W02-16	90578-2503-0608		2	1
<b>034004</b>	W02-17	23501-U090110-0000	AXLE, MAIN	1	1
<b>034005</b>	W02-18	24524-U090110-0000		2	1
<b>034006</b>	W02-19	90543-6300-0008	BALL, STEEL	4	1
<b>034007</b>	W02-20	28301-U090410-0000	GEAR, DUPLICATE	1	1
<b>034008</b>	W02-21	90692-U090510-0000	O-RING RUBBER SEAL	2	1
	W02-22	90501-2525-0108	PIN	2	1
	W02-23	90307-1000-0108		1	1
	W02-24	90412-U090110-0000	WASHER, FLAT	3	1
	W02-25	90548-0202-CL	BEARING, DEEP GROOVE BALL	1	1
<b>034009</b>	W02-26	23609-U090110-0000		1	1
<b>034010</b>	W02-27	90521-U080110-0000		1	1
<b>034011</b>	W02-28	28301-U090410-0000	GEAR, DUPLICATE	1	1
<b>034012</b>	W02-29	90565-3301-00		2	1
	W02-31	90683-U090410-0000		1	1
<b>034013</b>	W02-32	90555-1104-00		1	1
<b>034014</b>	W02-33	23601-U090210-0000	COUNTERSHAFT	1	1
	W02-34	90505-0510-0008		2	1
	W02-35	90307-1200-0108	HEXAGON SLOTTED NUT	1	1
	W02-36	90408-1200-E108	WASHER, FLAT	1	1
	W02-37	23809-U080110-0000		1	1
	W02-38	23808-U080110-0000		1	1
	W02-39	90412-U090610-0000	WASHER, FLAT	1	1
<b>034015</b>	W02-40	28301-U090310-0000	GEAR, DUPLICATE	1	1
<b>034016</b>	W02-41	23807-U090110-0000		1	1
<b>034017</b>	W02-42	23806-U090110-0000		1	1
<b>034018</b>	W02-43	90692-U080610-0000	O-RING RUBBER SEAL	1	1



<b>034019</b>	W02-44	23401-U090110-0000		1	1
	W02-45	90504-0640-0108		1	1
	W02-46	90501-0220-0108	PIN	1	1
<b>034020</b>	W02-47	90692-U090410-0000	O-RING RUBBER SEAL	6	1
<b>034021</b>	W02-48	90683-U090110-0000		1	1
<b>034022</b>	W02-49	24420-U090210-0000	FORK SUBASSEMBLY, SHIFTS	1	1
<b>034023</b>	W02-50	24421-U090310-0000	FORK, SHIFTS	1	1
	W02-51	15010-U090110-G400	DIPSTICK SUBASSEMBLY, OIL	1	1
	W02-52	54037-U090410-0000		1	1
	W02-53	90001-0812-0108	BOLT	1	1
<b>034024</b>	W02-54	24421-U090110-0000	FORK, SHIFTS	1	1
	W02-55	90504-0630-0108		1	1
	W02-56	90501-0220-0108	PIN	1	1
<b>034025</b>	W02-57	24421-U090210-0000	FORK, SHIFTS	1	1
	W02-58	90683-U090210-0000		3	1
	W02-59	24420-U090310-0000	FORK SUBASSEMBLY, SHIFTS	1	1
	W02-60	90573-1600-0608		1	1
	W02-61	54037-U090510-0000		1	1
<b>034026</b>	W02-62	24420-U090110-0000	FORK SUBASSEMBLY, SHIFTS	1	1
	W02-63	90125-U090110-0000		1	1

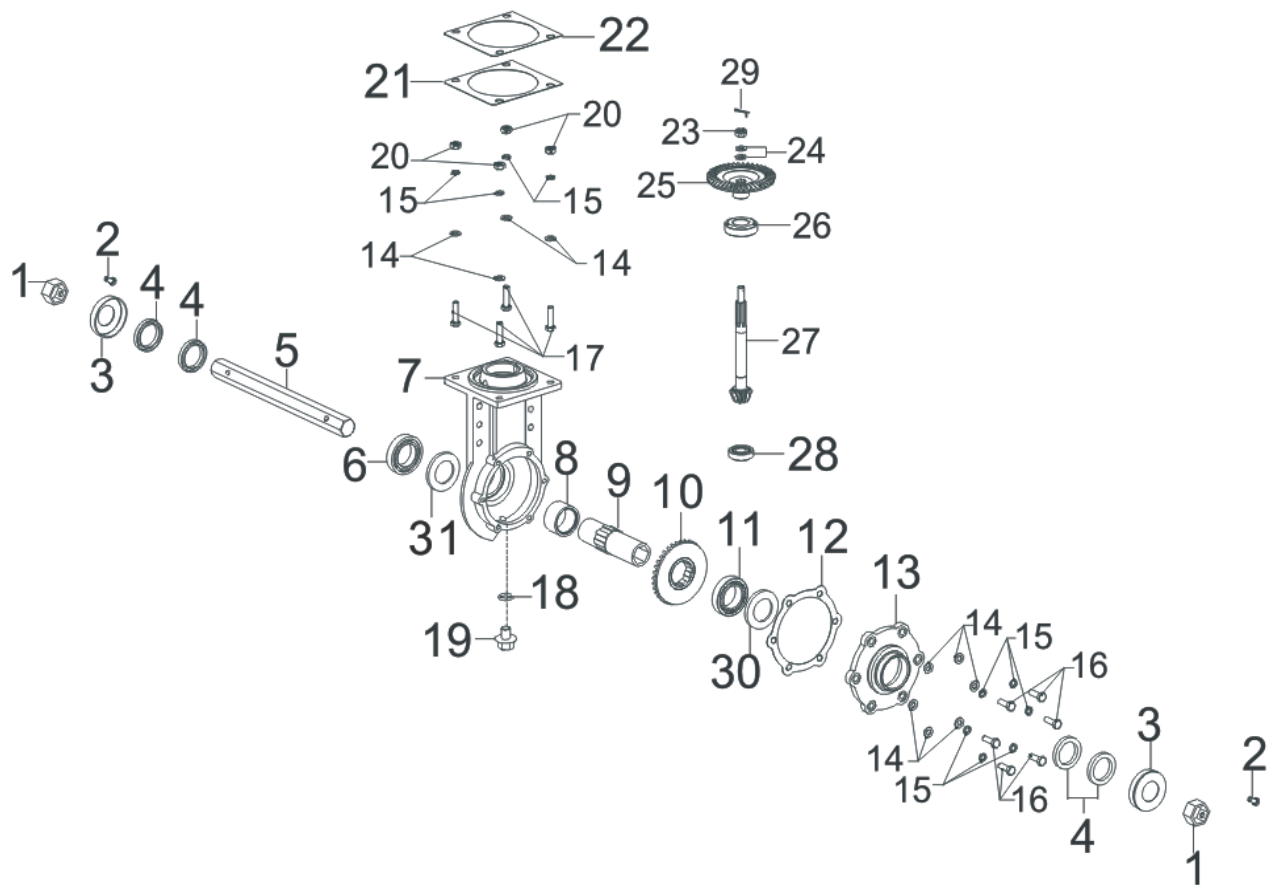
**FIG.17 箱体后 (W03)**



	REF.NO. 序号	PART NO 物料代码	DESCRIPTION 英文名	Q'TY 数量	包装数
034028	W03-1	76351-U090110-RT00	BOX BODY, TRANSMISSION	1	1
	W03-2	90548-0204-CL	BEARING, DEEP GROOVE BALL	1	1
	W03-3	90683-U090310-0000	BUSH	1	1
034029	W03-4	90422-2000-0608		1	1
034030	W03-5	90317-2000-0608		1	1
	W03-6	23515-U090110-0000		1	1
	W03-7	90521-U080110-0000	Flat key	1	1
	W03-8	90401-0800-D108		1	1
	W03-9	90403-0800-Z108	WASHER, FLAT	1	1
	W03-10	90005-0816-0108		1	1
034031	W03-11	90692-U090110-0000	O-RING RUBBER SEAL	1	1
034032	W03-12	23514-U090110-0000		1	1
	W03-13	90682-U090110-0000	SEAL, OIL	1	1

	W03-14	23513-U090110-0000		1	1
	W03-15	90403-0600-0108	WASHER, FLAT	4	1
	W03-16	90005-0616-0108		4	1
	W03-17	90412-U090810-0000	WASHER, FLAT	1	1
	W03-18	90403-1200-0108	WASHER, FLAT	1	1
	W03-19	90005-1225-0108		1	1
	W03-20	90408-1000-E108	WASHER, FLAT	1	1
	W03-21	90403-1000-0108	WASHER, FLAT	1	1
	W03-22	90005-1025-0108		1	1

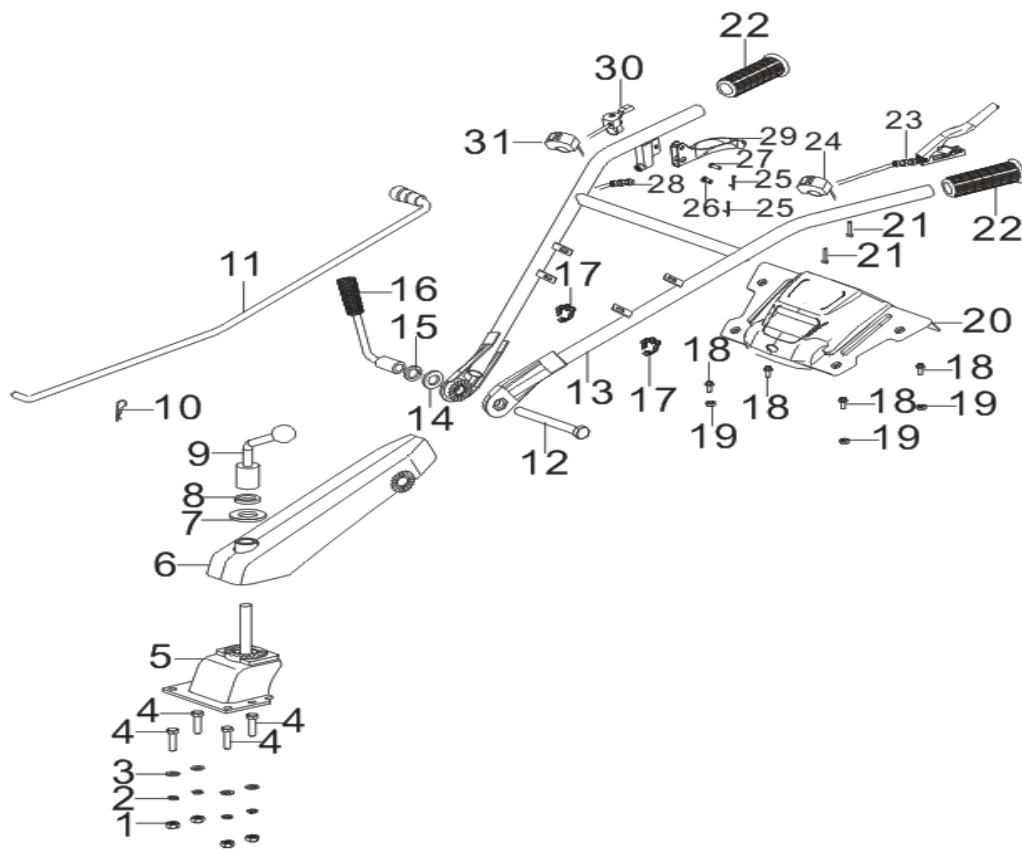
**FIG.18 行走箱 (W04)**



	REF.NO. 序号	PART NO 物料代码	DESCRIPTION 英文名	Q'TY 数量	包装数
034033	W04-1	76611-U090110-0000		2	1
	W04-2	90005-0816-0108		2	1
034034	W04-3	76322-U090110-0000	OUTPUT SHAFT DUSTPROOF COVER	2	1
034035	W04-4	90682-U090210-0000	SEAL, OIL	4	1
	W04-5	76315-U090110-0000	OUTPUT SHAFT	1	1
034036	W04-6	90548-0009-CL	BEARING, DEEP GROOVE BALL	1	1
034037	W04-7	76351-U090310-RT00	BOX BODY, TRANSMISSION	1	1

<b>034038</b>	W04-8	76609-U090110-0000		1	1
<b>034039</b>	W04-9	76608-U090110-0000		1	1
<b>034040</b>	W04-10	76605-U090110-0000	RUNNING GEAR	1	1
<b>034041</b>	W04-11	90552-2009-CL	TAPERED ROLLER BEARING	1	1
<b>034042</b>	W04-12	76602-U090110-0000	GASKET FOR RUNNING GEAR COVER	1	1
<b>034043</b>	W04-13	76301-U090110-RT00	COVER, TRANSMISSION BOX	1	1
	W04-14	90408-1000-E1	WASHER, FLAT	10	1
	W04-15	90403-1000-01	WASHER, FLAT	10	1
	W04-16	90005-1030-0608		6	1
	W04-17	90005-1040-01		4	1
	W04-18	90692-U080710-0000	O-RING RUBBER SEAL	1	1
	W04-19	11007-U080110-0000	BOLT, DRAIN PLUG	1	1
	W04-20	90303-1000-31	NUT	4	1
<b>034044</b>	W04-21	76606-U090110-0000	GASKET FOR WALKING ENCLOSURE	按需	1
	W04-22	76606-U090210-0000	GASKET FOR WALKING ENCLOSURE	按需	1
<b>034045</b>	W04-23	90334-U090110-0000		1	1
	W04-24	90408-1200-E1	WASHER, FLAT	2	1
<b>034046</b>	W04-25	76604-U090110-0000	FOLLOWER GEAR	1	1
<b>034047</b>	W04-26	90552-0206-CL	TAPERED ROLLER BEARING	1	1
<b>034048</b>	W04-27	76603-U090110-0000	GEAR SHAFT	1	1
	W04-28	90552-0204-CL	TAPERED ROLLER BEARING	1	1
	W04-29	90501-2525-01	PIN	1	1
<b>034049</b>	W04-30	90412-U090410-0000	WASHER, FLAT	按需	1
	W04-31	90412-U090510-0000	WASHER, FLAT	按需	1

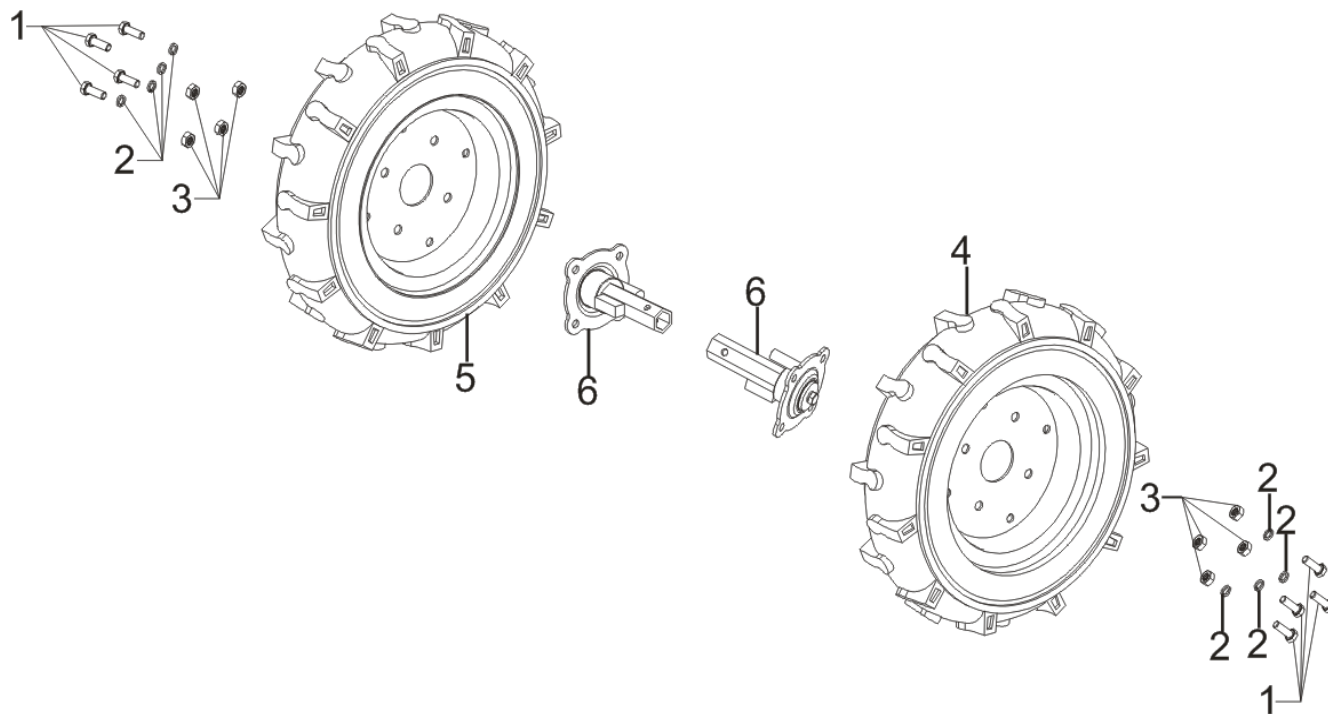
**FIG.19 扶手架部分 (W05)**



	REF.NO. 序号	PART NO 物料代码	DESCRIPTION 英文名	Q'TY 数量	包装数
	W05-1	90303-1000-3108	NUT	4	1
	W05-2	90403-1000-0108	WASHER, FLAT	4	1
	W05-3	90408-1000-E108	WASHER, FLAT	4	1
	W05-4	90005-1040-0108		4	1
034050	W05-5	54200-U090410-RT00	HANDLE BASE ASSY.	1	1
034051	W05-6	54200-U090310-RT00	HANDLE BASE ASSY.	1	1
	W05-7	90408-2000-E108	WASHER, FLAT	1	1

	W05-8	90403-2000-0108	WASHER, FLAT	1	1
<b>034052</b>	W05-9	54203-U090110-0000	LOCKING HANDLE	1	1
	W05-10	90583-0238-01	R PIN	1	1
	W05-11	54205-U090111-QC00	GEAR LEVER	1	1
<b>034053</b>	W05-12	90004-U070110-01		1	1
	W05-13	54110-U190110-GS00	HANDLE TUBE ASSY	1	1
	W05-14	90408-1600-E108	WASHER, FLAT	1	1
	W05-15	90403-1600-0108	WASHER, FLAT	1	1
<b>033924</b>	W05-16	54203-U080111-0000	LOCKING HANDLE	1	1
	W05-17	90684-U110111-0000	CLIP	2	1
	W05-18	90007-0616-A108	BOLT	4	1
	W05-19	90305-0600-3108	NUT	3	1
<b>033927</b>	W05-20	54125-U500210-Q200	PANEL	1	1
	W05-21	90007-0630-A108	BOLT	2	1
	W05-22	54101-U060110-0000	SLEEVE, HANDLE RUBBER	2	1
<b>034054</b>	W05-23	24510-U190210-0000		1	1
<b>034055</b>	W05-24	35540-U180110-0000	SWITCH SUBASSEMBLY, STOP ENGINE	1	1
	W05-25	90501-0220-0108		2	1
	W05-26	90504-U080110-0008	PIN ROLL	1	1
	W05-27	90504-0625-0108		1	1
<b>034056</b>	W05-28	24006-U190210-0000	REVERSE GEAR CABLE	1	1
<b>034057</b>	W05-29	54035-U070410-H300	HANDLE,IDLE CONTROL	1	1
<b>034058</b>	W05-30	16550-U190210-0000	THROTTLE SWITCH ASSEMBLE	1	1
<b>034059</b>	W05-31	35540-U190310-0000	SWITCH SUBASSEMBLY, STOP ENGINE	1	1

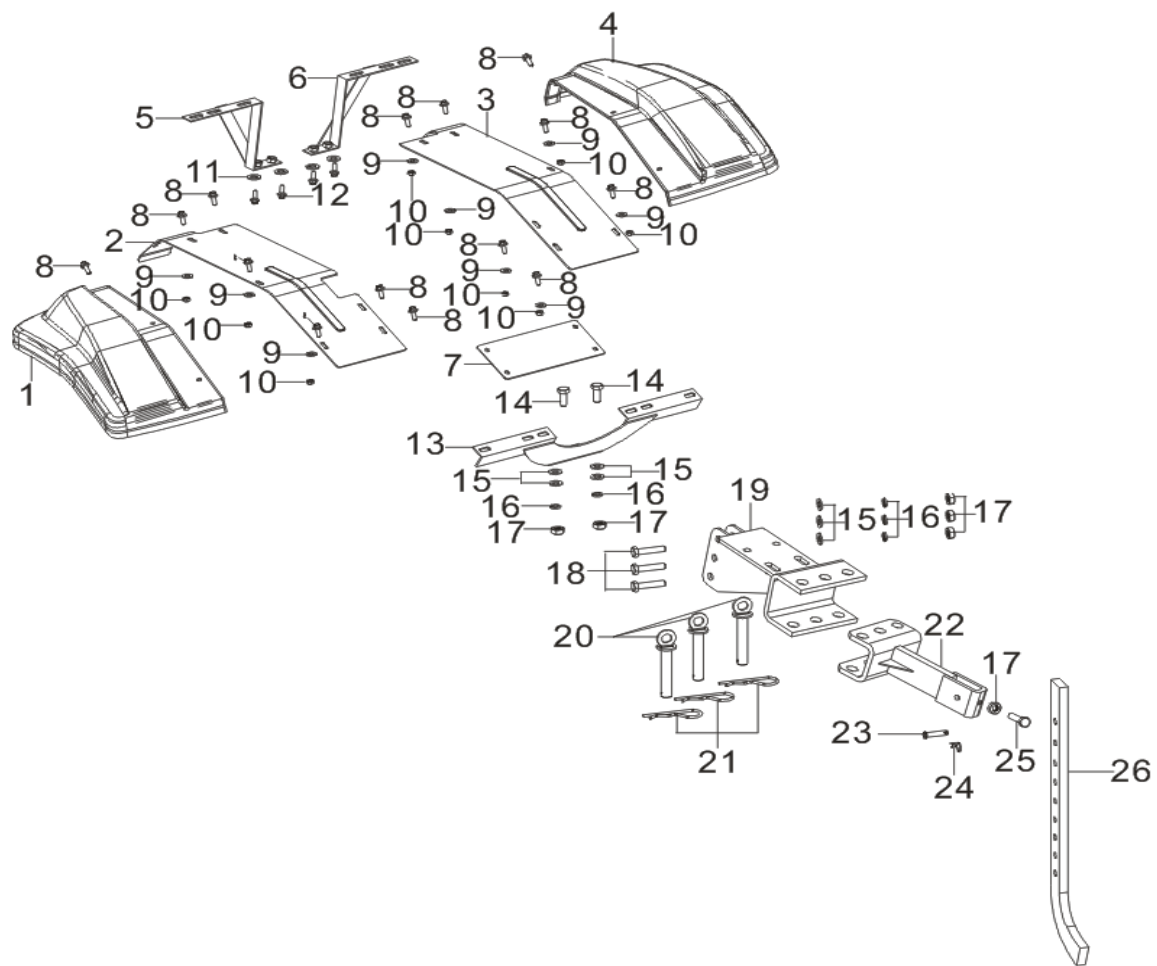
**FIG.20 后轮部分 (W06)**



	REF.NO. 序号	PART NO 物料代码	DESCRIPTION 英文名	Q'TY 数量	包装数
	W06-1	90005-1025-0108		8	1
	W06-2	90403-1000-0108	WASHER, FLAT	8	1
	W06-3	90303-1000-3108	NUT	8	1
	W06-4	76008-U090110-GS00	WHEEL, TRANSPORTION	1	1
	W06-5	76008-U090210-GS00	WHEEL, TRANSPORTION	1	1
	W06-6	42002-U090310-H300	SHAFT, REAR WHEEL	2	1

**FIG.21 挡泥板部分 (W07)**

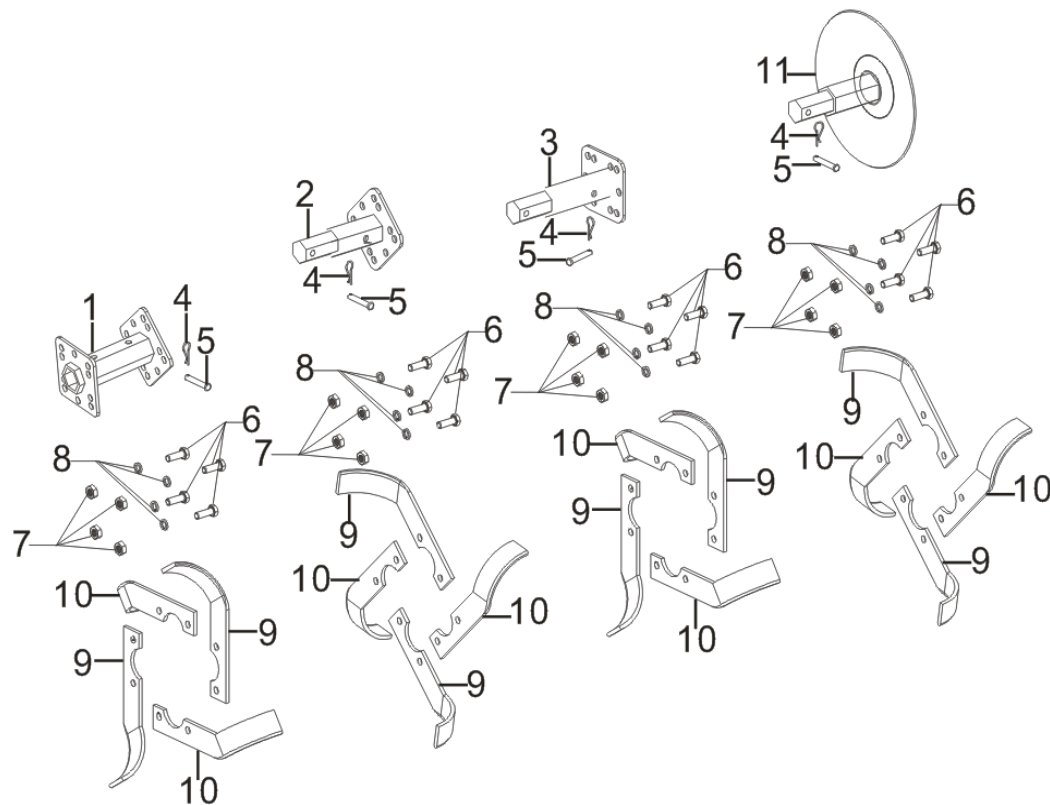




	REF.NO. 序号	PART NO 物料代码	DESCRIPTION 英文名	Q'TY 数量	包装数
	W07-1	76007-U060410-RT00	FENDER, MINI-TILLER	1	1
	W07-2	76007-U190110-RT00	FENDER, MINI-TILLER	1	1
	W07-3	76007-U550110-RT00	FENDER, MINI-TILLER	1	1
	W07-4	76007-U060510-RT00	FENDER, MINI-TILLER	1	1
	W07-5	80009-U190110-H300	SUPPORT, FRONT FENDER	1	1

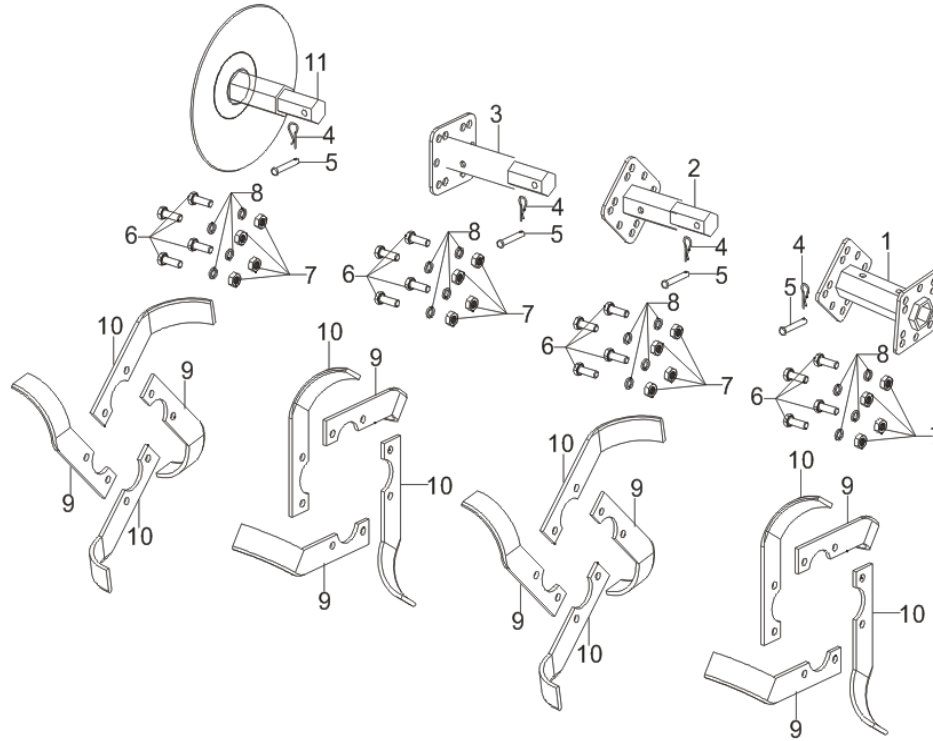
	W07-6	80009-U190210-H300	SUPPORT, FRONT FENDER	1	1
	W07-7	76007-U190310-RT00	FENDER, MINI-TILLER	1	1
	W07-8	90007-0616-A108	BOLT	14	1
	W07-9	90406-0600-E108		14	1
	W07-10	90325-0600-3108		14	1
	W07-11	90406-0800-E108	WASHER, FLAT	4	1
	W07-12	90001-0816-0108	BOLT	4	1
	W07-13	82002-U190110-H300	SUPPORT, REAR FENDER	1	1
	W07-14	90005-1025-0108		2	1
	W07-15	90408-1000-E108	WASHER, FLAT	4	1
	W07-16	90403-1000-0108	WASHER, FLAT	2	1
	W07-17	90303-1000-3108	NUT	6	1
	W07-18	90005-1050-0108		3	1
	W07-19	76025-U240210-H300		1	1
	W07-20	90504-U090210-0000	PIN ROLL	3	1
	W07-21	90583-3581-01	R PIN	3	1
	W07-22	76024-U240110-H300		1	1
	W07-23	90504-0840-0108		1	1
	W07-24	90583-0238-01	R PIN	1	1
	W07-25	90005-1035-0108		1	1
	W07-26	76016-U080110-H300	FRONT AND REAR BRACKET	1	1

**FIG.22 耕刀左 (W08)**



	REF.NO. 序号	PART NO 物料代码	DESCRIPTION 英文名	Q'TY 数量	包装数
	W08-1	76725-U500510-H300		1	1
	W08-2	76725-U500210-H300		1	1
	W08-3	76725-U500410-H300		1	1
	W08-4	90504-0850-0108	PIN ROLL	4	1
	W08-5	90583-0238-01	R PIN	4	1
	W08-6	90005-1030-0608		16	1
	W08-7	90303-1000-3608	NUT	16	1
	W08-8	90403-1000-0608	WASHER, FLAT	16	1
	W08-9	76721-U070310-H300		8	1
	W08-10	76721-U070410-H300		8	1
	W08-11	76723-U090110-H300		1	1

# FIG.23 耕刀右 (W09)



	REF.NO. 序号	PART NO 物料代码	DESCRIPTION 英文名	Q'TY 数量	包装数
	W09-1	76725-U500510-H300		1	1
	W09-2	76725-U500210-H300		1	1
	W09-3	76725-U500410-H300		1	1
	W09-4	90504-0850-0108	PIN ROLL	4	1
	W09-5	90583-0238-01	R PIN	4	1
	W09-6	90005-1030-0608		16	1
	W09-7	90303-1000-3608	NUT	16	1
	W09-8	90403-1000-0608	WASHER, FLAT	16	1
	W09-9	76721-U070310-H300		8	1
	W09-10	76721-U070410-H300		8	1

	W09-11	76723-U090110-H300		1	1
--	--------	--------------------	--	---	---