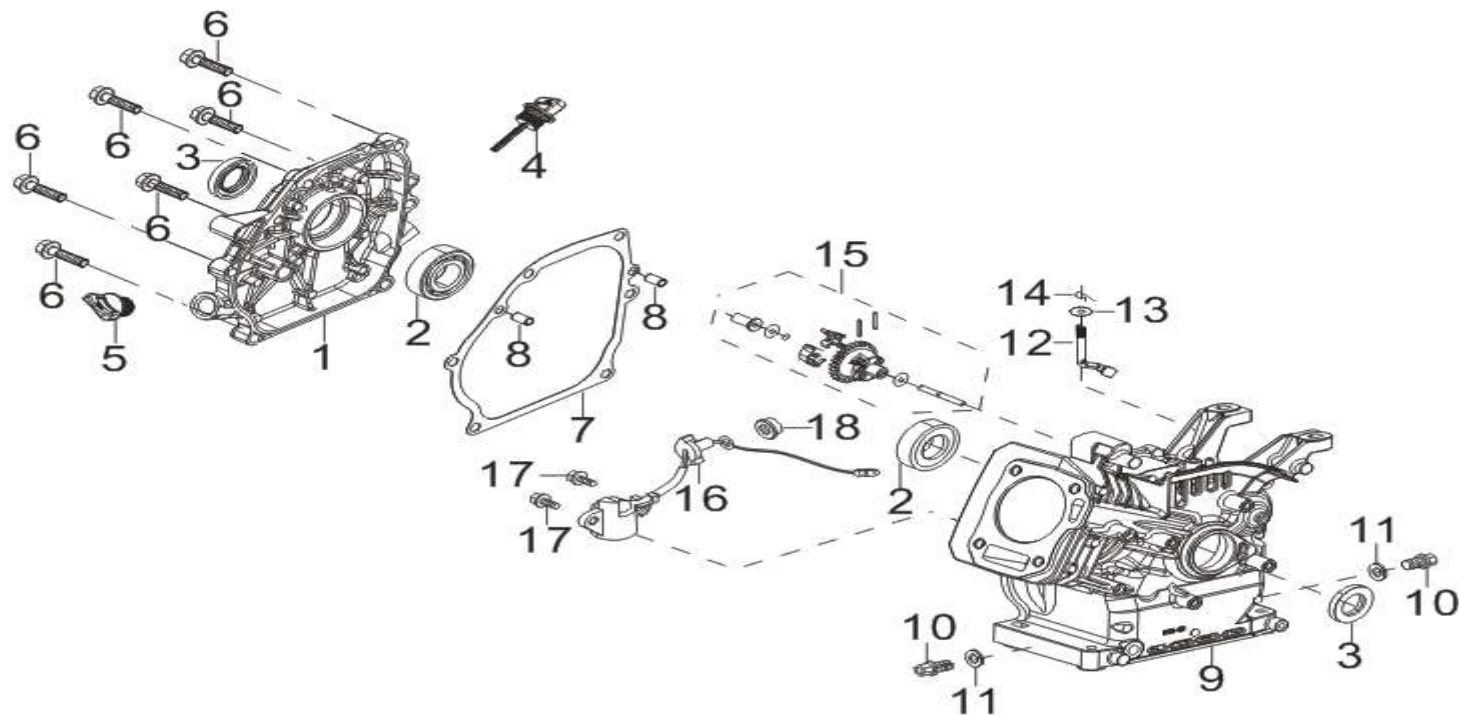


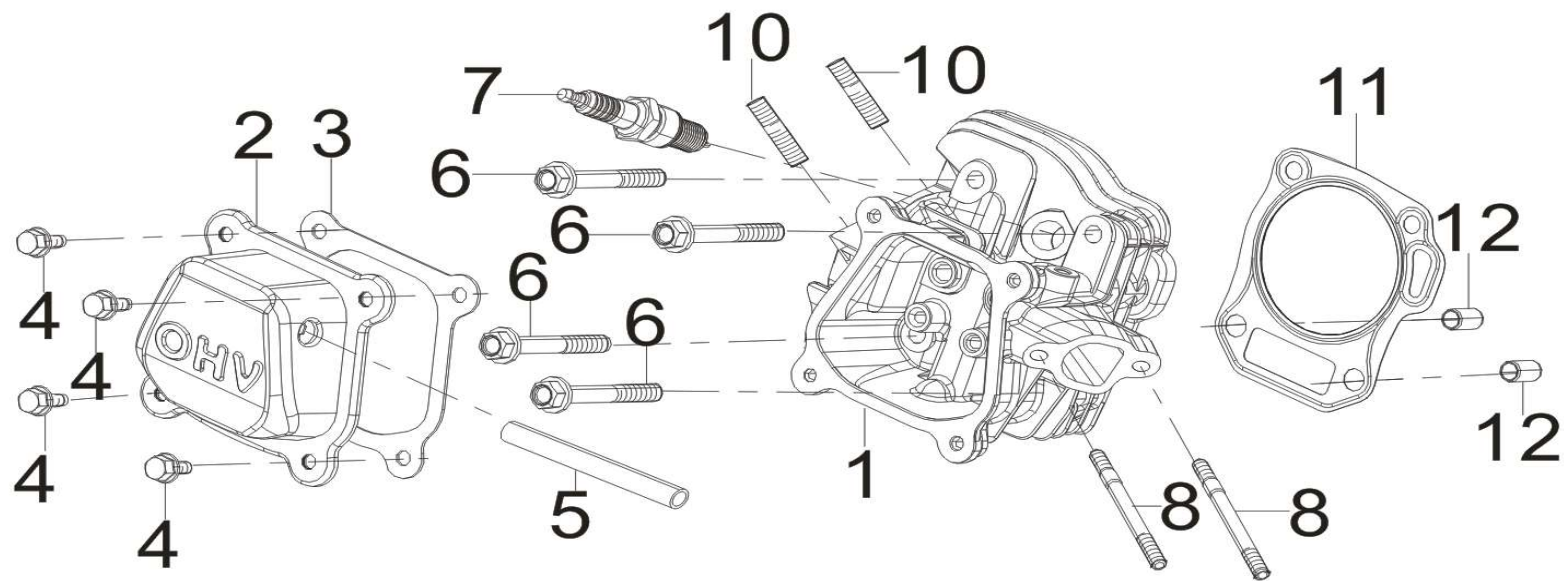
RG3.6-75Q-D-Ⅱ图册

FIG.1 CRANKCASE. / GEAR ASSY, GOVERNOR./COVER SUBASSEMBLY, CRA



COD PLU CH	REF.NO. 序号	PART NO 物料代码	DESCRIPTION 英文名	Q'TY 数量	包装数
033824	E01-1	11411-Z440310-00A0	COVER, CRANKCASE	1	1
	E01-2	90547-0205-CLA0	BEARING, DEEP GROOVE BALL	2	1
033825	E01-3	90682-Z300110-00A0	SEAL, OIL	2	1
	E01-4	15010-Z010130-Q5A0	DIPSTICK SUBASSEMBLY, OIL	1	1
	E01-5	15030-Z010130-Q5A0	PLUG SUBASSEMBLY, ENGINE OIL	1	1

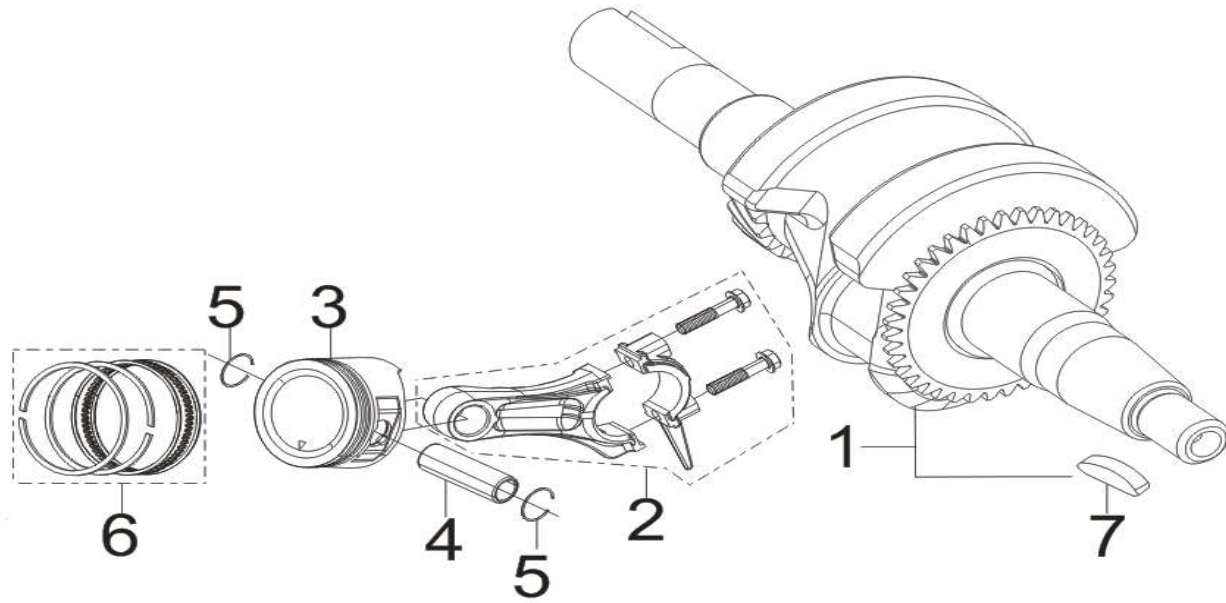
	E01-6	90001-0832-01A0	BOLT	6	1
033826	E01-7	11001-Z440110-00A0	GASKET, CRANKCASE	1	1
	E01-8	90502-0912-00A0	PIN	2	1
033827	E01-9	11310-Z530420-00A9	CRANKCASE SUBASSEMBLY.	1	1
	E01-10	11007-Z010110-00A0	BOLT, DRAIN PLUG	2	1
	E01-11	90408-Z010110-00A0	WASHER, FLAT	2	1
	E01-12	16061-Z010110-00A0	ARM, GOVERNOR	1	1
	E01-13	90408-Z010210-00A0	WASHER, FLAT	1	1
	E01-14	90501-Z010110-00A0	PIN	1	1
033828	E01-15	16400-Z010110-00A0	GEAR ASSY, GOVERNOR	1	1
	E01-16	37060-Z010120-00A0	SENSOR, ENGINE OIL	1	1
	E01-17	90001-0614-01A0	BOLT	2	1
	E01-18	90305-Z010210-01A0	NUT	1	1
	FIG.2 HEAD SUBASSEMBLY, CYLINDER / PLUG,SPARK 气缸头部件/火花塞 (E03				



	REF.NO. 序号	PART NO 物料代码	DESCRIPTION 英文名	Q'TY 数量	包装数
033829	E03-1	12140-Z810210-00A0	HEAD SUBASSEMBLY, CYLINDER	1	1
033830	E03-2	12410-Z300120-00A0	COVER SUBASSEMBLY, CYLINDER HEAD	1	1
033831	E03-3	12004-Z010110-00A0	GASKET, CYLINDER HEAD COVER	1	1
	E03-4	90001-0612-01A0	BOLT	4	1
	E03-5	17004-Z440110-00A0	TUBE, BREATHER	1	1
	E03-6	12003-Z010110-00A0	BOLT, CYLINDER HEAD	4	1
	E03-7	30010-Z010110-00A0	PLUG, SPARK	1	1

	E03-8	90204-Z010310-01A0	STUD	2	1
	E03-10	90203-Z010110-01A0	STUD	2	1
033832	E03-11	12131-Z950110-00A0	GASKET, CYLINDER HEAD	1	1
	E03-12	90502-1114-00A0	PIN	2	1

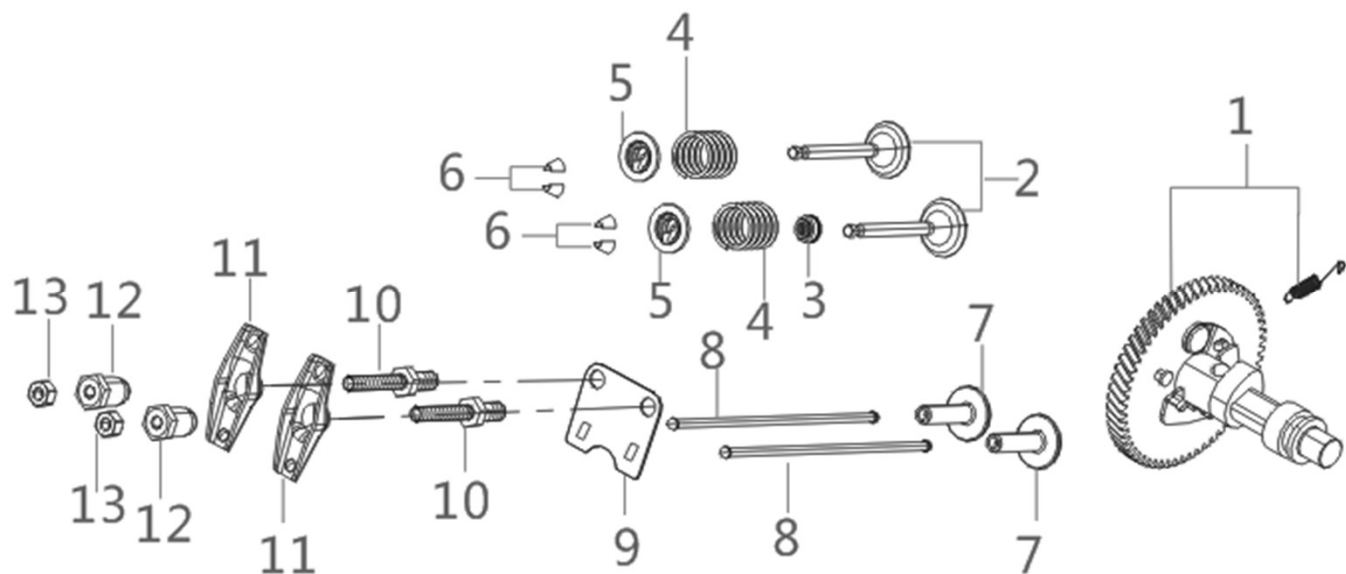
FIG.3 ROD,CRANKSHAFT CONNETING 曲柄连杆组件(E04)



	REF.NO. 序号	PART NO 物料代码	DESCRIPTION 英文名	Q'TY 数量	包装数
033833	E04-1	13300-Z533210-00A0	CRANKSHAFT ASSY.	1	1
033834	E04-2	13010-Z440210-00A9	ROD, CONNECTING	1	1

033835	E04-3	13111-Z140220-00A9	PISTON	1	1
033836	E04-4	13121-Z010110-00A0	PIN, PISTON	1	1
033837	E04-5	13122-Z010110-00A0	CLIP, PISTON PIN	2	1
033838	E04-6	13200-Z140210-00A9	RING ASSY, PISTON	1	1

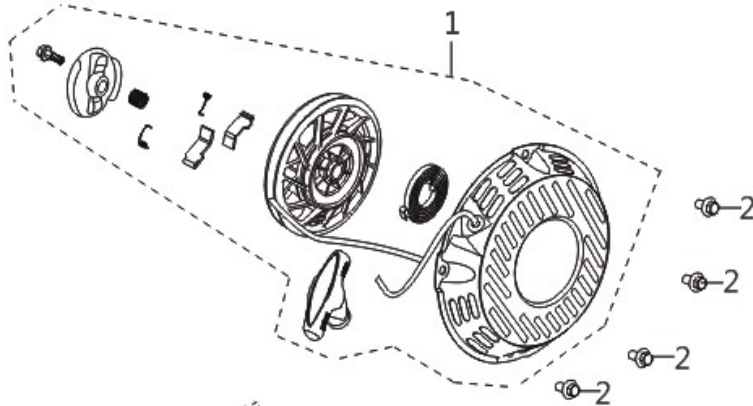
FIG.4 TRAIN,VALVE / CAMSHAFT SUBASSEMBLY 配气机构组件/凸轮轴



	REF.NO. 序号	PART NO 物料代码	DESCRIPTION 英文名	Q'TY 数量	包装数
033839	E06-1	14200-Z530210-00A9	CAMSHAFT ASSY.	1	1
033840	E06-2	12110-Z810120-00A9	VALVES SET	1	1
033841	E06-3	12101-Z810210-00A0	GUIDE, SEAL	2	1

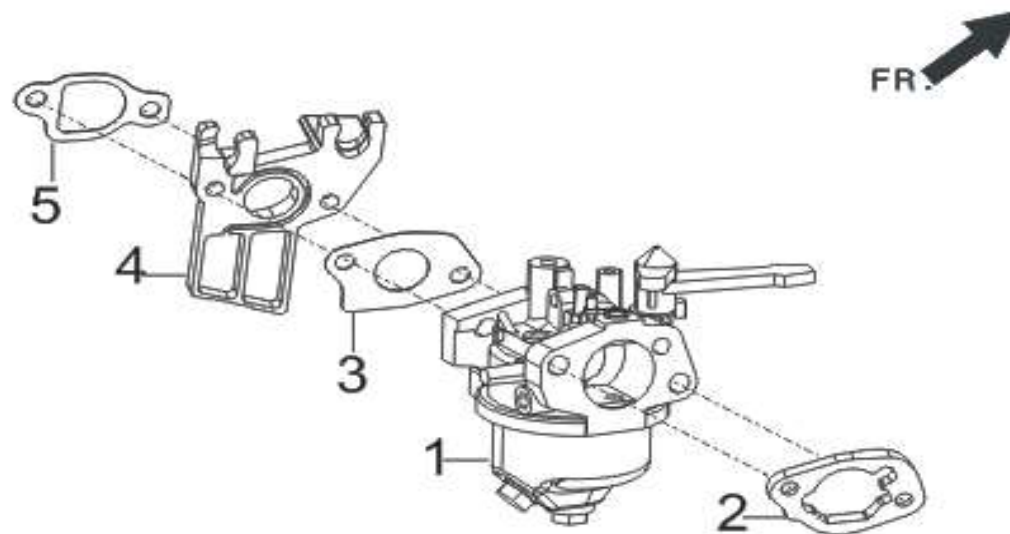
033842	E06-4	12103-Z010110-00A0	SPRING, VALVE	2	1
033843	E06-5	12112-Z810210-00A0	SEAT, VALVE SPRING	2	1
033844	E06-6	12109-Z810110-00A0	CLAMP, VALVE LOCK	4	1
033845	E06-7	14081-Z040110-00A0	TAPPET, VALVE	2	1
033846	E06-8	14071-Z440110-00A0	LIFTER, VALVE	2	1
033847	E06-9	14090-Z010110-00A0	PLATE SUBASSEMBLY, LIFTER STOPPER	1	1
033848	E06-10	14313-Z010110-00A0	BOLT, ROCKER SHAFT	2	1
033849	E06-11	14311-Z010110-00A0	ROCKER, VALVE	2	1
033850	E06-12	14314-Z010110-00A0	NUT, VALVE ADJUSTING	2	1
033851	E06-13	14312-Z010110-00A0	NUT, VALVE LOCK	2	1

FIG.5 STARTER,RECOIL 手起动组件 (E07)

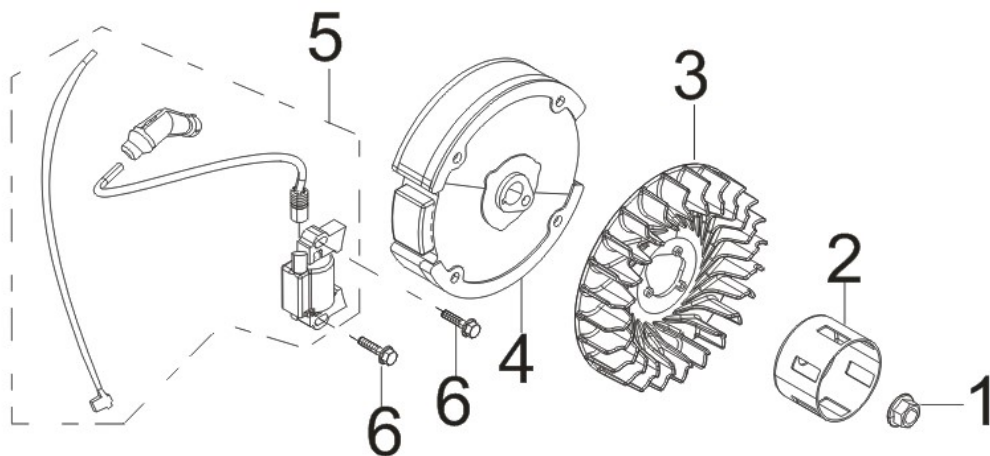


	REF.NO. 序号	PART NO 物料代码	DESCRIPTION 英文名	Q'TY 数量	包装数
033852	E07-2	28200-Z140110-RT00	STARTER ASSY, RECOIL	1	1

	E07-4	90001-0608-01A0	BOLT	3	1
FIG.6 SHROUD / SHIELD,LOWER 缸体导风罩/下护罩 (E08)					
	REF.NO. 序号	PART NO 物料代码	DESCRIPTION 英文名	Q'TY 数量	包装数
033853	E07-1	28110-Z010410-RT00	SHROUD	1	1
	E07-2	90001-0612-01A0	BOLT	4	1
	E07-3	19304-Z010710-00A0	SHROUD, CYLINDER BODY	1	1
	E07-4	90001-0610-01A0	BOLT	3	1
	E07-5	19340-Z010810-00A0	SHIELD,LOWER	1	1
	E07-6	90001-0616-01A0	BOLT	1	1
029954	E07-7	37050-Z010210-00A0	PROTECTOR, OIL	1	1
	E07-8	35555-Z010410-00A0	WIRE, STOP ENGINE SWITCH GROUNDING	1	1
	E07-9	90740-Z010110-00A0	COLLAR	1	1
FIG.7 CARBURETOR ASSY. 化油器部件 (E09)					

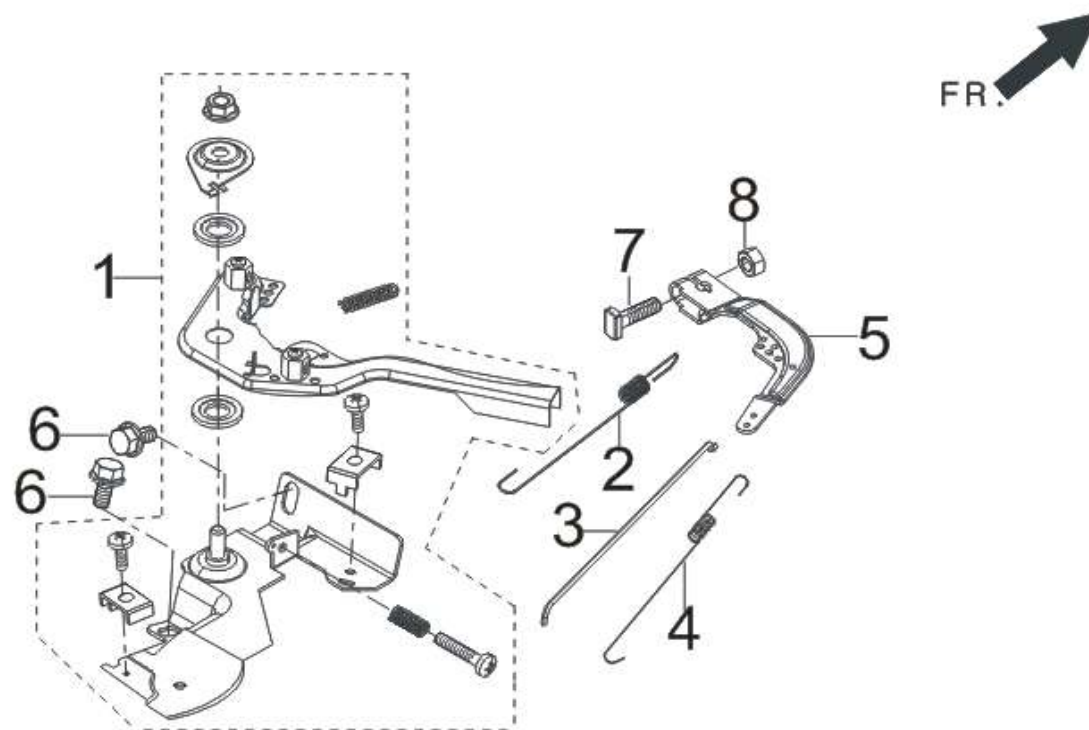


	REF.NO. 序号	PART NO 物料代码	DESCRIPTION 英文名	Q'TY 数量	包装数
033854	E09-1	16100-Z531410-00A0	CARBURETOR ASSY.	1	1
033855	E09-2	17001-Z010210-00A0	GASKET, AIR CLEANER	1	1
029919	E09-3	16001-Z010110-00A0	GASKET, CARBURETOR	1	1
029920	E09-4	16003-Z010110-00A0	PLATE, CARBURETOR INSULATOR	1	1
033856	E09-5	16002-Z010110-00A0	GASKET, CARBURETOR INSULATOR	1	1
FIG.8 FLYWHEEL / IMPELLER / STARTER PULLEY / IGNITION COIL					



	REF.NO. 序号	PART NO 物料代码	DESCRIPTION 英文名	Q'TY 数量	包装数
	E10-1	13501-Z010110-00A0	NUT, FLYWHEEL	1	1
029922	E10-2	28002-Z010310-00A0	PULLEY, STARTER	1	1
029923	E10-3	19352-Z440110-00A0	IMPELLER	1	1
033858	E10-4	13510-Z440410-00A0	FLYWHEEL SUBASSEMBLY	1	1
033859	E10-5	30400-Z440210-00A0	COIL, IGNITION	1	1
	E10-6	90001-0625-01A0	BOLT	2	1

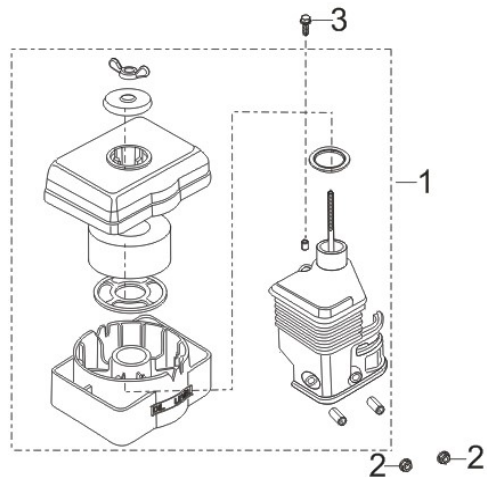
FIG.9 CONTROL ASSY, THROTTLE 油门操纵部件 (E11)



	REF.NO. 序号	PART NO 物料代码	DESCRIPTION 英文名	Q'TY 数量	包装数
033860	E11-1	16520-Z011710-00A0	CONTROL ASSY, THROTTLE	1	1
033861	E11-2	16063-Z010720-00A0	SPRING, GOVERNOR	1	1
033862	E11-3	16062-Z010110-00A0	ROD, GOVERNEOR	1	1
029927	E11-4	16012-Z010110-00A0	SPRING, THROTTLE VALVE RETURNING	1	1
033863	E11-5	16070-Z010110-00A0	SUPPORT SUBASSEMBLY, GOVERNOR	1	1

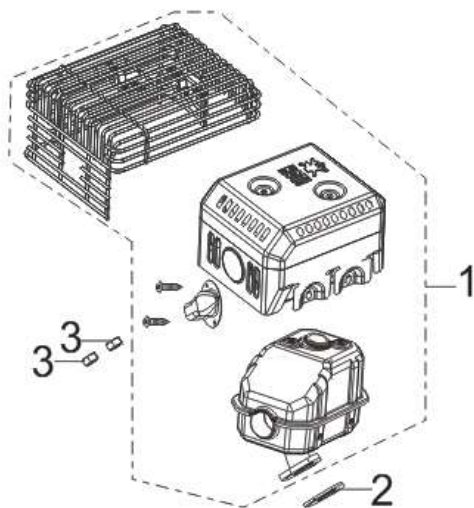
	E11-6	90001-0610-01A0	BOLT	2	1
	E11-7	16072-Z010110-00A0	BOLT, GOVERNOR SUPPORT	1	1
	E11-8	90305-0600-31A0	NUT	1	1

FIG.10 CLEANER, AIR 空滤器 (F01)

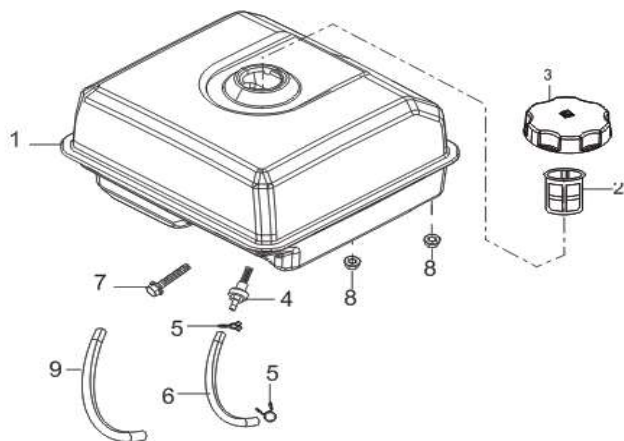


	REF.NO. 序号	PART NO 物料代码	DESCRIPTION 英文名	Q'TY 数量	包装数
033864	F01-1	17100-Z010410-00A0	CLEANER, AIR	1	1
	F01-2	90305-0600-31A0	NUT	2	1
	F01-3	90007-0620-A1A0	BOLT	1	1

FIG.11 MUFFLER ASSY. 消声器部件 (F02)

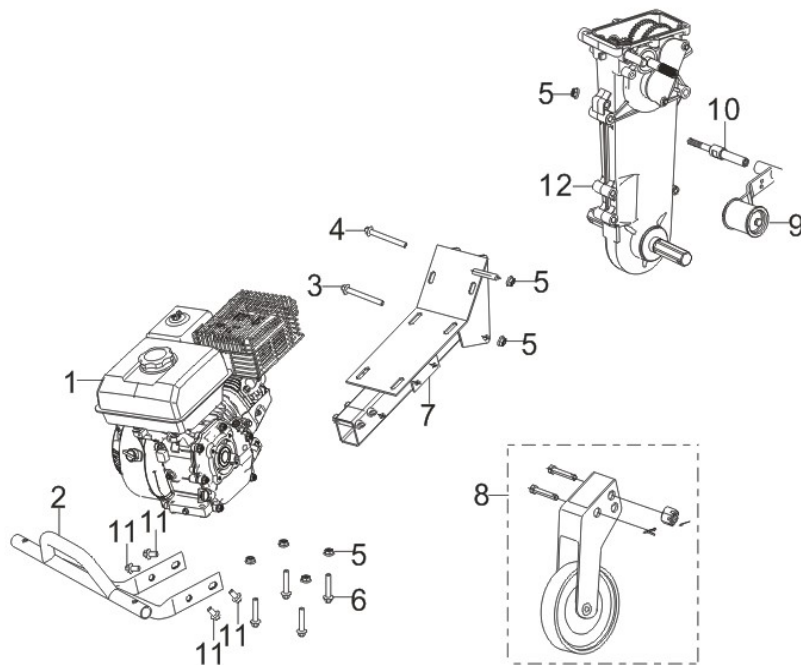


	REF.NO. 序号	PART NO 物料代码	DESCRIPTION 英文名	Q'TY 数量	包装数
033865	F02-1	18100-Z441810-H3A0	MUFFLER ASSY.	1	1
	F02-2	18001-Z440110-00A0	GASKET, EXHAUST OUTLET	1	1
	F02-3	90303-0800-31A0	NUT	2	1
FIG.12 TANK ASSY, FUEL 油箱部件 (F03)					



	REF.NO. 序号	PART NO 物料代码	DESCRIPTION 英文名	Q'TY 数量	包装数
033867	F03-1	16620-Z440120-RTA0	TANK, FUEL	1	1
033868	F03-2	16652-Z010610-00A0	STRAINER, FUEL	1	1
033869	F03-3	16730-Z010820-QBA0	COVER, FUEL TANK	1	1
033870	F03-4	16680-Z010110-00A0	OUTLET SUBASSEMBLY, FUEL TANK OIL	1	1
033871	F03-5	90740-Z010210-00A0	COLLAR	2	1
033872	F03-6	90686-Z010510-00A0	TUBE, FUEL	1	1
	F03-7	90001-0630-01A0	BOLT	1	1
	F03-8	90305-0600-31A0	NUT	2	1
	F03-9	30431-Z010110-00A0	JACKET, RUBBER	1	1

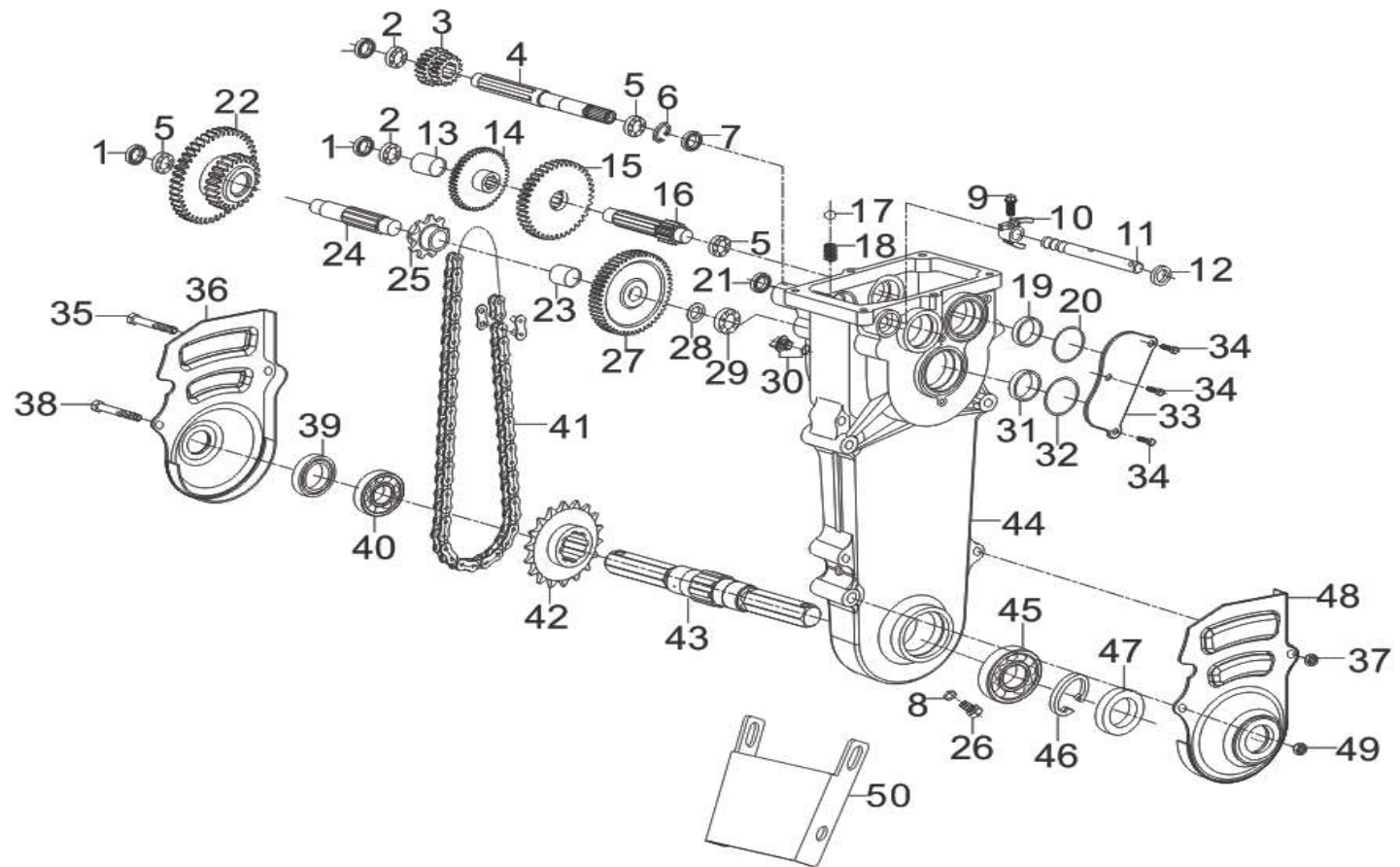
FIG.13 发动机固定部分 (W01)



	REF.NO. 序号	PART NO 物料代码	DESCRIPTION 英文名	Q'TY 数量	包装数
	W01-1	R210MR000W6-RKT304	ENGINE	1	1
	W01-2	58410-U300110-H300	GUARD	1	1
	W01-3	90001-0870-0108	BOLT	1	1
	W01-4	90001-0865-0108	BOLT	1	1
	W01-5	90305-Z010110-0008	NUT	7	1
	W01-6	90001-0840-0108	BOLT	4	1
033873	W01-7	76006-U070110-H300	SEAT, ENGINE CONNETING	1	1
033874	W01-8	44100-U070210-H302	WHEEL ASSY, FRONT	1	1

033875	W01-9	76307-U070110-0000	BELT TENSION PULLEY	1	1
033876	W01-10	76216-U070110-0000	IDLER SHAFT	1	1
	W01-11	90001-0816-0108	BOLT	4	1
033877	W01-12	76350-U070510-0000	BOX SUBASSEMBLY, TRANSMISSION	1	1

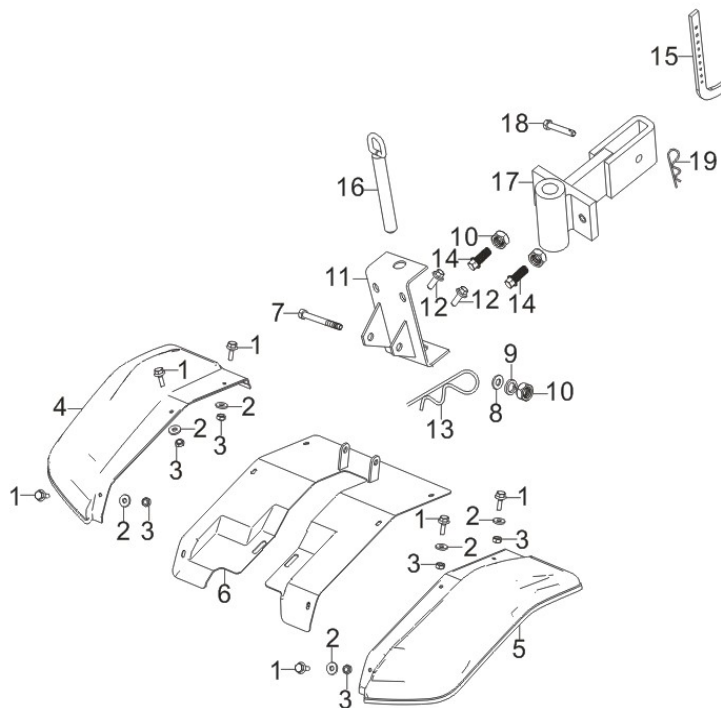
FIG.14 变速箱部分 (W02)



	REF.NO. 序号	PART NO 物料代码	DESCRIPTION 英文名	Q'TY 数量	包装数
033878	W02-1	28101-U070110-0000	PLUG, RUBBER	3	1
	W02-2	90548-0002-CL	BEARIN, DEEP GROOVE BALL	2	1
	W02-3	28301-U070110-0000	GEAR, DUPLICATE	1	1
	W02-4	23501-U070310-0000	MAINSHAFT	1	1
033879	W02-5	90548-0202-CL	BEARIN, DEEP GROOVE BALL	3	1
	W02-6	90571-3500-06	CIRCLIP FOR HOLE	1	1
	W02-7	90682-U070110-0000	SEAL, OIL	1	1
	W02-8	90408-Z010110-0000	WASHER, FLAT	1	1
033880	W02-9	90001-0616-01	BOLT	1	1
033882	W02-10	24421-U070110-0000	FORK, SHIFTS	1	1
033883	W02-11	24422-U070210-0000	AXIS, SHIFTS FORK	1	1
033884	W02-12	90682-U070410-0000	SEAL, OIL	1	1
033885	W02-13	90683-U070610-0000	BUSH	1	1
033886	W02-14	23611-U070120-0000	GEAR 1ST, COUNTERSHAFT	1	1
033887	W02-15	23621-U070210-0000	GEAR 2ND, COUNTERSHAFT	1	1
033888	W02-16	23601-U070110-0000	COUNTERSHAFT	1	1
033889	W02-17	90543-6300-00	BALL, STEEL	1	1
033890	W02-18	24524-U070110-0000	SPRING, STOPPER	1	1
033891	W02-19	90683-U070210-0000	BUSH	1	1
033892	W02-20	90692-U070110-0000	O-RING RUBBER SEAL	1	1
033893	W02-21	28101-U070210-0000	PLUG, RUBBER	1	1
033894	W02-22	28301-U070310-0000	GEAR, DUPLICATE	1	1
033895	W02-23	90683-U070310-0000	BUSH	1	1
033896	W02-24	40201-U070110-0000	DRIVE SHAFT	1	1
033897	W02-25	42011-U070110-0000	SPROCKET, WHEEL	1	1
033898	W02-26	11007-Z450110-0000	BOLT, DRAIN PLUG	1	1

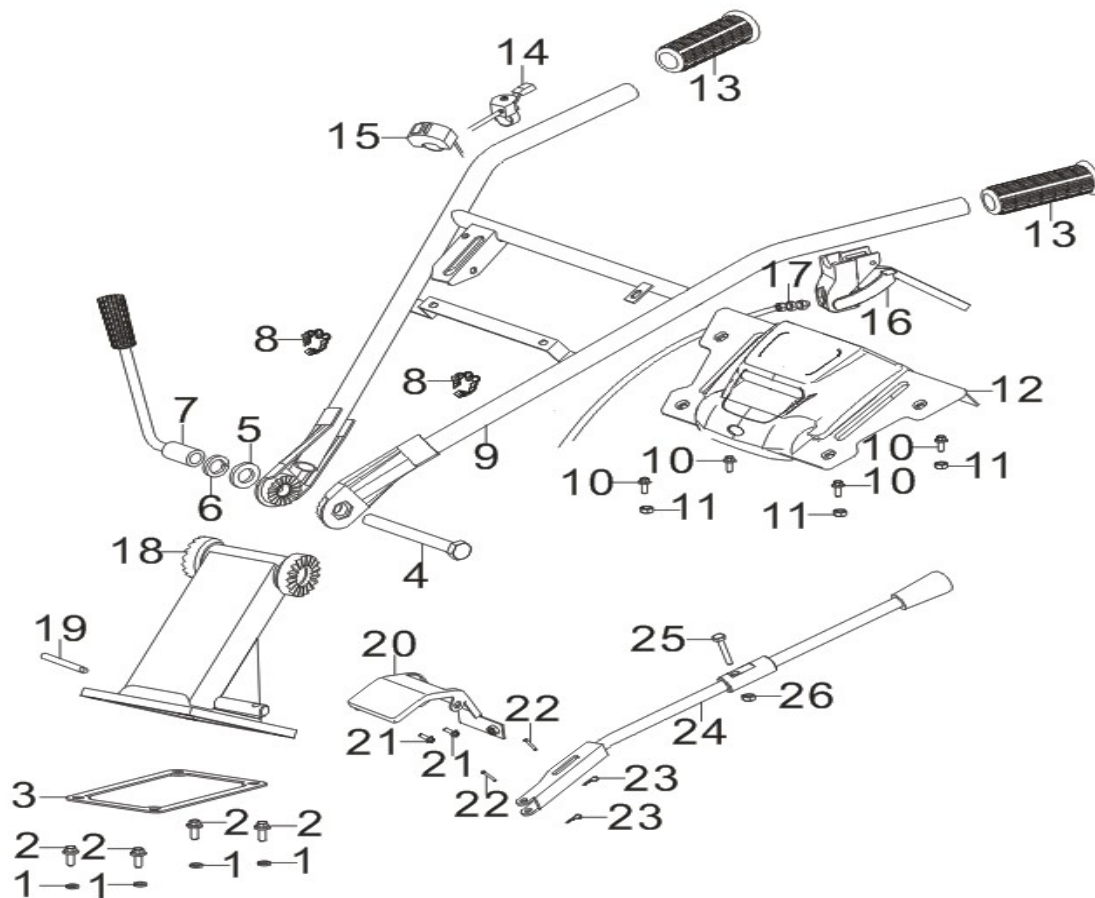
033899	W02-27	23711-U070110-0000	GEAR, INTERMEDIATE	1	1
033900	W02-28	90412-U070110-0000	WASHER, FLAT	按需	1
		90412-U070110-0000	WASHER, FLAT		1
		90412-U070110-0000	WASHER, FLAT		1
033901	W02-29	90548-0203-CL	BEARIN, DEEP GROOVE BALL	1	1
033903	W02-30	15030-U070110-G400	PLUG SUBASSEMBLY, ENGINE OIL	1	1
033904	W02-31	90683-U070410-0000	BUSH	1	1
033905	W02-32	90692-U070210-0000	O-RING RUBBER SEAL	1	1
033906	W02-33	12441-U070110-0000	SEAL, GUIDE	1	1
	W02-34	90001-0612-01	BOLT	3	1
	W02-35	90001-0650-01	BOLT	1	1
033907	W02-36	50115-U070210-WB00	PROTECTING PLATE	1	1
	W02-37	90305-0600-31	NUT	1	1
	W02-38	90001-0860-01	BOLT	1	1
033908	W02-39	90682-U070210-0000	SEAL, OIL	1	1
033909	W02-40	90548-0005-CL	BEARIN, DEEP GROOVE BALL	1	1
033910	W02-41	90710-U070110-0000	CHAIN	1	1
033911	W02-42	42011-U070210-0000	SPROCKET, WHEEL	1	1
033912	W02-43	76315-U070110-0000	OUTPUT SHAFT	1	1
033913	W02-44	76351-U070110-0000	BOX BODY, TRANSMISSION	1	1
033914	W02-45	90548-0205-CL	BEARIN, DEEP GROOVE BALL	1	1
	W02-46	90571-5200-06	CIRCLIP FOR HOLE	1	1
033915	W02-47	90682-U070310-0000	SEAL, OIL	1	1
033916	W02-48	50115-U070110-WB00	PROTECTING PLATE	1	1
	W02-49	90305-0800-31	NUT	1	1
	W02-50	50115-U070310-WB00		1	1
FIG.15 皮带传动部分 (W03)					

033920	W03-9	76306-U070310-H600	BELT COVER	1	1
	W03-10	90007-0616-A108	BOLT	4	1
	W03-11	76215-U070310-0000	TENSIONING BLOCK	1	1
	W03-12	76215-U070410-0000	TENSIONING BLOCK	1	1
	W03-13	90401-0600-0108	WASHER, FLAT	1	1
	W03-14	51143-U070310-WB00	PLATE, BOTTOM	1	1
033921	W03-15	76215-U070110-0000	TENSIONING BLOCK	1	1
033922	W03-16	76215-U070210-0000	TENSIONING BLOCK	1	1
	W03-17	90521-Z340110-0000	Flat key	1	1
033923	W03-18	76305-U070810-0000	BELT PULLEY	1	1
	W03-19	90406-0800-E108	WASHER, FLAT	1	1
	W03-20	90001-U070310-A108	BOLT	1	1
FIG.16 挡泥板部分 (W04)					



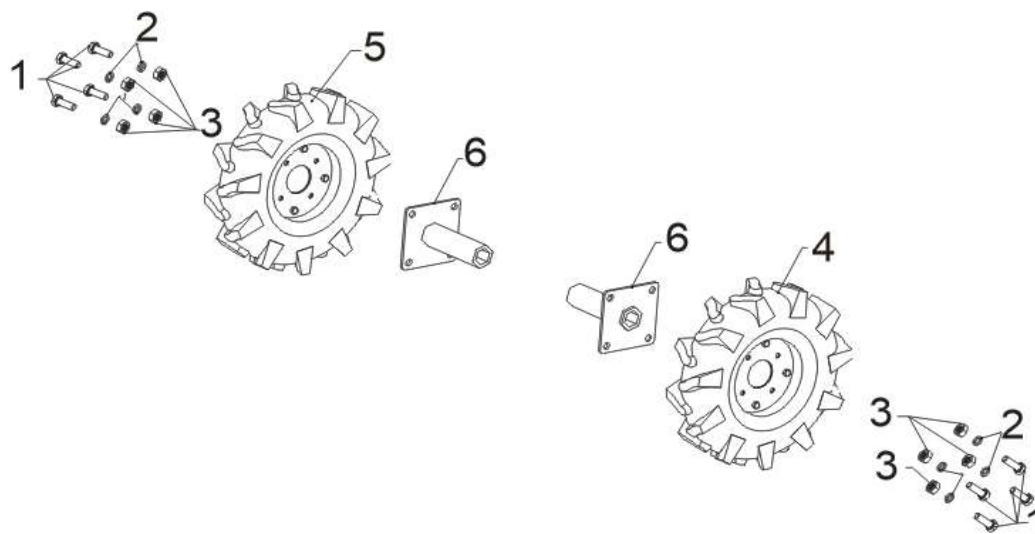
	REF.NO. 序号	PART NO 物料代码	DESCRIPTION 英文名	Q'TY 数量	包装数
	W04-1	90007-0616-A108	BOLT	6	1
	W04-2	90406-0600-E108	#N/A	6	1
	W04-3	90325-0600-3108	NON-METALLIC HEX LOCK BOLT	6	1
	W04-4	76007-U060510-RT00	FENDER, MINI-TILLER	1	1
	W04-5	76007-U060410-RT00	FENDER, MINI-TILLER	1	1
	W04-6	76007-U070620-RT00	FENDER, MINI-TILLER	1	1
	W04-7	90004-1095-0108	HEX BOLT	1	1
	W04-8	90408-1000-E108	WASHER, FLAT	1	1

	W04-9	90403-1000-0108	WASHER, FLAT	1	1
	W04-10	90303-1000-3108	NUT	3	1
	W04-11	76025-U070110-H300	TRAILER RING	1	1
	W04-12	90004-1095-0108	HEX BOLT	2	1
	W04-13	90583-3581-01	R -PIN	1	1
	W04-14	90005-1050-0108	HEX BOLT	2	1
	W04-15	76016-U080110-H300	FRONT AND REAR BRACKET	1	1
	W04-16	90504-U070410-0000	PIN ROLL	1	1
	W04-17	76024-U070210-H300	CONNECTOR	1	1
	W04-18	90504-0840-0108	PIN ROLL	1	1
	W04-19	90583-0238-01	R -PIN	1	1
	FIG.17 扶手架部分 (W05)				



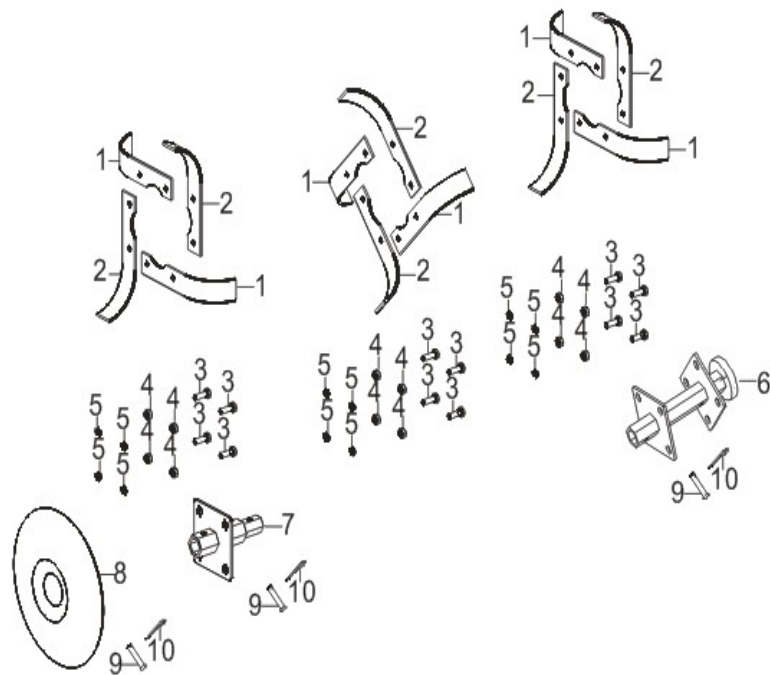
REF.NO. 序号	PART NO 物料代码	DESCRIPTION 英文名	Q'TY 数量	包装数
W05-1	90403-0800-Z108	WASHER, FLAT	4	1

	W05-2	90001-0820-0108	BOLT	4	1
033925	W05-3	11062-U070210-0000	GASKET, TRANSMISSION BOX COVER	1	1
033926	W05-4	90004-U080110-01	HEX BOLT	1	1
	W05-5	90408-1600-E108	WASHER, FLAT	1	1
	W05-6	90403-1600-0108	WASHER, FLAT	1	1
033924	W05-7	54203-U080111-0000	LOCKING HANDLE	1	1
	W05-8	90684-U110111-0000	CLIP	2	1
	W05-9	54110-U370110-GS00	HANDLE TUBE ASSY	1	1
	W05-10	90007-0616-A108	BOLT	4	1
	W05-11	90305-0600-3108	NUT	3	1
033927	W05-12	54125-U500210-Q200	PANEL	1	1
	W05-13	54101-U060110-0000	SLEEVE, HANDLE RUBBER	2	1
033928	W05-14	16550-U520210-0000	THROTTLE SWITCH ASSEMBLE	1	1
033929	W05-15	35540-U520110-0000	SWITCH SUBASSEMBLY, STOP ENGINE	1	1
033930	W05-16	54035-U240110-0000	HANDLE,IDLE CONTROL	1	1
033931	W05-17	54020-U520111-0000	CABLE, CLUTCH	1	1
	W05-18	54200-U290110-GS00	HANDLE BASE ASSY.	1	1
	W05-19	90684-Y730110-0000	CLIP	1	1
	W05-20	54204-U070110-H300	BRACKET	1	1
	W05-21	90007-0610-A108	BOLT	2	1
	W05-22	90504-U070210-0000	PIN ROLL	2	1
	W05-23	90583-0125-01	R -PIN	2	1
033932	W05-24	54205-U070110-H300	GEAR LEVER	1	1
	W05-25	90005-0625-0108	HEX BOLT	1	1
	W05-26	90325-0600-3108	NON-METALLIC HEX LOCK BOLT	1	1
FIG.18 车轮部分 (W06)					



REF.NO. 序号	PART NO 物料代码	DESCRIPTION 英文名	Q'TY 数量	包装数
W06-1	90005-1025-0108	BOLT	8	1
W06-2	90403-1000-0608	WASHER, FLAT	8	1
W06-3	90303-1000-3108	NUT	8	1
W06-4	76008-U070210-WK00	WHEEL, TRANSPORTION	1	1
W06-5	76008-U070310-WK00	WHEEL, TRANSPORTION	1	1
W06-6	42002-U220210-H300	SHAFT, REAR WHEEL	2	1

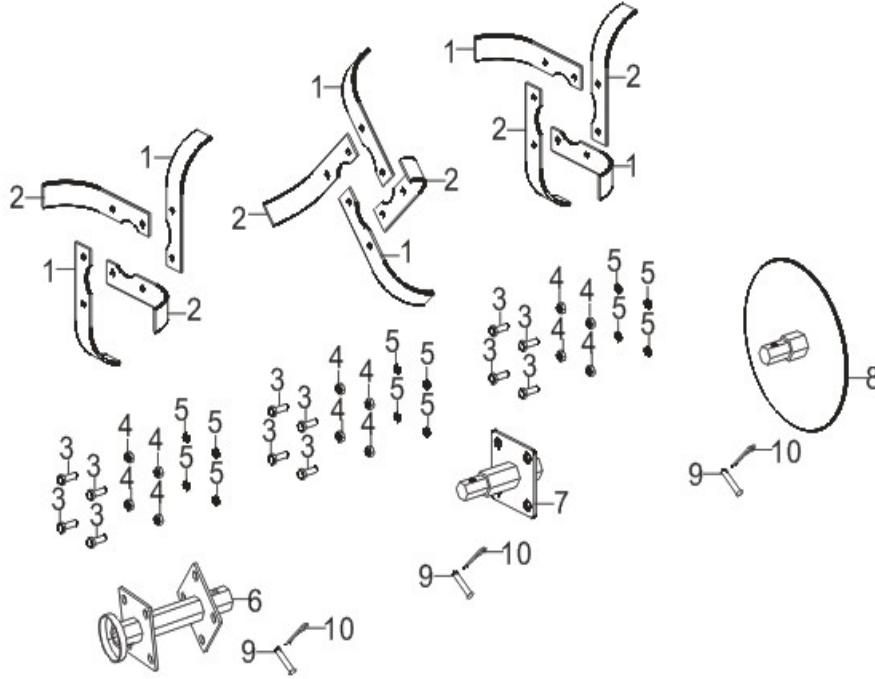
FIG.19 右耕刀 (W07)



	REF.NO. 序号	PART NO 物料代码	DESCRIPTION 英文名	Q'TY 数量	包装数
	W07-1	76721-U070310-H300		6	1
	W07-2	76721-U070410-H300		6	1
	W07-3	90005-1030-0608	BOLT	12	1
	W07-4	90403-1000-0608	WASHER, FLAT	12	1
	W07-5	90303-1000-3608	NUT	12	1
	W07-6	76725-U070810-H300		1	1
	W07-7	76725-U070410-H300		1	1
	W07-8	76723-U070310-H300		2	1

	W07-9	90504-0840-0108	PIN ROLL	3	1
	W07-10	90583-0238-01	R -PIN	3	1

FIG.20 左耕刀 (W08)



	REF.NO. 序号	PART NO 物料代码	DESCRIPTION 英文名	Q'TY 数量	包装数
	W08-1	76721-U070310-H300		6	1
	W08-2	76721-U070410-H300		6	1
	W08-3	90005-1030-0608	BOLT	12	1
	W08-4	90403-1000-0608	WASHER, FLAT	12	1
	W08-5	90303-1000-3608	NUT	12	1

	W08-6	76725-U070810-H300		1	1
	W08-7	76725-U070410-H300		1	1
	W08-8	76723-U070310-H300		2	1
	W08-9	90504-0840-0108	PIN ROLL	3	1
	W08-10	90583-0238-01	R -PIN	3	1